



AUCTION

WORLD RENOWNED MANUFACTURER OF CHAIN CONVEYOR SYSTEMS

FEATURING: Fabricating Machinery, Machine Shop Equipment, Large Assortment of Field Installation Tools, Material Handling Equipment, Large Selection of New Steel Materials, Forklifts, and Much, Much More



AIRGAS/MACHITECH SILVER CUT HIGH-DEFINITION PLASMA CUTTER AND HYPERTHERM POWER SUPPLY



ACCUSHEAR 10' X 3/8" HYDRAULIC SHEAR

INSPECTION: Tuesday & Wednesday, May 17 & 18, 9:00 A.M. to 4:00 P.M.



MILLER MARK VIII-2 MULTI-PACK WELDERS



HUGE ASSORTMENT OF UNUSED STEEL

Assets Located at
ALLIED UNIKING CORPORATION
4750 CROMWELL AVENUE
MEMPHIS, TENNESSEE 38118



(1 OF 2) GEKA HYDRACROP MDL. 80/A HYDRAULIC IRONWORKERS

WIDE SELECTION OF H.D. JOBSITE TOOLBOXES

2 AVAILABLE



**THURSDAY
MAY 19
10:00 A.M.
LIVE ONLINE WEBCAST
(NO ONSITE BIDDING)**

FOR BIDDING AT THIS AUCTION Go to www.pmi-auction.com and click on BidSpotter or proxibid on our calendar page for this auction sale.

**18% BUYER'S PREMIUM
WILL APPLY**

Read Partial Terms
& Conditions on Back Page

Sale Conducted By:

PLANT & MACHINERY INC.
AUCTIONEERS • APPRAISERS • LIQUIDATORS • REAL ESTATE

Ron Moore • TN Lic. # 4831

HOUSTON • DALLAS • ST. LOUIS

Headquarters:
1304 Langham Creek Drive, Suite 454
Houston, Texas 77084

PHONE: (713) 691-4401

FAX: (713) 672-7905

**E-MAIL: pmi@pmi-auction.com
WEBSITE: www.pmi-auction.com**

AUCTION

Assets Located at
ALLIED UNIKING CORPORATION
 4750 CROMWELL AVE.,
 MEMPHIS, TN 38118



AIRGAS/MACHITECH SILVER CUT HD HIGH-DEFINITION PLASMA CUTTER



HYPERTHERM XPR170 HIGH DEFINITION PLASMA POWER SUPPLY



ACCUSHEAR 10' X 3/8" HYDRAULIC SHEAR



VERSION 200 T. CAP. MECHANICAL PRESSBRAKE

HIGH-DEFINITION PLASMA CUTTER

AIRGAS/MACHITECH SILVER CUT HD 5" X 10", new 2021, 1,000 IPM traverse spd., 0–500 IPM cutting spds., .003" positioning accuracy, integrated convertible dry/wet table, auto. torch ht. control w/magnetic break-away, Hypertherm XPR170 high definition plasma pwr. supply, Hypertherm EDGE Connect CNC controls, ProNest 2021 software, quick change oxy/fuel torch, assorted accessories, S/N 67735 (new, still mtd. to factory skid and never installed in the facility).

HYDRAULIC SHEARS

ACCUSHEAR 10' X 3/8" MDL. B8375010, front operated pwr. backgauge w/indicator, 24" L.H. squaring arm, custom fabricated ballfield entry, scrap bucket, S/N 254.

CINCINNATI 10' X 5/8" MDL. 5FL10, front operated pwr. backgauge w/indicator, custom fabricated ballfield entry, S/N 35280.

MECHANICAL PRESSBRAKES

VERSION 200 T. CAP. MDL. B910-200/M.P.B., 14' overall, 10'5" dist. btwn. housings, 4" stroke, 12" shut ht., 6" adj., air counterbalance, elec. trip clutch, 2' L.H. horn, manual backgauge, Versomatic clutch, drilled for angles, S/N 21563.

DRIES & KRUMP CHICAGO 150 T. CAP., 12' overall, 8'5" dist. btwn. housings, floor standing, unipunch lower die rail, S/N N.A.

HUGE ASSORTMENT OF PRESSBRAKE PUNCHES AND DIES, sorted in racks; **LARGE ASSORTMENT OF UNIPUNCH TOOLING**, several large T-slotted plates.

HYDRAULIC IRONWORKERS

SCOTCHMAN 120 T. CAP. MDL. 12012, 1-1/2" in 1" punch capacity, 12" throat depth, 1/2" x 24" flat shear, 5 HP, S/N 50409M793.

(2) GEKA HYDRACROP MDL. 80/A, 5-1/2" x 5-1/2" x 1/2" angle cutting cap., 18" x 5/8" flat shear, 1-3/4" rd. shear, mtd. to skid base, dual operator stations, S/N 6496, S/N 7053.

SCOTCHMAN MDL. FI-60/130, 4" x 4" x 1/2" angle shear, 14" x 1/2" flat shear, 1-3/8" rd. shear, coper notcher, 5 HP, S/N 217M495.

MECHANICAL IRONWORKERS

MUBEA MDL. KBL900, 90 tons, 1.5" rd. bar shear, notcher, selection of punches and dies, S/N 000135180681320.

(6) MUBEA MDL. KBL50-4 OPTIMA, 4 x 4 x 3/8" angle shear, 1-3/4" rd. bar shear, 6" x 9/16" flat plate shear, assortment of punches and dies, on roller stand, S/N 131A/44355F/27 S/N 131A/44366F/27, S/N 131A/36371AF/24, S/N 131A/44370F/28, S/N 131A/44359F/27, S/N 131A/44360F/27.

VERTICAL ANGLE BENDING ROLL

BUFFALO NO. 2VBR, wide selection of interchangeable bending dies for channel, pipe and assorted structural steel, S/N 64Z-9710.

INITIAL PINCH PLATE ROLL

HENDLEY & WHITEMORE, 44"L. rolls, 6" roll dia., outboard angle roll attach., 5 HP brake motor drive, skid mtd. w/safety treadle, S/N R15717.

**THURSDAY
MAY 19
10:00 A.M.
LIVE
ONLINE
WEBCAST
(NO ONSITE
BIDDING)**



(1 OF 2) GEKA HYDRACROP MDL. 80/A HYDRAULIC IRONWORKERS

SCOTCHMAN 120 T. CAP. HYDRAULIC IRONWORKER



HUGE ASSORTMENT OF PRESSBRAKE PUNCHES AND DIES

**2
AVAILABLE**



MUBEA MDL. KBL900 MECHANICAL IRONWORKERS



SCOTCHMAN 120 T. CAP. HYDRAULIC IRONWORKER



(1 OF 3) W.F. WELLS MDL. F15 HORIZONTAL BANDSAWS

3 AVAILABLE

HORIZONTAL BANDSAWS

(3) W.F. WELLS MDL. F15, 1" blade size, variable spd. drive system, hyd. vise, 10' infeed conveyor, S/N 801480, S/N 761025, S/N 76105.

WELLSAW MDL. 613, 3/4" blade size, fabricated forklift entry skid, S/N 1729.

WILTON 7" MDL. 3575, forklift entry skid, S/N 9081287.

VERTICAL BANDSAWS

MARVEL SERIES 81A TILT FRAME, hyd. auto. feed, outboard vise arrangement, H.D. 10-spd. infeed conveyor, S/N D1385.

(3) ROLL-IN, wheeled base, S/N 94189EF, S/N 92132EF, S/N 94019EF.

SCOTCHMAN ROLLING FRAME GLIDE-IN, 7-1/2 HP motor, fabricated steel base, S/N 1105M487.

POWERMATIC MDL. 87, S/N 7887305.

CIRCULAR SAWS

EVERETT MDL. 14-16 ABRASIVE CUT-OFF SAW, 7-1/2 HP motor, fabricated forklift entry base, S/N 0-2787.

KALAMAZOO INDUSTRIES 20" MDL. K20SSF ABRASIVE CUT-OFF SAW, 15 HP motor, forklift entry, S/N 1299008.

SCOTCHMAN BEWO 12" MDL. 350-LT METAL CUTTING CHOP SAW, swivel base, S/N N.A.

ENGINE LATHES

SUMMIT 20" X 80" MDL. 19-4X80, 4" spd. hole, taper attach., steadyrest, quickchange toolpost, 12" dia. 3-jaw and 16" dia. 4-jaw chucks, 2-axis D.R.O., S/N 5391.

SUMMIT MDL. 20X4-60, 6-pos. bed turret, tailstock, steadyrest, 12" dia. 3-jaw chuck, 4-1/8" spd. hole, spds. to 1,500 RPM, S/N 4169.

MILLING MACHINES

LAGUN MDL. FTV2 VERTICAL TURRET, variable spd. head, long. pwr. feed.

(2) WELLS INDEX MDL. 847 VERTICAL TURRET, 9" x 46-1/2" tbl., pwr. drawbar, long. pwr. feeds, S/N 20346, S/N N.A. w/D.R.O..

MILTRONICS PARTNER CNC VERTICAL MILL, Centurion 1 control.

KEARNEY & TRECKER MILWAUKEE MDL. 2K HORIZONTAL, right angle head, S/N 3-2821.

CLEVELAND NO. 2 MDL. 2U HORIZONTAL, 12" x 55" tbl., swivel vert. head, S/N 2075.

HYDRAULIC KEYSEATER

MITTS & MERRILL MDL. 2HYDKS, nice compliment of tooling, S/N KM647.



SUMMIT 20" X 80" MDL. 19-4X80 ENGINE LATHE



MARVEL SERIES 81A TILT FRAME VERTICAL BANDSAW



BUFFALO NO. 2 VBR VERTICAL ANGLE BENDING ROLL



MITTS & MERRILL MDL. 2HYDKS HYDRAULIC KEYSEATER



CUSTOM APPROX. 80 T. CAP. HYDRAULIC BULLDOZER



FABRILINE APPROX. 6" X 6" X 1/2" HYDRAULIC ANGLE SHEAR



SAMPLE VIEW OF BENCH TOP POSITIONERS



TENNSMITH 5' X 14 GA. MDL. HBU60 FINGERBRAKE



MILLER DELTAWELD 300 MIG WELDERS

6 AVAILABLE

MISCELLANEOUS FABRICATING EQUIPMENT

CUSTOM BUILT APPROX. 80 T. CAP. HYDRAULIC BULLDOZER, heavy fabricated steel construction, 30" x 66" steel tbl., 4" hyd. ram dia., assorted banding dies.

KLING HORIZONTAL MECHANICAL BULLDOZER, S/N 2033.

TENNSMITH 5' X 14 GA. MDL. HBU60 FINGERBRAKE, fabricated forklift skid, S/N 17118.

TENNSMITH 52" X 16 GA. MDL. T52/16 FOOT SHEAR, backgauge, welded forklift frame, S/N 18809.

FABRILINE APPROX. 6" X 6" X 1/2" HYDRAULIC ANGLE SHEAR, dbl. cut shear end, 5' roller infeed conveyor, 10' outfeed conveyor, independent unitized hyd. supply, S/N N.A.

CUSTOM APPROX. 50 T. CAP. H-FRAME PRESS, 2-1/2" ram dia., 14" ram stroke, adj. ht. bed, unitized hyd. system, foot pedal control.

LINDE OPTICAL BURNING MACHINE, Linde Mdl. HL7 Linatrol head, (4) oxy. fuel cutting heads, dry cutting bench.

ROPER WHITNEY MAGNABEND MDL. MBB4181 ELECTRIC BENDER, S/N 17102; **PITTSBURGH MDL. 31980 COMPACT BAR AND ROD BENDER**; **TENNSMITH 16 GA. MDL. SN HAND ANGLE SHEAR**, S/N 17118; **POWERMATIC MDL. 30B COMBINATION BELT/DISC SANDER**, cabinet base, tilt tbl., S/N 7930734; **HELLER HYDRAULIC FLANGE PUNCH** w/stand and unitized hyd. system; **HYDRAULIC FLANGE PUNCHES** up to 13/16" cap., assorted punches, in case; **BEVERLY THROATLESS SHEAR**; **BEVERLY 12" CONTINUOUS THROATLESS SHEAR**.

DON'T MISS THIS SALE

DRILLS

PROFITMASTER 4' X 11" MDL. 1020 RADIAL ARM, w/box tbl., S/N ZQ3035.

MECOF 3' X 9" RADIAL ARM.

UNKNOWN MFG. GEARED HEAD DRILL, No. 4 MT spdl., adj. ht. tbl..

WILTON TYPE 24503 GEARED HEAD DRILL, spds.: 85-1,460 RPM, adj. ht. tbl., custom fabricated forklift entry base, S/N 51251.

MIG WELDERS

LINDE VI400, 400 amps, fixed MIG torch, rotating tbl..

(6) MILLER DELTAWELD 300, 300 amps @ 32 v., 100% duty cycle, Mdl. 21V constant spd. wire feeder and welding boom, S/N KE708021, S/N KE668160, S/N KE708025, S/N KE668162, S/N KE708020, S/N KE668161 - (pwr. supply only).

MILLER CP300, Millermatic 30A wire feeder.

(3) LINDE VI-252, 250 amps @ 37 v., 100% duty cycle, Linde wire feed unit and welding boom.

(6) LINDE VI252 WELDING POWER SOURCES, 250 amps @ 37 v., 100% duty cycle.

(5) LINDE VI-253, 250 amps @ 35 v., 100% duty cycle, Linde wire feed and boom.

LINDE V205, Linde wire feeder.

MILLER CP200, Millermatic S54A wire feeder.



SAMPLE VIEW OF PORTABLE PUNCH UNITS



PROFITMASTER 4' X 11" RADIAL DRILL



**MILLER MARK VIII-2
MULTI-PACK WELDERS**



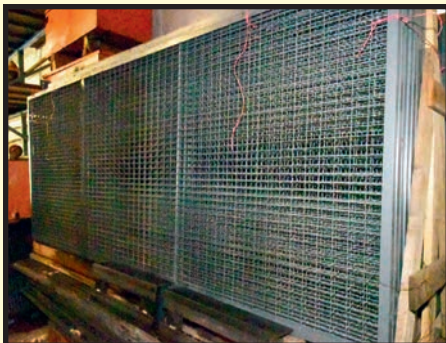
**SAMPLE VIEW OF
PORTABLE WELDERS**



SAMPLE VIEW OF REMOTE ELECTRIFICATION SYSTEMS



SAMPLE VIEW OF FABRICATING EQUIPMENT



**SAMPLE VIEW OF
10'L. X 48" WIRE
CAGE PANELS**

MULTI-PACK WELDERS

(2) MILLER MARK VIII-2, 200 amps @ 40 v., 60% duty cycle modules – (8) modules per unit, S/N KE602862, S/N KG226463.

ARC WELDERS

(34) LINCOLN IDEALARC 250 AC/DC WELDING POWER SOURCES, 250 amps @ 30% v., 30% duty cycle, on running gear.

PORTABLE WELDERS

(2) LINCOLN RANGER 8, 225 amps AC @ 25 v., 100% duty cycle, S/N U1940217942 (gasoline pwrld.), S/N U1940501401 (LG pwrld.).

(3) MILLER BOBCAT 225NT, LG pwrld., Onan Performer 16 engine, 225 amps, 8,000 watt generator, S/N KG274063 (1,805 H.O.M.), S/N KK004035 (951 H.O.M.), S/N KJ219317 (1,468 H.O.M.).

LINCOLN WELDPANPOWER, 225 amps @ 25 v., 100% duty cycle, mtd. to fabricated steel frame, gasoline pwrld., S/N A1007484.

WELDING ACCESSORIES

ESAB PLASMARC TYPE PCC-1500 PLASMA POWER SUPPLY, 1,500 amps, S/N PE1802200; **MILLER RESISTANCE SSW-1020ATT SPOT WELDER**, fabricated stand, foot pedal control, S/N KA752912; **MK PRODUCTS POSITURN 4 DIGITAL CONTROL WELDING TURNTABLE** w/tilt base (unused); **ATLAS 200-LB. CAP. MDL. 200 BENCH TOP WELDING POSITIONER** w/tilt bed and foot pedal control; **LARGE AMOUNT OF TWECO AND WELDSKILL MIG GUNS; WELDING LEADS; (18) OXY./AC. TORCH KITS** incl. gauges, cutting torch and hoses.

MISC. SHOP & WAREHOUSE EQUIPMENT

REMOTE ELECTRIFICATION SYSTEMS w/transformers, (1) 10 v. receptacle, disconnect switches and breaker panels; **(32) H.D. GAS BOTTLE CARTS** w/large dia. wheels; **DOZENS OF 10'L. X 48" WIRE CAGE PANELS**, some eqpd. w/gauges, hoses and cutting torch; **LARGE SELECTION OF SAFETY EQUIPMENT** incl. hard hats, safety cones, barriers, etc.; **DOZENS OF FIRE EXTINGUISHERS; (30) EXTENSION AND STEPLADDERS** up to 32' ht.; **HUGE ASSORTMENT OF BOLTS, NUTS, WASHERS, LOCK WASHERS AND OTHER ASSORTED FASTENERS**, Grade A325, most are 5/8" x 1-1/2"; **LARGE SELECTION OF CUTTING TOOLS; ANGLE PLATES; CLAMPING EQUIPMENT; DRILLS; MILLS; MILLING CUTTERS; DRILL INDEXERS; SPOT FACING DRILLS; REAMERS; SIDE MILLING CUTTERS; HUGE ASSORTMENT OF FASTENERS** incl. shoulder bolts, flathead hex bolts, nuts, jam nuts, shakeproof washers, lock washers, bevel washers; **SEVERAL 48" AIR CIRCULATORS; ENCO MDL. 67101 ROCKWELL HARDNESS TESTER**, S/N 78/472; **SAFETY SPD. CUT 72"W. X 10'L. PANEL SAW**; **BLACK AND DECKER PROFESSIONAL 14" H.D. CHOP SAW** w/wood bench; **CUSHMAN EXPLORER MINUTE MISER ELECTRIC VEHICLE**, 24 v.

HEAVY FABRICATED CRANE STRUCTURE

**ORIGINALLY BUILT FOR TESTING
AUTOMOBILE LIFTERS** but adaptable to most crane purposes, 88'L., currently 22'W., currently 10'-7" floor to top of rail, consists of (12) heavy fabricated uprights, dbl. linear rails w/web section, all bolted construction for easy removal.

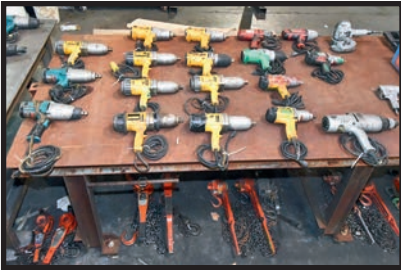


**THURSDAY, MAY 19
10:00 A.M.
LIVE ONLINE WEBCAST
(NO ONSITE BIDDING)**



POWER & HAND TOOLS

HUGE ASSORTMENT OF HAND TOOLS incl. dozens of vise grip welding clamps, combination wrenches up to 2", forged C-clamps, hand hyd. pwr. supplies, bar clamps; **JACKS**; **BODY STRAIGHTENING KITS**; **INGERSOLL RAND AND CHICAGO PNEUMATIC IMPACT GUNS**; (9) **DEWALT 3/4" ELECTRIC IMPACT GUNS**; (7) **MAKITA 3/4" ELECTRIC IMPACT GUNS**; **STRAIGHT SHAFT GRINDERS**; (8) **4" RIGHT ANGLE GRINDERS**; (6) **6" RIGHT ANGLE GRINDERS**; (6) **MILWAUKEE PORTA-BANDSAWS**; (4) **BLACK & DECKER 1" H.D. ELECTRIC DRILLS**; **CHAMPION ROTOBRUTE MAGNETIC BASE DRILL**; (6) **SLUGGER JM101 MAGNETIC BASE DRILLS**; (2) **JANCY MAGNETIC BASE DRILLS**; (4) **ADDITIONAL MAGNETIC BASE DRILLS**; (12) **JET 1-1/2 T. UP TO 3 T. COME-ALONGS**; **WIDE SELECTION OF H.D. JOBSITE TOOLBOXES** by Knaack and others; **RIGGERS PICKS**; **SLEDGE HAMMERS**; **HILTI EPOXY GUNS**; **LEVELS**; **PORTABLE ROLLING SCAFFOLDS**; **KURT 6" H.D. MILLING VISES**.



Assets Located at
ALLIED UNIKING CORPORATION
4750 CROMWELL AVENUE
MEMPHIS,
TENNESSEE 38118

THURSDAY, MAY 19
10:00 A.M.
LIVE ONLINE WEBCAST
(NO ONSITE BIDDING)



RAW MATERIAL

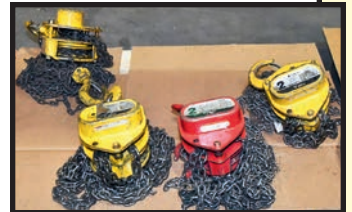
HUGE ASSORTMENT OF UNUSED STEEL, incl. (7) heavy wall tubing up to 3/8" wall x 16 x 12 x 18'L., numerous other sizes incl. 10 x 10, 8 x 8, 5 x 5, 4 x 5, in various lengths.

LARGE QTY. OF EXPANDED METAL GRATE, in various sheet sizes.

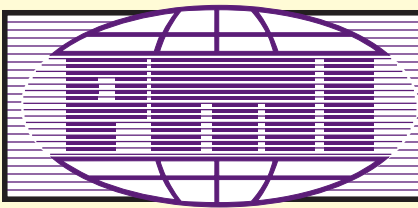


MATERIAL HANDLING EQUIPMENT

GLOBE 4,000-LB. CAP. HYDRAULIC SCISSOR LIFT TBL., foot pedal control; **SKATE WHEEL CONVEYOR** on rack; **SELECTION OF LARGE FABRICATED STEEL FORKLIFT PLATFORMS**; **ASSORTMENT OF TIER DROP STYLE PALLET RACKS**, 12' ht., 8' beams, 3-tier; (14) **TIER DROP PALLET RACK SECTIONS**; **SELECTION OF 658 OVERHEAD CHAIN** w/extra heavy trolleys for pwr. and free conveyor use; (2) **H.D. TRANSPORT CARTS** w/hitch pull and inflatable rubber tiers; **LARGE ASSORTMENT OF H.D. FABRICATED STEEL HORSES**; (2) **SUMNER MFG. 750-LB. CAP. MDL. 715 MATERIAL HOISTS**; (2 SETS) **8' FORK EXTENSIONS**; **STRAPS**; **SINGLE AND MULTI-LEG CHAINS**; **10' 3-HOOK SPREADER BAR**; **WIRE ROPE** in basket and storage racks; **DOZENS OF HAND CHAIN FALLS** up 2 T. cap. by Duct Norton, Yale, Harrington, CM and others; (3) **AERO 1/4 T. CAP. AIR OPERATED HOISTS**; **AEC MAGNETICS ELECTROMAGNETIC PLATE LIFTER**, 110 v., 12 amps, LCR-16-110T cap.; (20) **PALLETINER 48" SQ. 4,000-LB. CAP. COLLAPSIBLE WIRE BASKETS**.



INSPECTION: Tuesday & Wednesday, May 17 & 18, 9:00 A.M. to 4:00 P.M.



PMI AUCTION



NISSAN 8,000-LB. BASE CAP. FORKLIFT

FORKLIFTS

NISSAN 8,000-LB. BASE CAP. MDL. CRGH02E35V, 7,550-lb. cap. as equipped, triple mast, 191" max. lift, 60" forks, non-marking cushion tires, side shift, 2,736 H.O.M., S/N CRGH02-906857.

HYSTER MDL. S80XLBCS, 7,550-lbs. @ 20" L.C., 6,900-lbs. @ 24" L.C., 3-stage mast, 60" forks, side shift, S/N D004V04150L (currently out of service).

NISSAN APPROX. 5,000-LB. BASE CAP., LG pwrdr., 48" forks, cushion tires.

HYSTER 5,000-LB. BASE CAP. MDL. S50XL, side shift, 8,808 H.O.M., S/N A187V13001K.

HYSTER 5,000-LB. BASE CAP., LG pwrdr., 48" forks, side shift, cushion tires, S/N N.A. (currently out of service).



FORD F-150XL PICKUP TRUCK

PICKUP TRUCKS

1995 FORD MDL. F-150XL, dual fuel tanks, front bench seat, 8' bed, ODO: 126,000 miles, TN License No. 65551, VIN 2FTEF15N4SCA60230.

1997 FORD MDL. F-150XLT, extended cab, ODO: 178,947 miles, TN License No. 41008, VIN 1FTDX-1768VND40097.



FORD E-350XL SUPER DUTY PASSENGER VAN

PASSENGER VAN

2000 FORD MDL. E-350XL SUPER DUTY, Triton V8 engine, 15-passenger, (2) rear bench seats, ODO: 61,688 miles, TN License No. 9028H12, VIN 1FBSS31L3YHB59691.

LAWN & GARDEN

YANMAR MDL. YM2500 DIESEL TRACTOR, King Kutter Inc. 60" finish mower, 1,281 CC diesel engine, rear pwr. take-off, S/N 07231.

JOHN DEERE MDL. Z2350 ZERO TURN LAWNMOWER.

POULAN PRO 625 PUSH MOWER, Briggs & Stratton engine, key start.



YANMAR YM2500 DIESEL TRACTOR



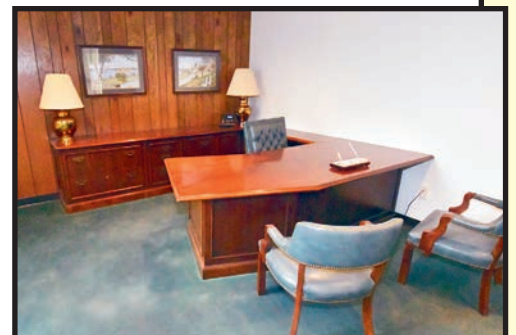
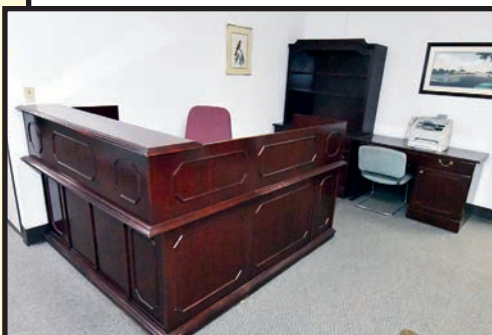
JOHN DEERE Z2350 ZERO TURN LAWNMOWER



FORD F-150XL PICKUP TRUCK

OFFICE FURNITURE & EQUIPMENT

SELECTION OF DESKS, CHAIRS, FILING CABINETS, FLAT FILES, CONFERENCE ROOM TBL. AND CHAIRS, RECEPTION AREA FURNITURE.



FOR BIDDING AT THIS AUCTION Go to www.pmi-auction.com and click on BidSpotter or proxibid on our calendar page for this auction sale.

PLANT & MACHINERY INC.

AUCTIONEERS • APPRAISERS • LIQUIDATORS • REAL ESTATE

P.O. Box 218568
Houston, TX 77218-8568

DATED MATERIAL - PLEASE DELIVER

THURSDAY, MAY 19 • 10:00 A.M.
LIVE ONLINE WEBCAST (NO ONSITE BIDDING)



**ATTENTION: PLANT MANAGER
OR EQUIPMENT BUYER**

Presorted
First Class Mail
U.S. Postage
PAID
Eugene, Oregon
Permit No. 17

WORLD RENOWNED MANUFACTURER OF CHAIN CONVEYOR SYSTEMS

**FEATURING: Fabricating Machinery,
Machine Shop Equipment, Large Assortment
of Field Installation Tools, Material Handling
Equipment, Large Selection of New Steel
Materials, Forklifts, and Much, Much More**



(1 OF 7) MUBEA MECHANICAL
IRONWORKERS



**DRIES &
KRUMP
CHICAGO
12' X 150 T.
PRESS
BRAKE**

**CINCINNATI
10' X 5/8"
HYDRAULIC
PLATE SHEAR**



**INITIAL PINCH PLATE ROLL
W/OUTBOARD ANGLE ROLL**

PARTIAL TERMS & CONDITIONS:

An 18% Buyer's Premium Will Apply. This is an Live Online Webcast (No Onsite Bidding) Auction.

Everything will be sold to the highest bidder or bidders for cash in accordance with the auctioneer's Customary Terms of Sale, copies of which will be posted on the premises.

ALL PAYMENTS MUST BE MADE BY CASHIER'S CHECK, WIRE TRANSFER OR COMPANY CHECK WITH BANK LETTER GUARANTEEING PAYMENT TO PLANT & MACHINERY INC.

Here is an example of what your letter should be: Mr. "Customer Name" is a customer of this bank. This bank will guarantee unqualified payment to PMI on the account listed herein up to the amount of \$_____. This letter is good until June 20, 2022.

In default of payment of bills in full within the time therein specified, the Auctioneer in addition to all other remedies allowed by law, may retain all monies received as deposit or otherwise, as liquidated damages. All items must be removed by the time announced at the start of the sale.

Lots not paid for and/or removed within the time allowed may be resold at public or private sale without further notice, and any deficiency, together with all expenses and charge of resale, will be charged to the defaulting purchaser.

The buyer acknowledges that he or an agent has inspected all of the assets upon which he will be bidding and/or does purchase.

Buyer agrees to accept assets purchased "AS IS," WITH "ALL FAULTS"

AND "WITH REMOVAL AT BUYER'S RISK AND EXPENSE." THE AUCTIONEER EXPRESSLY DISCLAIMS ON THE PART OF THE AUCTIONEER AS AGENT AND THE SELLER, ANY WARRANTY AS TO FITNESS OR USABILITY OF ALL THE ASSETS, AND THE BUYER EXPRESSLY WAIVES ANY CLAIM IN RESPECT TO ANY POSSIBLE FUTURE USE OF ANY ASSET PURCHASED FOR ANY PURPOSE WHATSOEVER.

The buyer does hereby assume and does agree to indemnify and hold the auctioneer harmless from any future claim which shall pertain to the fitness or use of that asset as being purchased. Riggers, movers, electricians and buyers performing work at the Auction Site must provide PMI with evidence of insurance. The insurance coverage must be at a level acceptable to PMI and to the seller. PMI reserves the right to withdraw items, alter the order of the sale, accept bids from the seller, and group lots as it may deem appropriate. This auction may include consignment items.

Although all information has been obtained from sources deemed reliable, the auctioneer and seller make no warranty or guarantee, expressed or implied, as to the accuracy of the information herein contained, or contained in our catalog. It is for this reason that buyers should avail themselves of the opportunity to make inspection prior to the auction. Although it is not likely, auction sales are subject to cancellation or postponement. Kindly contact auctioneer prior to attendance.

These terms and conditions may be modified or supplemented by language in the catalog available at the sale site or by announcement at the start of the sale. Bidders should be attentive to those announcements and to the catalog language.

ONLINE REGISTRATION

Register to bid at

BidSpotter or **proxibid**

1. Use the link to Bidspotter.com or Proxibid.com on PMI's website calendar. **www.pmi-auction.com DO IT NOW!**
2. This auction may require a Cash, or credit card, or debit card, 100% refundable deposit. If by credit or debit card, it can be added through the Bidspotter.com fully secure and PCI compliant registration process and will be assessed a 100% refundable \$3,000 (US Bidder) or a \$10,000 (Foreign Bidder) deposit in order to be approved to bid online with this auction. Cash deposits can be made by wire transfer. **DON'T WAIT.** If you are unsuccessful in the auction, the refund of your credit/debit card deposit will occur shortly after the auction ends. Cash deposits will be expedited as well.

If you need assistance, don't hesitate to call (713) 691-4401.

**ALL BIDS ARE SUBJECT TO AN
18% BUYER'S PREMIUM.**