

AUCTION

**AUCTION POSTPONED TO TUES. & WED. JULY 23 & 24
DUE TO THE HURRICANE'S IMPACT ON THE INTERNET**



**AS NEW AS
2017**

12' X 12' WELD WIRE SUBARC MANIPULATORS



2012

KOIKE ARONSON 10' X 14' PLASMA AND OXY CUTTING SYSTEM



DAY 2: PRESSURE TEST EQUIPMENT



DAY 2: PARTS INVENTORY



150 HP

SULLIVAN-PALATEK 150 HP ROTARY SCREW AIR COMPRESSOR SYSTEM

**DAY ONE: TUESDAY,
JULY 23 – LIVE ONSITE &
WEBCAST • 10:00 A.M.**



2015

2015 FORD F-450 SUPER DUTY FLATBED TRUCK

**DAY TWO: WEDNESDAY, JULY 24 – TIMED ONLINE – NO ONSITE BIDDING
BIDS START CLOSING AT 10:00 A.M.**

INSPECTION:
Monday, July 22,
9:00 A.M. to 4:00 P.M.

BUYER'S PREMIUM:
DAY 1: 15% ONSITE
18% ONLINE
DAY 2: 18% ONLINE

YOU MUST REGISTER IN
ADVANCE FOR ONLINE BIDDING
AT THIS AUCTION.

Go to www.pmi-auction.com
and click on BidSpotter
or Proxibid on our calendar
page for this auction sale.

**PRODUCTION
FACILITIES
EQUIPMENT
COMPANY, INC.**
28010 FM 2978,
MAGNOLIA, TEXAS 77354

Sale Conducted By:

PLANT & MACHINERY INC.
AUCTIONEERS • APPRAISERS • LIQUIDATORS • REAL ESTATE

Ron Moore, TX Lic. #7314

E-MAIL: pmi@pmi-auction.com • WEBSITE: www.pmi-auction.com

Headquarters:
1304 Langham Creek Drive, Suite 454
Houston, Texas 77084

PHONE: (713) 691-4401

FAX: (713) 672-7905



**AS NEW AS
2017**

SUBARC MANIPULATORS

WELDWARE MDL. WEM-1212LD, Mfg. 2017, 12' x 12' cap., Lincoln DC1000 pwr. source w/ Lincoln NA-3N control, S/N U1130807007, Weld Engineering flux head, S/N 514010.

WELDWARE MDL. WEM-1212LD, Mfg. 2013, 12' x 12' cap., Lincoln DC1000 pwr. source w/ Lincoln NA-3N control, S/N U1130602995, Weld Engineering flux head, S/N 137370.



WELDING MACHINES

APPROX. (20) MILLER DELTAWELD 302 WELDERS, w/70 Series dual wire feeders; **(2) MILLER SUBARC DC650; MILLER DIMENSION 452; MILLER DELTAWELD 452 AND 451; LINCOLN RANGER 305G GAS DRIVEN WELDER**, Mfg. 2018, S/N U1181204169, w/Lincoln LN-25 Pro suitcase wire feeder, mounted on a portable skid.



**LARGE
CAPACITY**

AUTOMATIC HORIZONTAL BANDSAW

SCOTCHMAN MDL. SHA-3121, 21" x 31" cap. at 90 deg., 21" x 14" cap. @ 60 deg., auto bar feed system, mitring, S/N NA.



**7
AVAILABLE**

WELDING POSITIONERS

WELDWARE MDL. WPT-30/6, 3,000-lb. cap., 6" overhung from face of tbl., S/N 152344; **(2) WELDWARE MDL. WPT-15/6**, 1,500-lb. cap., 6" overhung from face of tbl., S/N 131593, S/N NA; **(3) WELDWARE**, 1,000-lb. cap., w/12" 3-jaw chucks, S/N NA; **WELDWARE**, 750-lb. cap., w/12" 3-jaw chuck, S/N NA.



HORIZONTAL BANDSAW

WELLS SAW MDL. 1016, 10" x 16" cap.



CIRCLE WELDING SYSTEMS

CIRCLE WELDING INNOVATIONS INC. MDL. RW-1500, S/N J-10467 and **CIRCLE WELDING INNOVATIONS INC. MDL. RB-2500**, S/N L081447.

INSPECTION:
Monday,
July 22,
9:00 A.M.
to 4:00 P.M.



2012

PLASMA & OXY CUTTING SYSTEM

KOIKE ARONSON PLATE-PRO EXTREME MDL. PLP-X-3100, Mfg. 2012, 120"W. x 168"L. effective cutting cap., Hypertherm Edge Pro control, Hypertherm HPR130XD HyPerformance Plasma power source, 10"W. x 12"L. water tbl., S/N 47514.



TANK TURNING ROLL SETS

(3) 20 T. WELDWARE MDL. WWRD-20ST DRIVER AND WWRI-20ST IDLER SETS.

(15) 10 T. WELDWARE MDL. WWRD-10 DRIVER AND WWRI-10 IDLER SETS.



IRONWORKER

MARVEL SPARTAN MDL. IW50S, 50 T. cap., S/N 196.

DON'T MISS THIS SALE!



AUCTION

**PRODUCTION FACILITIES
EQUIPMENT COMPANY, INC.**

28010 FM 2978, MAGNOLIA, TEXAS 77354

DAY ONE: LIVE ONSITE W/WEBCAST

Featuring: Material Cutting, Welding & Handling Equipment; Large Unused Paintbooth; Truck & Trailers; ATV; Conex Boxes; Raw Material; Storage Racks; Forklifts; MORE!

TUESDAY, JULY 23 • 10:00 A.M.



HEATED WATER PRESSURE WASHER



RIDGID MDL. 1224 PIPE THREADER



ASSORTED HELPER STANDS



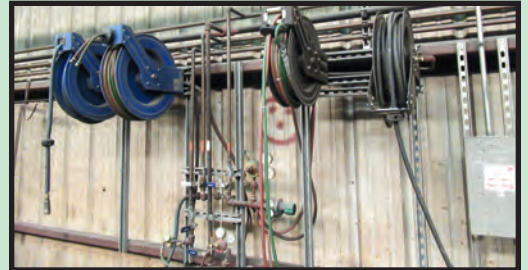
SAMPLE VIEW OF KNAACK TOOL BOXES



SAMPLE VIEW OF POWER AND HAND TOOLS



PEDESTAL FANS



COX HOSE REELS



SAMPLE VIEW OF HOPPERS



20' CONEX W/MAN DOOR



OPEN SIDE CONEX W/SIDE DOORS

WELDING SUPPORT EQUIPMENT

PORTABLE SUB ARC WELDING BOOM ON CASTERS W/LINCOLN LN-7GMA CONTROL; BUG-O TRACK TORCHES; WELDING CONSUMABLES; GRINDING WHEELS, unused; WELDING LEADS; FLUX HEADS; WELDING SHIELDS; MORE.

SHOP SUPPORT EQUIPMENT

MILWAUKEE AND (2) MAGDRILL DISRUPTOR 55 MAG BASE DRILLS; SIEVERS, heated, electric pressure washer; WIDE SELECTION OF 30" PEDESTAL SHOP FANS; LARGE QUANTITY OF COX HOSE REELS; RIDGID ROLLER, JACK AND PIPE STANDS; WELDING SCREENS; HD FAB. TBLs. w/VISES; KNAACK TOOL BOXES; ELECTRIC PNEUMATIC AND HAND TOOLS, MACHINE LEVELS; PORTABLE HITACHI AIR COMPRESSOR W/ HONDA 160 GAS ENGINE; CUTTING TORCHES; ENERPAC HYD. PACKS; MAC TOOLS TORQUE WRENCHES; CHART RECORDERS; HYDRO TEST CART W/PUMP; BLAST POTS; ASSORTED ABRASIVE MATERIAL; DIESEL FUEL TANK W/CONTAINMENT SKID AND PUMP; MORE.

DRILL PRESS

PALMGREN 20" MDL. 80207A, S/N 10140021.

PIPE THREADING MACHINES

RIDGID MDL. 1224; (2) RIDGID MDL. 535's.

MATERIAL HANDLING

HEAVY DUTY RIGGING STRAPS AND SHACKLES; CHAINS; 5,500-LB. MIGHTY LIFT PALLET JACK; APPROX. (12) HIPPO HOPPER DUMP HOPPERS; FORKLIFT MAN BASKET; ASSORTED ADJUSTABLE PALLET RACKS.

CONEX BOXES

(2) 40'; 20' OPEN SIDE; 20' ELECTRIFIED W/SIDE DOOR.

INDUSTRIAL DUST COLLECTOR

CAMFIL FARR MDL. GS40 GOLD SERIES, Mfg. 2013, 73.8 HP fan, 32,000 cfm, 40 filters, 8" w.g. static pressure, 2.46:1 air to cloth ratio, S/N 999186001. (Steel shot blast application).

FLATBED TRUCK

2015 FORD F-450 SUPER DUTY, 6.7 L. pwr. stroke, diesel, diamond plate flat bed, 10'L. bed, ODO: 72,897 miles, auto. transmission, TX Lic.: FDT2208, VIN: 1FD0W4HT-6FEB34040.



UTILITY TRAILERS

NATIONWIDE PJ TRAILER, 24', tandem axle, wood deck, TX Lic.: 761126H, VIN 4P5F82424F121-9935, Mfg. 2015.

AMERITRAIL, 20', tandem axle, wood deck, TX. Lic.: 256041J, VIN 17YBP20272B025125, Mfg. 2002.



SIDE X SIDE ATV

2018 KAWASAKI MULE MDL. 4010, (2) bench seats, VIN JK1AFCR11JB532406.



2015

2 AVAILABLE

AS NEW AS 2017



POWERED ELECTRIC STACKERS

(2) **PRESTO POWER-STACK MDL. PPS2200-150AS**, 2,200-lb. cap., built in charger, Mfg. 2017 and 2014.

INSPECTION:
Monday, July 22,
9:00 A.M.
to 4:00 P.M.

150 HP

ROTARY SCREW AIR COMPRESSOR SYSTEMS

COMPAIR BY GARDNER DENVER MDL. L200-9A, Mfg. 2013, 268 HP, S/N CD10014492001.

INGERSOL RAND MDL. SSR-EP250, 250 HP, 1,066 cfm, S/N DE1679U07311.

SULLIVAN-PALATEK MDL. SP20-150, 150 HP, 460 volt, 3-phase, 125 PSI, S/N 1307250001, Sullivan-Palatek Mdl. SPRF-940A-436 refrigerated air dryer, 460 volt, air receiving tank.

CHAMPION BY GARDNER DENVER, 21,876 H.O.M., w/Champion by Gardner Denver air dryer and air receiving tank.

2018

RAW MATERIAL & CANTILEVER RACKS

ASSORTED PIPE; CHANNEL; I-BEAM; SQ. TUBING. See catalog for details.



FORKLIFTS

CATERPILLAR 12,000-LB. BASE CAP. MDL. GP55N1, LPG engine, 89" 3-stage mast, 189" lift ht., side shift, pneumatic tires, 60" forks, H.O.M. 9,107, S/N AT33C90313.

HYSTER 10,000-LB. BASE CAP. MDL. H100FT, diesel engine, 95" 3-stage mast, 196" lift ht., side shift, pneumatic tires, 48" forks, H.O.M. 8,071 S/N N005V02132E.

YALE 8,000-LB. BASE CAP. MDL. GLP080LJNG-BE093, LPG engine, 94" 3-stage mast, 194" lift ht., side shift, pneumatic tires, 48" forks, S/N C813V03279A.

YALE 7,000-LB. BASE CAP. MDL. GLC070VXN-VRE085, Mfg. 2013, LPG engine, 85" 3-stage mast, 181" lift ht., side shift, cushion tires, 42" forks, H.O.M. 7,602, S/N A910V23980L.

TOYOTA 6,500-LB. BASE CAP. MDL. 8FGCU32, Mfg. 2020, LPG engine, 83" 2-stage mast, 131" lift ht., cushion tires, 42" forks, H.O.M. 7,580 S/N C0581.

TOYOTA 5,000-LB. BASE CAP. MDL. 8FGU25, Mfg. 2017, dual fuel LPG/gas engine, 83" 3-stage mast, 189" lift ht., side shift, pneumatic tires, 48" forks, H.O.M. 2,346, S/N 75126.

TOYOTA 5,000-LB. BASE CAP. MDL. 8FGCU25, Mfg. 2020, LPG engine, 83" 3-stage mast, 189" lift ht., side shift and fork positioner, cushion tires, 42" forks, S/N C2896.

DOOSAN 5,000-LB. BASE CAP. MDL. GC25E-5, Mfg. 2018, LPG engine, 83" 3-stage mast, 189" lift ht., side shift, cushion tires, 42" forks, S/N FGAOL-1790-01528.

CATERPILLAR 5,000-LB. BASE CAP. MDL. 2C5000, Mfg. 2014, LPG engine, 83" 3-stage mast, 189" lift ht., side shift, cushion tires, 42" forks, S/N AT9041921.

PRINCETON 5,000-LB. BASE CAP. MDL. PB50, truck mounted lift, Cat 3024C diesel engine, 2-stage mast, 120 lift ht., side shift, pneumatic tires, S/N 123573306.

UNUSED TRUCK & EQUIPMENT SPRAY BOOTH

MARATHON PRESSURIZED SIDE DOWN DRAFT SPRAY BOOTH MDL. SDDT-252060-70L-P-DT, Mfg. 2016, unused and uninstalled, booth dimensions: I.D. 25'W. x 20'H. x 60' working depth, (2 sets) bi-fold 20'W. x 18'H. drive through doors w/windows, complete w/full set of drawings, intake and exhaust systems, lights, doors, windows, motors, fans and hardware. (Orig. cost of \$163K).



CATERPILLAR
12,000-LB.
BASE CAP.
LPG FORKLIFT



YALE
8,000-LB.
BASE CAP.
LPG FORKLIFT



DAY 2: ONLINE ONLY TIMED AUCTION

Featuring: Huge Unused Vessel Parts Inventory Incl. Electric Motors, Fittings & More; Pressure Testing Area w/38,000+ PSI Pump, Blind Flanges, Safety Blast Walls, Tanks & More; Modern High Quality Office Furniture.

WEDNESDAY, JULY 24
NO ONSITE BIDDING
BIDS START CLOSING
AT 10:00 A.M.



VESSEL PARTS INVENTORY

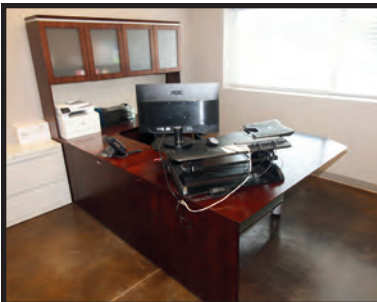
HUGE QTY. OF UNUSED EATON HIGH PRESSURE VALVES; KIMRAY DIAPHRAGM VALVES; BALON VALVES; APACHE VALVES; PUMPS; GAUGES; ELECTRIC MOTORS; HARDWARE; SEALS; MANIFOLD VALVES; AIR CONTROL VALVES; HIGH PRESSURE SITE GLASSES; PIPE NIPPLES; REGULATORS; PORT STEEL FLANGES; WELD FITTINGS; UNIONS; HAMMER FITTINGS; ELBOWS; THREADED FLANGES AND MUCH MORE! See catalog for details.

PRESSURE TEST AREA

INCL.: VALVES, GAUGES, BLIND FLANGES, CONCRETE BARRIER BLOCKS; HIGH VOLUME PLASTIC TANKS; WIDE SELECTION OF HARDWARE: FLANGE BOLTS, SEALS; ASSORTED ACCESSORIES.

MODERN HIGH QUALITY OFFICE FURNITURE

DESKS; CREDENZAS; CHAIRS; BREAKROOM AND MORE.



INSPECTION: Monday, July 22, 9:00 A.M. to 4:00 P.M.

PARTIAL TERMS & CONDITIONS:

A 15% Buyer's Premium Will Apply Onsite. An 18% Buyer's Premium Will Apply Online.

Everything will be sold to the highest bidder or bidders for cash in accordance with the auctioneer's Customary Terms of Sale, copies of which will be posted on our website.

ALL PAYMENTS MUST BE MADE BY CASHIER'S CHECK, WIRE TRANSFER OR COMPANY CHECK WITH BANK LETTER GUARANTEEING PAYMENT TO PLANT & MACHINERY INC.

Here is an example of what your letter should be: Mr. "Customer Name" is a customer of this bank. This bank will guarantee unqualified payment to PMI on the account listed herein up to the amount of \$_____. This letter is good until August 26, 2024.

In default of payment of bills in full within the time therein specified, the Auctioneer in addition to all other remedies allowed by law, may retain all monies received as deposit or otherwise, as liquidated damages. All items must be removed by the time announced at the start of the sale.

Lots not paid for and/or removed within the time allowed may be resold at public or private sale without further notice, and any deficiency, together with all expenses and charge of resale, will be charged to the defaulting purchaser.

The buyer acknowledges that he or an agent has inspected all of the assets upon which he will be bidding and/or does purchase.

Buyer agrees to accept assets purchased "AS IS," WITH "ALL FAULTS"

AND "WITH REMOVAL AT BUYER'S RISK AND EXPENSE." THE AUCTIONEER EXPRESSLY DISCLAIMS ON THE PART OF THE AUCTIONEER AS AGENT AND THE SELLER, ANY WARRANTY AS TO FITNESS OR USABILITY OF ALL THE ASSETS, AND THE BUYER EXPRESSLY WAIVES ANY CLAIM IN RESPECT TO ANY POSSIBLE FUTURE USE OF ANY ASSET PURCHASED FOR ANY PURPOSE WHATSOEVER.

The buyer does hereby assume and does agree to indemnify and hold the auctioneer harmless from any future claim which shall pertain to the fitness or use of that asset as being purchased. Riggers, movers, electricians and buyers performing work at the Auction Site must provide PMI with evidence of insurance. The insurance coverage must be at a level acceptable to PMI and to the seller. PMI reserves the right to withdraw items, alter the order of the sale, accept bids from the seller, and group lots as it may deem appropriate. This auction may include consignment items.

Although all information has been obtained from sources deemed reliable, the auctioneer and seller make no warranty or guarantee, expressed or implied, as to the accuracy of the information herein contained, or contained in our catalog. It is for this reason that buyers should avail themselves of the opportunity to make inspection prior to the auction. Although it is not likely, auction sales are subject to cancellation or postponement. Kindly contact auctioneer prior to attendance.

These terms and conditions may be modified or supplemented by language in the catalog available online or by announcement at the start of the sale. Bidders should be attentive to those announcements and to the catalog language.

ONLINE REGISTRATION AT BidSpotter or proxibid

1. Use the [link](#) to Bidspotter.com or Proxibid.com on PMI's website calendar. [www.pmi-auction.com](#) DO IT NOW!
2. This auction will require a Cash, or credit card, or debit card, 100% refundable deposit. If by credit or debit card, it can be added through the Bidspotter.com or Proxibid.com fully secure and PCI compliant registration process and will be assessed a 100% refundable \$3,000 (US Bidder) or a \$10,000 (Foreign Bidder) deposit in order to be approved to bid online with this auction. Cash deposits can be made by wire transfer. **DON'T WAIT.** If you are unsuccessful in the auction, the refund of your credit/debit card deposit will occur within 24 hours. Cash deposits will be expedited as well.

If you need assistance, don't hesitate to call (713) 691-4401.

ALL BIDS ARE SUBJECT TO AN 18% BUYER'S PREMIUM.

PLANT & MACHINERY INC.
 AUCTIONEERS • APPRAISERS • LIQUIDATORS • REAL ESTATE

P.O. Box 218568
 Houston, TX 77218-8568

DATED MATERIAL - PLEASE DELIVER

**DAY ONE: TUESDAY,
 JULY 23 – LIVE ONSITE &
 WEBCAST • 10:00 A.M.**

**DAY TWO: WEDNESDAY, JULY 24
 TIMED ONLINE – NO ONSITE BIDDING
 BIDS START CLOSING AT 10:00 A.M.**

PUBLIC AUCTION



**ATTENTION: PLANT MANAGER
 OR EQUIPMENT BUYER**

Presorted
 First Class Mail
 U.S. Postage
 PAID
 Eugene, Oregon
 Permit No. 17

**HUGE 2-DAY SALE AT
 A VESSEL
 FABRICATION/
 RE-MANUFACTURING
 FACILITY**



PRODUCTION FACILITIES EQUIPMENT COMPANY, INC.



FLATBED TRUCK
 2007 ISUZU NPR, diesel, 191,313 H.O.M., VIN
 JALB4W16677400177.

BUILDING FOR LEASE
 36,775 Total Sq. Ft. on 6.25 Acres of Stabilized Yard; • 10–20-Ton Overhead Cranes; Clear Span
 Buildings; 32'–43' Clear Height; 4,675 Sq. Ft. Freestanding Office Building
 For More Information Contact Patrick McKiernan • (713) 444-9715 • Patrick@fhproperties.com



**SCOTCHMAN
 AUTOMATIC
 HORIZONTAL
 BANDSAW**



**MARATHON
 PRESSURIZED
 SIDE DOWN
 DRAFT
 SPRAY BOOTH**

**2-DAY SALE
 JULY 23 & 24**

**YOU MUST REGISTER IN ADVANCE FOR
 ONLINE BIDDING AT THIS AUCTION.**
 Go to www.pmi-auction.com and click on
BidSpotter or **proxibid**
 on our calendar page for this auction sale.