



LIVE WEBCAST AUCTION

MULTIPLE LOCATIONS IN THE HOUSTON TEXAS AREA

LARGE STRUCTURAL STEEL INVENTORY; STRUCTURAL STEEL BLAST MACHINE (Refurb. 2024); BYSTONIC 6-AXIS CNC PRESS BRAKE; MESSER CNC PLASMA CUTTING SYSTEM; HYDRAPOWER HYDRAULIC SHEAR; (3) JOHNFORD & LITZ-HITECH VERTICAL MACHINING CENTERS; MAKINO HORIZONTAL MACHINING CENTER; AUTOCLAVED AERATED CONCRETE PANELS; MORE!



LS INDUSTRIES, INC. MDL. STRB4848-4 STRUCTURAL BLAST MACHINE



320 T. X 161.42" BYSTRONIC MDL. XPERT 320 6-AXIS CNC PRESS BRAKE

WEDNESDAY, MAY 6 AT 10:00 A.M. CDT LIVE ONLINE WEBCAST (NO ONSITE BIDDING)

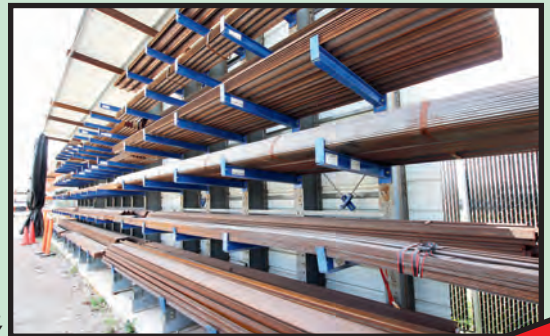
FOR BIDDING AT THIS AUCTION: YOU MUST REGISTER TO BID IN ADVANCED FOR ONLINE BIDDING AT THIS AUCTION. Go to www.pmi-auction.com and click on BidSpotter or proxbid on our calendar page for this auction sale.



HYDRAPOWER 3/4" X 12' MDL. SV6012 HYDRAULIC SHEAR

INSPECTION:
Varies by Location.
See Each Location for Details.

STRUCTURAL STEEL INVENTORY



JOHNFORD MDL. VMC-1600 SHD VERTICAL MACHINING CENTER

18% BUYER'S PREMIUM WILL APPLY

Read Partial Terms & Conditions on Inside

LITZ HITECH MDL. CV-1400 VERTICAL MACHINING CENTER



2 AVAILABLE

Sale Conducted By:

PLANT & MACHINERY INC.

AUCTIONEERS • APPRAISERS • LIQUIDATORS • REAL ESTATE

Ron Moore, TX Lic. #7314

E-MAIL: pmi@pmi-auction.com • WEBSITE: www.pmi-auction.com

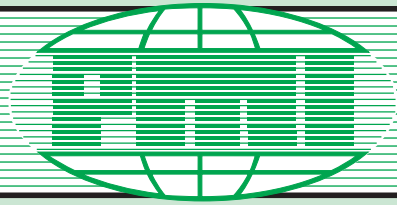
Headquarters:

1304 Langham Creek Drive, Suite 454,

Houston, Texas 77084

PHONE: (713) 691-4401

FAX: (713) 672-7905



AUCTION

WEDNESDAY, MAY 6 • 10:00 A.M. CDT
LIVE ONLINE WEBCAST (NO ONSITE BIDDING)

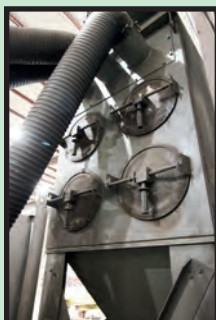


LOCATION #1
Surplus Due to the Plant Reconfiguration at:
J.T. THORPE & SON, INC.
13627 WEST HARDY ROAD,
HOUSTON, TEXAS 77060
INSPECTION: By Appointment,
Monday & Tuesday, May 4 & 5
from 7:00 A.M. to 5:00 P.M. CDT.
Contact Dave Lantz at (832) 851-7172.

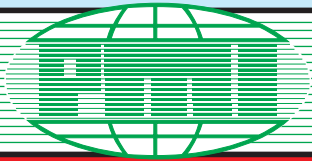


STRUCTURAL BLAST MACHINE
LS INDUSTRIES, INC. MDL. STRB4848-4, factory refurbished in 2024, 48" x 48" opening, (4) 25 HP blast wheels, manganese wear liners add to long term durability. **OTHER COMPONENTS:** **Dust Collection System:** United Air Specialists (UAS) Dust-Hog Mdl. SBD8-2 5,000 CFM using (8) horizontal filter cartridges and automatic pulse-clean system; **Infeed Conveyors:** (1) 27.5'L. x 66"W. overall w/54.5" W. chain driven live rollers w/39.5"H. floor to top of roller; (1) 40'L. x 54.5"W. rollers gravity fed first stage roller infeed section; **Outfeed Conveyor:** 28'L. x 66"W. overall w/54.5"W. chain driven live rollers. **Replacement Parts:** 25 HP Blast Wheel Motor; Spare Pistons for Shot Gates; Replacement Paddles w/Mounting Hardware; (8) Filter Cartridges.

GRAVITY FEED ROLLER CONVEYORS
(4) SECTIONS 30'L. X 66"W. w/54.5"L. X 3.25" DIA. ROLLERS, 39.5" floor to top of roller. (Note: These can be used w/the LSI blast machine for infeed or outfeed configurations.)



(4) ADDITIONAL GRAVITY FEED ROLLER CONVEYORS



PMI AUCTION

LIVE ONLINE BIDDING ONLY (NO ONSITE BIDDING):
YOU MUST REGISTER IN ADVANCE FOR ONLINE BIDDING
AT THIS AUCTION.
 Go to www.pmi-auction.com and click on
BidSpotter or **proxibid** on our calendar page
 for this auction sale.

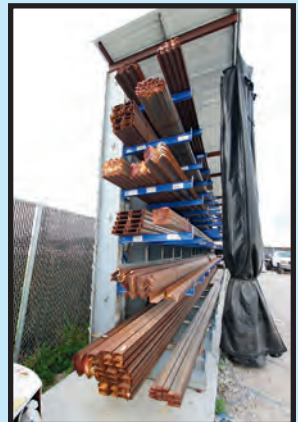
WEDNESDAY, MAY 6 • 10:00 A.M. CDT LIVE ONLINE WEBCAST (NO ONSITE BIDDING)

LOCATION 2
 By Order of the U.S. Bankruptcy Court, Southern District of
 Texas, Houston Division, Janet S. Northrup Chapter 7 Trustee,
 Case No. 26-30460 for the Estate of
VIMAR STEEL CORPORATION

Assets are stored at
DRYWALL DEPOT
10338 EAST HARDY RD., HOUSTON, TX 77093
INSPECTION: By Appointment Only on Monday & Tuesday, May 4 & 5
 from 9:00 A.M. to 3:00 P.M. Contact Luis Melo at (346) 351-8576.

SHAPES	LENGTH 20'	LENGTH 40'
ANGLES		
QUANTITY		
1" x 1" x 1/8"	290	
2" x 2" x 1/8"	88	140
2" x 2" x 3/16"	182	92
2" x 2" x 1/4"	102	
2-1/2" x 2-1/2" x 1/4"	45	
3" x 3" x 3/16"	54	60
3" x 3" x 1/4"		98
3" x 3" x 3/8"	64	
4" x 4" x 1/4"	28	
4" x 4" x 3/8"	24	

**LARGE QUANTITY OF ASTM A529 HIGH-STRENGTH
 CARBON-MANGANESE STRUCTURAL STEEL RAW MATERIAL.
 CHANNEL, ANGLES, FLAT BAR, ROUNDS.**



FLATS		
1/4" x 2"	163	
3/8" x 2"	84	
1/4" x 4"	68	

CHANNELS		
4"	33	41
6"		28
8"	20	20

SQUARES		
1/2"	270	

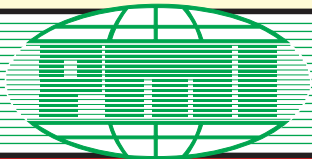
UNEQUAL ANGLES		
4" x 3" x 1/4"	4	
6" x 4" x 3/8"		36

ROUNDS		
3/4"	148	



**AUTOCLAVED AERATED
 CONCRETE (AAC-4)**

(214) PANELS, size 2,035 x 600 x 50 mm (80.12" x 23.62" x 1.969")
 (29) PANELS, size 1,220 x 600 x 50 mm (43.03" x 23.62" x 1.969")



PMI AUCTION

LIVE ONLINE BIDDING ONLY (NO ONSITE BIDDING):
YOU MUST REGISTER IN ADVANCE FOR ONLINE BIDDING
AT THIS AUCTION.
Go to www.pmi-auction.com and click on
BidSpotter or **proxibid** on our calendar page
for this auction sale.

WEDNESDAY, MAY 6 • 10:00 A.M. CDT
LIVE ONLINE WEBCAST (NO ONSITE BIDDING)

LOCATION 3
Surplus to the Ongoing Operations of:
HUNT PIPELINE PRODUCTS
123 TAM ROAD, HUNTSVILLE, TEXAS 77320
INSPECTION: By Appointment, Monday & Tuesday, May 4 & 5
from 9:00 A.M. to 4:00 P.M. CDT.
Contact John Hunt at (281) 610-6539 or email
sales@huntpipelineproducts.com.



6-AXIS CNC PRESS BRAKE

320 T. x 161.42" BYSTRONIC MDL. XPERT 320, Mfg. 2007, 6-axis back gauge, 60 HP, (2) dynamic sheet supports, Fiessler safety light curtain, wide selection of brake dies included, flush floor mounted (no foundation pit required), S/N 7560001.



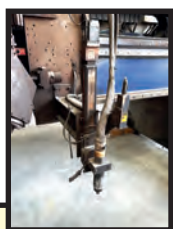
GANTRY CNC PLASMA CUTTING SYSTEM

MESSER MDL. MPC2016, Mfg. 2012, 18'W. w/110' of gantry rail capacity, Messer CNC control, (3) heads w/one beveling head, (3) Hypertherm Hyperformance HPR260HD plasma power sources w/consecutive serial numbers, serviced by Messer technicians, S/N MPC2016P-12-5662. (No water table. Build your own.) Seller will load at no charge.

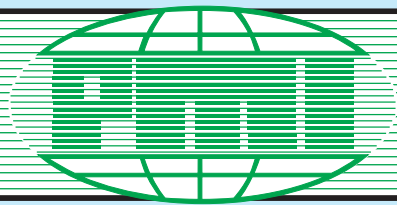


HYDRAULIC SHEAR

HYDRAPOWER 3/4" x 12' MDL. SV6012, recently rebuilt hyd. cylinders (\$25k cost), rebuilt hold downs, new extra blade included (\$5k cost), S/N G4091.



DON'T MISS THIS SALE



AUCTION

**WEDNESDAY, MAY 6 • 10:00 A.M. CDT
LIVE ONLINE WEBCAST (NO ONSITE BIDDING)**



JOHNFORD MDL. VMC-1600 SHD VERTICAL MACHINING CENTER



MAKINO MDL. A55/128 HORIZONTAL MACHINING CENTER



LITZ HITECH MDL. CV-1400 VERTICAL MACHINING CENTER



LITZ HITECH MDL. CV-1400 VERTICAL MACHINING CENTER

LOCATION 4

Surplus to the Ongoing Operations of
PT&R, INC.
9202 LAMBRIGHT RD.,
HOUSTON,
TEXAS 77075

By Appointment, Monday &
Tuesday, May 4 & 5 from
7:00 A.M. to 5:00 P.M. CDT.
Contact Jim Nguyen
at (408) 966-5335

VERTICAL MACHINING CENTERS

JOHNFORD MDL. VMC-1600 SHD, Mfg. 2000, Fanuc Series 18M, (4) Kurt vises, CAT 50, 32-position ATC, S/N VP0019.

(2) **LITZ HITECH MDL. CV-1400**, Mfg. 2007, Fanuc Series Oi-MC, S/N 1R0750074 and Mfg. 2007, Fanuc Series Oi-TC, S/N 1R0750072.

HORIZONTAL MACHINING CENTER

MAKINO MDL. A55/128, Professional 3 CNC control, full 4th axis, 128-tool ATC, tombstones and accessories, S/N LMO 623 (machine needs repair and is partially disassembled.)

FOR BIDDING AT THIS AUCTION: YOU MUST REGISTER TO BID IN ADVANCED FOR ONLINE BIDDING AT THIS AUCTION.
Go to www.pmi-auction.com and click on **BidSpotter** or **proxibid** on our calendar page for this auction sale.

INSPECTION: Varies by Location. See Each Location for Details.

ONLINE REGISTRATION

Register to bid at

BidSpotter or **proxibid**

1. Use the link to **Bidspotter.com** or **Proxibid.com** on PMI's website calendar.
www.pmi-auction.com **DO IT NOW!**

2. This auction may require a Cash, or credit card, or debit card, 100% refundable deposit. If by credit or debit card, it can be added through the Bidspotter.com fully secure and PCI compliant registration process and will be assessed a 100% refundable \$3,000 (US Bidder) or a \$10,000 (Foreign Bidder) deposit in order to be approved to bid online with this auction. Cash deposits can be made by wire transfer. **DON'T WAIT.** If you are unsuccessful in the auction, the refund of your credit/debit card deposit will occur shortly after the auction ends. Cash deposits will be expedited as well.

If you need assistance, don't hesitate to call (713) 691-4401.

ALL BIDS ARE SUBJECT TO AN 18% BUYER'S PREMIUM.

PARTIAL TERMS & CONDITIONS:

An 18% Buyer's Premium Will Apply.

Everything will be sold to the highest bidder or bidders for cash in accordance with the auctioneer's Customary Terms of Sale, copies of which will be posted on our website.

ALL PAYMENTS MUST BE MADE BY CASHIER'S CHECK, WIRE TRANSFER OR COMPANY CHECK WITH BANK LETTER GUARANTEEING PAYMENT TO PLANT & MACHINERY INC.

Here is an example of what your letter should be: Mr. "Customer Name" is a customer of this bank. This bank will guarantee unqualified payment to PMI on the account listed herein up to the amount of \$_____. This letter is good until June 8, 2026.

In default of payment of bills in full within the time therein specified, the Auctioneer in addition to all other remedies allowed by law, may retain all monies received as deposit or otherwise, as liquidated damages. All items must be removed by the time announced at the start of the sale.

Lots not paid for and/or removed within the time allowed may be resold at public or private sale without further notice, and any deficiency, together with all expenses and charge of resale, will be charged to the defaulting purchaser.

The buyer acknowledges that he or an agent has inspected all of the assets upon which he will be bidding and/or does purchase.

Buyer agrees to accept assets purchased "AS IS," WITH "ALL FAULTS" AND "WITH REMOVAL AT BUYER'S RISK AND EXPENSE." THE AUCTIONEER EXPRESSLY DISCLAIMS ON THE PART OF THE

AUCTIONEER AS AGENT AND THE SELLER, ANY WARRANTY AS TO FITNESS OR USABILITY OF ALL THE ASSETS, AND THE BUYER EXPRESSLY WAIVES ANY CLAIM IN RESPECT TO ANY POSSIBLE FUTURE USE OF ANY ASSET PURCHASED FOR ANY PURPOSE WHATSOEVER.

The buyer does hereby assume and does agree to indemnify and hold the auctioneer harmless from any future claim which shall pertain to the fitness or use of that asset as being purchased. Riggers, movers, electricians and buyers performing work at the Auction Site must provide PMI with evidence of insurance. The insurance coverage must be at a level acceptable to PMI and to the seller. PMI reserves the right to withdraw items, alter the order of the sale, accept bids from the seller, and group lots as it may deem appropriate. This auction may include consignment items.

Although all information has been obtained from sources deemed reliable, the auctioneer and seller make no warranty or guarantee, expressed or implied, as to the accuracy of the information herein contained, or contained in our catalog. It is for this reason that buyers should avail themselves of the opportunity to make inspection prior to the auction. Although it is not likely, auction sales are subject to cancellation or postponement. Kindly contact auctioneer prior to attendance.

These terms and conditions may be modified or supplemented by language in the catalog available at the sale site or by announcement at the start of the sale. Bidders should be attentive to those announcements and to the catalog language.