



AUCTION

17 LOCATIONS IN TEXAS & LOUISIANA

FABRICATION EQUIPMENT, CNC & MANUAL MACHINE TOOLS, GRINDERS, MATERIAL HANDLING EQUIPMENT INCL. (17) FORKLIFTS, GROVE 18 T. CRANE, PORTABLE EQUIP., BREAKOUT MACHINE, PLANT SUPPORT EQUIP., AIR COMPRESSORS, PALLET RACKING, JIB CRANES; MUCH MORE!



ESAB BURNY
PHANTOM II CNC
PLASMA/OXY
10' X 20' CAP.
CUTTING SYSTEM

**RETOFIT
2018**



TAYLOR MDL. Y-30-WO
30,000-LB. CAP.
FORKLIFT

**LARGE
CAPACITY**

INSPECTION:

Varies By
Location.
See Inside
for Details.

2013



YCM MDL.
SUPERMAX
MV106A CNC
VERTICAL
MACHINING
CENTER

**18% BUYER'S
PREMIUM
WILL APPLY**

GROVE
MDL. RT60/60F
19 T. CAP.
ROUGH TERRAIN
HYDRAULIC
TELESCOPING
CRANE



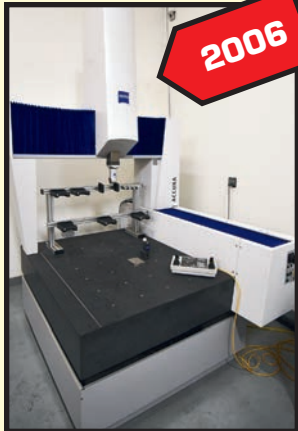
630 T.



KOMATSU
MDL. OKN-630
KNUCKLE JOINT
PRESS

Read Partial
Terms and
Conditions
on Page 11
of Brochure

2006



ZEISS ACCURA
MDL. 9/12/7
COORDINATE
MEASURING
MACHINE

**THURSDAY, DECEMBER 7
10:00 A.M.
LIVE ONLINE WEBCAST ONLY
(NO ONSITE BIDDING)**



COLE TUVE 8' X 5/8" HYDRAULIC PLATE ROLL

2007

LIVE ONLINE BIDDING ONLY (NO ONSITE BIDDING): YOU MUST REGISTER IN ADVANCE FOR ONLINE BIDDING AT THIS AUCTION. Go to www.pmi-auction.com and click on BidSpotter or proxibid on our calendar page for this auction sale.

Sale Conducted By:

PLANT & MACHINERY INC.

AUCTIONEERS • APPRAISERS • LIQUIDATORS • REAL ESTATE

Ron Moore, TX Lic. #7314, LA Lic. #0851 • PMI LA Lic. #AB-396

HOUSTON • DALLAS • ST. LOUIS

Headquarters:
1304 Langham Creek Drive, Suite 454
Houston, Texas 77084

PHONE: (713) 691-4401

FAX: (713) 672-7905

**E-MAIL: pmi@pmi-auction.com
WEBSITE: www.pmi-auction.com**

**THURS., DECEMBER 7
10:00 A.M.
LIVE ONLINE WEBCAST
ONLY (NO ONSITE BIDDING)**



BERTSCH PLATE BENDING ROLL



KOMATSU MDL. OKN-630 KNUCKLE JOINT PRESS

630 T.

PLATE BENDING ROLLS

BERTSCH PLATE BENDING ROLL, (3) 14" dia. x 126"L. rolls, S/N M-10380.

CUSTOM PLATE BENDING ROLL, 17" dia. x 10' rolls, S/N N.A.

KNUCKLE JOINT PRESS

KOMATSU MDL. OKN-630, 630 T. cap., 7.08 slide stroke, 23.62 die ht., 2.36 slide adjustment, S/N 1942201.

WHEEL PRESS

400 T. CUSTOM MADE, (needs hydraulic cylinder).

AUTOMATIC HORIZONTAL BANDSAWS

HEM MDL. H130HA-DC-4, 20" cap., 1.5" blade width, 10 HP, S/N 900605.

HYD-MECH MDL. H-12A, 12" cap., 1.25" blade width, 5 HP, S/N A0995406H.

ROBOTIC WELDERS & CONTROLLER

(4) FANUC MDL. ARCMATE 120 IB/10L, new 2003; **FANUC R-J3IB CONTROL AND POWER SUPPLY**.

LASER POWER SOURCES

FANUC LASER C4000 MDL. E, new 2005, 4,000 watt cap.

(2) AMADA FANUC AF4000E, new 2005 and 2003, 4,000 watt cap.



**(4) FANUC MDL. ARCMATE 120 IB/10L
ROBOTIC WELDERS AND CONTROLLER**

2003

LOCATION 1

Surplus to the Ongoing Operations of

**WORLD CLASS
FABRICATING FACILITY**

– LASERWELD, INC.

**1350 SCHLIPF,
KATY, TEXAS 77493**

INSPECTION: By Appointment Only.
Contact Aaron Lewis at (281) 961-7578
for Appointment.



FANUC LASER C4000 MDL. E LASER POWER SOURCE

2005



**CUSTOM
400 T.
WHEEL PRESS**

**HEM MDL. H130HA-DC-4
AUTOMATIC
HORIZONTAL BANDSAW**

**DON'T MISS
THIS SALE!**

**LIVE ONLINE BIDDING ONLY
(NO ONSITE BIDDING): YOU MUST
REGISTER IN ADVANCE FOR
ONLINE BIDDING AT THIS AUCTION.**

Go to www.pmi-auction.com
and click on

BidSpotter or **proxibid**
on our calendar page for this
auction sale.





SAMPLE VIEW OF ABELL-HOWE 5 T. WALL MOUNTED JIB CRANES



VIEW OF HYDRAULIC POWER UNITS



KOOLANT KOOLER CHILLER UNIT

FORKLIFT

TAYLOR MDL. Y-30-WO, 30,000-lb. cap. @ 24" load centers, 12'6" max. lift ht., 12'2" ht. 2-stage mast, fork positioners, new pneumatic tires, 2,050 H.O.M., S/N S-44-10079.

ELECTRIC ORDER PICKERS

(4) **CATERPILLAR MDL. NOR30P**, 3,000-lb. cap. (needs repair).

ELECTRIC NARROW AISLE REACH FORKLIFTS

(4) **CATERPILLAR MDL. NRR40**, 4,000-lb., cap. (needs repair).

ELECTRIC TOW TRACTORS

(3) **LINDE MDL. P60Z**, 6 T. towing cap. (needs repair).

WALL MOUNTED JIB CRANES

(APPROX. 20) 5 T. AND (APPROX. 20) 2 T. ABELL-HOWE W/ELECTRIC CHAIN HOISTS, some w/powerd swivel.

MATERIAL HANDLING EQUIPMENT

PIPE RACKS; CONVEYORS; ROLLER STANDS; H.D. 8' x 10' PULL CARTS; ELECTRIC CHAIN HOISTS; BRIDGE CRANE TROLLYS; MORE.

SHOP SUPPORT EQUIPMENT

GRAYCO PAINT MIXERS; GENERATOR SETS: INCL. CUMMINS GGFE-5703897, 42 KW, 3-PHASE; BALTIMORE AIR COIL AND KOOLANT KOOLERS CHILLER UNITS; INGERSOLL RAND T30 AIR COMPRESSOR; IN LINE 6 ENGINE, 75 HP; HYDRAULIC POWER UNITS: INCL. ENERPAC; (3) BLISS OBI PRESSES; SEE CATALOG FOR DETAILS.

SOLVENT RECYCLER

IST PURE MDL. SR-240, new 2015, 240 liter per hour yield, 100–390 deg. working temp.

ROTARY SCREW AIR COMPRESSORS

(2) **INGERSOLL RAND MDL. R55I-A145**, 75 HP, 300 CFM, 135 PSIG.



TAYLOR MDL. Y-30-WO 30,000-LB. CAP. FORKLIFT



(2) INGERSOLL RAND 75 HP ROTARY SCREW AIR COMPRESSORS

Surplus to the Ongoing Operations of

WORLD CLASS FAB. FACILITY – LASERWELD, INC.

1350 SCHLIPF, KATY, TEXAS 77493



IST PURE MDL. SR-240 SOLVENT RECYCLER

LOCATION 1

INSPECTION:

By Appointment Only.
Contact Aaron Lewis at
(281) 961-7578
for Appointment.

**DON'T MISS
THIS SALE!**



(4) CATERPILLAR MDL. NRR40 4,000-LB. CAP. ELECTRIC NARROW AISLE REACH FORKLIFTS

2013

2 AVAILABLE



MITUTOYO
CRYSTA
APEX C
MDL.
CRT-
AC122010
COORDINATE
MEASURING
MACHINE

YCM MDL.
SUPERMAX
MV106A
CNC
VERTICAL
MACHINING
CENTER



LOCATION 2
EUROTECH INDUSTRIES, INC.
11701 BRITTMORE PARK DRIVE, HOUSTON, TEXAS 77041
INSPECTION: By Appointment Only. Contact Jimmy Kidd (281) 507-4512 for Appointment.

CNC VERTICAL MACHINING CENTERS

(2) **YCM MDL. SUPERMAX MV106A**, new 2013, Fanuc MXP200FB (Fanuc 32i-MA) CNC control, 44" x 23.6" table, 40.2" X, 23.6" Y, 23.6" Z-axis travels, 30-pos. ATC, CAT-40, 10,000 RPM, 20 HP, through spdl. coolant w/high pressure pump, box way construction, S/N 2279, S/N 2280.

COORDINATE MEASURING MACHINES

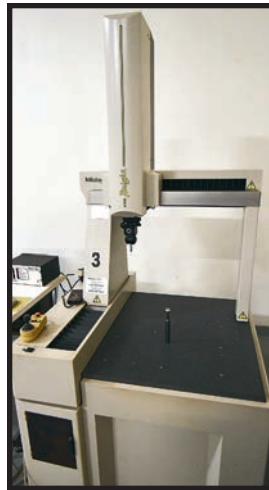
MITUTOYO CRYSTA APEX C MDL. CRT-AC122010, 47.24" X, 78.73" Y, 39.36" Z-axis travels, 117" x 86" granite tbl., thermal compensation range from 16C to 26C degrees, self-adjusting air bearings, PH10M Renishaw probe, Dell computer, S/N MC0300507.



MITUTOYO BRIGHT APEX
MDL. BRT-A710 COORDINATE
MEASURING MACHINE



ZEISS ACCURA MDL. 9/12/7 COORDINATE
MEASURING MACHINE



MITUTOYO BRIGHT
MDL. BRT-A504 COORDINATE
MEASURING MACHINE

ZEISS ACCURA MDL. 9/12/7, new in 2006, 35.4" X, 47.2" Y, 27.6" Z-axis travels, 44" x 59" tbl. size, Vast VA Rio RDS. Nr. 2589 head, Zeiss Vast probe changer, Dell computer, S/N 115368.

MITUTOYO BRIGHT APEX MDL. BRT-A710, 27.56" X, 40" Y, 23.62" Z-axis travels, 64" x 55" granite tbl., PH10T Renishaw probe, Dell computer, S/N 1584012C.

MITUTOYO BRIGHT MDL. BRT-504, 19.88" X, 15.94" Y, 15.94" Z-axis travels, PHC9 MK2 Renishaw probe, Dell computer, S/N 0346512.

**THURSDAY,
DECEMBER 7
10:00 A.M.**
LIVE ONLINE WEBCAST ONLY
(NO ONSITE BIDDING)

LOCATION 3
INDUSTRIAL MACHINE REPAIR
11407 CHARLES ROAD, JERSEY VILLAGE, TEXAS 77041
INSPECTION: By Appointment Only.
Contact Robert Brundage (713) 691-4401 for Appointment.

CNC FLATBED HOLLOW SPINDLE LATHE

CHALLENGER MDL. SL350, new 2006, GE Fanuc series Oi-TC control, 10.25" spdl. bore, 36" swing, 21" over cross slide, 120" btwn. centers, front and rear chucks, 8-pos. turret, steadyrests, chip conveyor, Royal Filter Mist FX1200, S/N 8759.



2006

DON'T MISS THIS SALE!



HYUNDAI WIA MDL. KIT-400 CNC LATHE



YAMA SEIKI MDL. GLS-150 CNC LATHE

CNC LATHES

HYUNDAI WIA MDL. KIT-400, new 2012, Fanuc i Series control, collet chuck, 6-station turret, 1.77" bar cap., 15.8" X, 9.8" Y-axis travels, 20.1" max. swing, 10.6" max. turning length, 3-jaw pwr. chuck and collets, S/N G3XA3-0749.

YAMA SEIKI MDL. GLS-150, new 2008, Fanuc Oi Mate-TC, 2" bar cap., 14.17" max. turning dia., 19.68" max. turning length, 15/20 HP, 60–6,000 RPM, chip conveyor, S/N 891103.

2ND OPERATION LATHES

HARDINGE MDL. DV-59/DSM-59, 9" swing x 36" btwn. centers, turret and cross slide, collet chuck, 1 HP.

JET MDL. PTL-59, 6-pos. turret, cross slide, collet chuck, 2 HP, S/N 700607.

MILL/DRILL

GRIZZLEY MDL. G0759, new 2020, 7" x 27" tbl. size, DRO and stand, 1 HP, S/N 20200488.

HORIZONTAL MILLS

REPUBLIC LAGUN MDL. F-900, 6-1/2" x 25-1/2" tbl. size, 75–1,920 RPM.

NICHOLS PRODUCTION MILL, 8.5" x 30" tbl. size, 1.5 HP.

AUTOMATIC SCREW MACHINES

TRAUB MDL. A42, 1–58" cap., double cross slides, S/N 4079.

TRAUB MDL. A25, 1" cap., double cross slides, S/N 03195.

TURRET LATHE

HERBERT MDL. NO. 0, cross slide and turret, S/N 4110202.

RAW MATERIAL W/CERTS

INCONEL: BMS-A137 BMS-A139, BMS-A123, assorted lengths and dia.s. See catalog for details.

SHOP SUPPORT EQUIPMENT

INGERSOLL RAND MDL. 242 7.5 HP RECIPROCATING AIR COMPRESSOR, w/Speedaire air dryer; **HITACHI SB 10Y BELT AND DISC GRINDER**; **CENTRAL MACHINERY 6" TOOL GRINDER**; **ARBOR PRESSES**; **AVERY WEIGHT-TRONIX PC-902 DIGITAL COUNTING SCALE**; **2 T. ENGINE HOIST**; **LATHE TOOLING**: Boring bars and turning tools, collet chucks; **PRECISION MACHINE ACCESSORIES**: Die heads, live and dead centers, vises and more!

LOCATION 4

STAR MACHINE WORKS

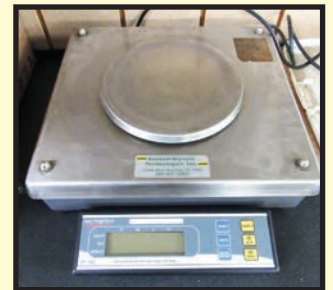
150 ROBIN DRIVE, LIVINGSTON, TEXAS 77351

INSPECTION: By Appointment Only.

Contact Tory Auclair (832) 866-4311 for Appointment.



GRIZZLEY MDL. G0759 MILL/DRILL



AVERY WEIGH-TRONIX DIGITAL COUNTING SCALE



CENTRAL MACHINERY 6" TOOL GRINDER

DON'T MISS THIS SALE!



JET MDL. PTL-59 2ND OPERATION LATHE



HARDINGE MDL. DV-59/DSM-59 2ND OPERATION LATHE

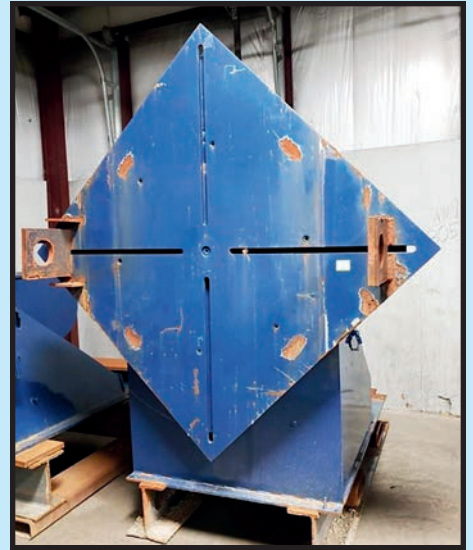


HERBERT MDL. NO. 0 TURRET LATHE



2007

COLE TUVE 8' X 5/8" HYDRAULIC PLATE ROLL



ARONSON 37,000-LB. 3-PIECE HOLLOW SPINDLE WELDING POSITIONING SYSTEM

LOCATION 5
 Surplus to the Ongoing Operations of
PINPOINT MACHINE
19995 HWY. 167, DRY PRONG, LOUISIANA 71423
INSPECTION: By Appointment Only, Tuesday & Wednesday, December 5 & 6.
 Contact Richard Rodgers (318) 290-3296 for Appointment.

HYDRAULIC PLATE ROLL
COLE TUVE 8' X 5/8" MDL. 4RS 8-280, new 2007, 8' x 5/8" mild steel cap., 100.4"L. roll, 11" top roll, 25 HP motor, Siemens electrical, induction hardened rolls, 5-16.5 FPM rolling spd., movable control stand, fully hyd. w/hyd. drop end. (control needs service).

DIESEL POWERED HYDRAULIC UNIT
BAYOU CITY HYDRAULIC UNIT, 80 gal. hyd. tank, 34 gal. diesel tank, 3-cylinder diesel driving gear pump, quick connectors for output/return to workload, S/N 488-H03205.



PANDJIRIS HS30 HEADSTOCK WELDING POSITIONING SYSTEM

DON'T MISS THIS SALE!

WELDING POSITIONING SYSTEMS
PANDJIRIS HS30 HEADSTOCK, 6,000-lb. cap., 120 v., 3-phase, 3 HP motor, tailstock face plate 19" dia. w/(4) each 11/16" T-slots 5-1/4"L. w/ opening for bolt head, 2-15/16" shaft sizes, bearings are good, 60" center ht. from floor, remote control pendant w/approx. 30' of operating cord, variable forward and reverse spds. up to 1 RPM, footprint of headstock 72" high, 25" front to back and 35"W., footprint of tailstock 72"H., 25"W. and 25" front to back, S/N 10281E00.

ARONSON 37,000-LB. 3-PIECE HOLLOW SPINDLE, headstock end w/12" spdl. hole has face plate w/1-1/4" T-slots, 54" sq., headstock has a plate welded to its face from last job it was set up to work, underneath it is a regular welding positioner face plate, plate is removable, 12" hollow spdl. in main driven headstock, max. rotatable torque 40,000-lb. inch, rated 37,000-lbs. at 6" to 11,000-lbs. at 60", face is 54" sq. w/1-1/4" T-slots, S/N 7465. Tailstock description: 59" sq. w/1" T-slots. Steadyrest description: capable of supporting a shaft or pipe protruding from end of work-piece, but no rating tag has been found. Handles approx. 5-6" piece on its rollers, has thrust bearing to bear the thrust of a flange or other flat surface.



KEMPSMITH HORIZONTAL UNIVERSAL MILLING MACHINE



BAYOU CITY DIESEL POWERED HYDRAULIC UNIT



BROWN & SHARPE DYNAMASTER 303 VERTICAL MILLING MACHINE



LION LIFTALL 18,000-LB. CAP. GASOLINE FORKLIFT



HYSTER 5,000-LB. CAP. GASOLINE FORKLIFT



PHILADELPHIA TRAMRAIL 60" CAP. BALER



CARLTON 6' GRAY RADIAL DRILL



LAPOINTE BROACHING MACHINE



ECONOLINE BLAST CABINET



ZERO BLAST CABINET

UNIVERSAL MILLING MACHINE
KEMPSMITH HORIZONTAL MILL, type 3 universal (tbl. swivels), 11.5" x 57" tbl., coolant, 50 taper, 18–575 RPM, .5-200" per min feed, (taken from service April 2023).

VERTICAL MILLING MACHINE
BROWN & SHARPE DYNAMASTER 303, 460 v. 3-phase pwr., 50 taper spdl., 40–1,530 RPM, 5/8" T-slots, 13" x 60" tbl., pendant control.

RADIAL DRILL
CARLTON 6' GRAY, w/"L" base for twin job placement, 480 v., 3-phase, S/N 4A 3009.

BROACHING MACHINE
LAPOINTE BROACHING MACHINE, 115 v. single phase pwr., (2) broaches included, ball screw operation.

BLAST CABINETS
ZERO, single phase, suction type, inboard workspace lighting, carbide nozzle.
ECONOLINE, pressure vessel type w/foot control, carbide nozzle, lighted from exterior, single operator type.

FORKLIFTS
LION LIFTALL 18,000-LB. CAP. MDL. HT 180, International UC 263 6-cylinder gasoline engine w/new electronic ignition, 8' forks, independent positioners to move forks from the cab, 6' of free lift, 20' lift ht., twin cylinder steering, enclosed cab, tubeless type tires, triple mast, made in USA and still supported, S/N 7558 (brakes need repair).
HYSTER 5,000-LB. CAP. MDL. H50XM, new 2003, GM 4-cylinder gasoline engine, side shift, 64" of free lift, 11' lift ht., parking brake, triple mast, pneumatic tires, S/N H177B42983A

BALER
PHILADELPHIA TRAMRAIL 60" CAP., 10 HP motor, 6" cylinder, 230 v. 3-phase, heavy duty version w/turnbuckle latch on door (recently unhooked from pwr.).

LOCATION 5

INSPECTION: By Appointment Only, Tuesday & Wednesday, December 5 & 6.
 Contact Richard Rodgers (318) 290-3296 for Appointment.



BAKER HUGHES INTEQ MDL. POWER TORQUE III BREAKOUT MACHINE



GROVE MDL. RT60/60F 18 T. CAP. ROUGH TERRAIN HYDRAULIC TELESCOPING CRANE

LOCATION 6
 Surplus to the Ongoing Operations of
**PRECISION WELDING
 & FABRICATION**
**407 MIDLAND DRIVE,
 HOUSTON, TEXAS 77037**
INSPECTION: Tuesday & Wednesday,
 December 5 & 6, from 9:00 A.M. to 4:00 P.M.



SNORKEL MDL. A60R TELESCOPING BOOM TYPE MANLIFT

ROUGH TERRAIN HYDRAULIC TELESCOPING CRANE

GROVE MDL. RT60/60F 18 T. CAP., diesel, meter 18,275, H.O.M. 3,221, 3 section boom, Johnson 12" block, outriggers, one tire is flat, dash mounted Supreme RAYCO system, S/N N.A.

FORKLIFTS

CLARK 12,000-LB. (EST.) CAP., Perkins diesel, 1,005 H.O.M., split forks, 2-stage mast, approx. 10' in down pos., dual front pneumatic tires, single rear steering tires, S/N N.A. (out of service).

HYSTER 10,000-LB. (EST.) CAP., LPG, pneumatic tires front and rear, 3' forks, side shift, 82" 2-stage mast, Monotrol control, S/N N.A. (bottle not included).

ALLIS CHALMERS 4,000-LB. CAP MDL. ACC-40LTS, LPG, 3' forks, 2-stage mast, approx. 70" tall, 5,178 H.O.M., S/N ADJ127929 (out of service?)

TELESCOPING BOOM TYPE MANLIFT

SNORKEL LIFT MANLIFT MDL. A60R, LPG, 60' max. ht. platform, 50" x 92" pulpit, pneumatic tires, 4,627 H.O.M., S/N 863480686.

TRAILER MOUNTED PORTABLE AIR COMPRESSOR

INGERSOLL RAND MDL. P185WJD PORTABLE AIR COMPRESSOR, John Deere diesel engine, 100 PSI, 185 CFM, 37 gal. tank.

BREAKOUT MACHINE

BAKER HUGHES INTEQ MDL. POWER TORQUE III, heavy duty hydraulic design, automatic or manual operation, skid mounted.

TEST EQUIPMENT

CUSTOM VIBRATORY TEST STAND, vibrating motors in base; **PORTABLE PRESSURE TEST UNIT**, Gulf Coast Tool, Mdl. TPWA 10,000, max. pressure of 10,000 PSI, solid tires, S/N 511007; **MORE.**

MATERIAL HANDLING EQUIPMENT

(2) LARGE CAP. SPREADER BARS: (1) Gaffey, 7.5 T. cap., 27'L., (1) approx. 22'L.; **CRANE HOIST**, 1 T. cap., wire cable type; **SCREW TYPE JACK STANDS; MANUAL CHAIN HOIST**, 1 T. cap.; **PALLET OF ELECTRIC CHAIN HOISTS**, 1/2 T. and 1 T. cap.; **SPANMASTER HOIST SYSTEM;** **(3) H.D. WORK STANDS:** (2) on steel wheels, approx. 3 x 3 surface, w/H.D. rigid pipe vises; **WIRE SLINGS AND LIFTING CHAINS; 48" TURNTABLE; (6) 4 X 4 BALL TYPE FEED TBLS.;** **PALLET JACKS; LIFTING STRAPS; MISC. CARBON STEEL SLOTTED CART; LARGE BLUE H.D. SAWHORSE; LIFTING FRAME, SELFORTH; TBL. FRAME**, w/rotating positioner, 5 x 3 w/rolling skate wheels; **CYLINDRICAL PARTS TURNING SYSTEM**, Wood's spd. control, 2 T. cap. custom part feed mechanism, w/adj. length integrated system; **PALLET RACK UPRIGHTS AND ARMS** (inside back building); **JACK STANDS, MAX JAX; PORTABLE GANTRY CRANE** (missing bridge); **LARGE JOB BOX; MORE.**

FITTINGS, FLANGES & PARTS

PALLETS OF ASSORTED SIZED FLANGES, CARBON STEEL; (2) PALLETS OF HENDERSON TOOL CO. MUD FITTINGS (ORANGE); (2) CRATES OF MISC. HOSE AND WIRING; LARGE LOT OF MISC. GALVANIZED PIPE; CRATE OF ASSORTED NUTS, BOLTS AND CONTENTS; LARGE BAGS OF VARIOUS CAP. PLASTIC TYPE CAPS, etc. (approx. 8-9); **MORE.**



CLARK 12,000-LB. (EST.) CAP. FORKLIFT



PIRANHA MDL. T50 HTC HYDRAULIC IRONWORKER



4" X 4" (EST.) CAP. ANGLE ROLL



LARGE CAP. STEEL WHEEL TANK TURNING ROLL SETS



SAMPLE VIEW OF MISSOURI MULE STYLE TURNING ROLLS



HYPERTHERM MDL. HT2000 PLASMA POWER SOURCE

MISCELLANEOUS MACHINERY & ACCESSORIES

(3) **HYDRAULIC IRONWORKERS: PIRANHA**, Mdl. T50, HTC, w/shear and punch; **CLAUSING MDL. METAL MUNCHER**; **TANNEWITZ VERTICAL BANDSAW**, 36" throat, approx. 36" x 36" tbl., utilizes hydraulic pwr. unit w/Reeves gear drive for the pwr. source for saw motor; **PLATE ROLL, 6'L. CAP.**, mfg. unknown; 6" x 6" (est.) cap. angle roll, electric motor driven hydraulic unit that drives gear box to pwr. the main gear package, Link Belt helical gear drive; **48" ELECTRIC SLIP ROLL** (on rolling stand); **PEDESTAL MOUNTED PUNCH, ROPER WHITNEY; (10+) HYDRAULIC POWER UNITS**: up to 30 HP, incl. Easterline Whitney; **ASSORTED ENGINE LATHE CHUCKS**: 12" hole 4-jaw, 10" hole 4-jaw, 6" hole 3-jaw; **3-JAW SUPER SPACER; PEDESTAL BASE 6" VISE; 4 X 4 CRATE W/ ELECTRIC POWER TOOLS; PORTABLE HIGH-PRESSURE PUMP; COMBINATION BELT DISC GRINDER**, 12" disk, 6" belt; **MORE.**

PLANT SUPPORT EQUIPMENT & M.R.O. STOCK

(2) **EZ GO ELECTRIC GOLF CARTS**, 2-seater, w/truck type bed; **FUEL TANK**, w/Lincoln pump; **RYOBI RIDING LAWN MOWER**, 42" cut, Kohler Courage 19 gasoline engine; **FUEL TANK**, 515 gal. cap. w/spill containment skid; (2) **500 GAL. PLASTIC WATER TANKS**; (APPROX. 20) **ASSORTED SMALL AIR MANIFOLDS; PALLET RACK UPRIGHTS AND ARMS**, assorted sizes; **LARGE CAP. HIGH VELOCITY SHOP FAN**, approx. 5' dia., frame mounted w/tilt feature; **MISC. GALVANIZED FENCING PARTS AND BARBED WIRE**; **LARGE LOT OF 12" X 12" X 48"L. WHITE GRANITE BLOCKS; WIRE CABLE; SET OF 18'L. HEAVY DUTY RAW MATERIAL PIPE/BAR STOCK STORAGE RACKS**; (2) **FEED RACKS**, yellow, custom; (APPROX. 24) **FIRE EXTINGUISHERS** (in crate); **RETRACTABLE CORD HOSE REEL**; (APPROX. 24) **MERCURY VAPOR LIGHT FIXTURES, COOPER LIGHTING**, 0-450 watts, also can wire for 1,000 watts; (APPROX. 12) **LIGHT FIXTURES, COOPER LIGHTING MDL. MPF540-OR**, 400 watts, Mercury vapor type; **ASSORTED ELECTRICAL TRANSFORMERS**: 112 KVA, 50 KVA, 30 KVA and 27 KVA; **PANEL W/ ELECTRICAL CONTROLS; ROLLING DISPENSER CART**, w/tubing and hanging part box dispenser; **WIRE GUIDE NET ON 4 X 4 TBL.**; (3) **WATER FOUNTAINS**; (3) **LARGE CRATES OF ELECTRICAL CABLE; FANEX HEAT EXCHANGER; CABLE FEED TRAYS; ICE O'MATIC ICE MAKER; MORE.**

WELDING POWER SOURCES & ACCESSORIES

SEVERAL LARGE CAP. TANK TURNING ROLL SETS, w/Radicon gear boxes, 24"L. x 18" dia. rolls, (1) driver., (2) idlers, set of accessory rolls, set of Radicon powered drive wheels, double steel wheel rollers, side by side, also some supplemental accessories, spare sets of H.D. cap. Radicon gear boxes, and more; **MOUNTING PLATES THAT GO W/THE ELEVATED TURNING ROLLS** (above), **BOX OF DRIVE SHAFTS, ETC. (TO BE INCLUDED)**; (APPROX. 100) **WELDING POWER SOURCES**: Miller DC 1,000 amp, Miller Syncrowave 300, Lincoln, Idealarc, Tigs 300; Miller Delta 451, Idealarc 250, SR 150, Lincoln Idealarc DC 400, R3S 600, DC 400, Pulse Power 500, Esab GMA 800 w/feeder; (10) **LINCOLN BULLET WELDERS**; **MILLER MDL. MR5 5-AXIS ROBOTIC WELDER**; **LINCOLN SHIELDARC SAE-300 PORTABLE WELDING MACHINE**, diesel; (2) **LARGE PANDJIRIS WELDING HEAD STOCKS; POWER AND IDLER TANK TURNING ROLLS**, assorted sizes and capacities (some need service); (10+) **PROFAX MDL. TR-1500 TANK TURNING ROLLS**, 750-lb. cap., variable spd., mounted on 3' tall frames, matching idlers; **H&S PIPE BEVELER IN CARRYING CASE; MISSOURI MULE DRIVER AND IDLER TANK TURNING ROLL SET; 6' X 3' PLATFORM W/TWIN DRUM TURNABLES FOR FEEDING WELDING WIRE; LINCOLN LN7 WIRE FEEDER; EXTRA LARGE CAP. PIPE BEVELING AND CUTTING TORCH SYSTEM; ARONSON WELDING POSITIONER**, w/3" x 3" tbl.; **RANSOM WELDING POSITIONER**, size B2.5, 250-lb. cap., pwr. turning and manual tilt (on rolling cart); **MILLER MDL. MILLERMATIC 10-E WIRE FEEDER; LINCOLN LN7 WIRE FEEDER; LINDE WIRE FEEDERS; INVINCIBLE FLUX VACUUM; ASSORTED ARCO WAND FLUX VACUUM RECOVERY UNITS; ROLLING OXY SETTling BOTTLE CUTTING CART; PLASMA POWER SOURCE, HYPERTHERM MDL. HT2000, SPOOL #2000-005093; WELD ENGINEERING MDL. MIGHTY MAX VACUUM, FOR FLUX RECOVERY SYSTEM**; (2) **LINCOLN WIRE FEEDERS**, Mdl. LN9; (3) **LINCOLN WELD CONTROLS**; **RANSOM MANIPULATOR; LINCOLN WELD CONTROLLERS**, Mdl. NA-5R and NA-5; **PORTABLE WELDING POSITIONER**, small; **PORTABLE WELDING MANIPULATOR; OXY ACET. TORCH CART; BANDING CART; MORE.**

LOCATION 6

Surplus to the Ongoing Operations of

PRECISION WELDING & FABRICATION

407 MIDLAND DRIVE, HOUSTON, TEXAS 77037

INSPECTION:

Tuesday & Wednesday,
December 5 & 6, from
9:00 A.M. to 4:00 P.M.

**DON'T
MISS
THIS SALE!**



PORTABLE TEST UNIT



36" THROAT TANNEWITZ VERTICAL BANDSAW



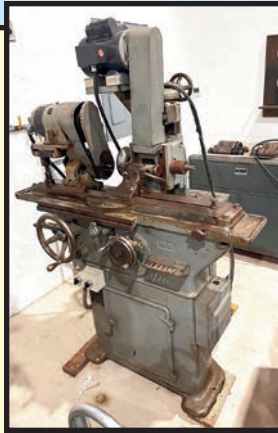
MILLER MDL. MR5 5-AXIS ROBOTIC WELDER



SAMPLE VIEW OF WELDERS



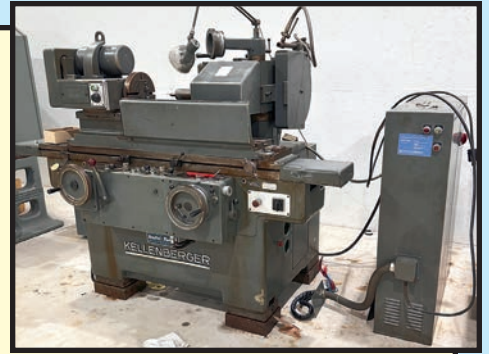
MOORE JIG GRINDER



BROWN & SHARPE NO. 13 TOOL AND CUTTER GRINDER



ELB 10" X 18" SURFACE GRINDER



KELLENBERGER MDL. 600U UNIVERSAL GRINDER

GRINDING MACHINES

KELLENBERGER MDL. 600U UNIVERSAL GRINDER, 13" swing, 23-5/8" btwn. centers, 27" longitudinal tbl. travel, 11 deg. tbl. swivel, S/N 743.

MOORE MDL. NO. 3 JIG GRINDER, 11" x 24" tbl. size.

MOORE MDL. NO. 2 JIG GRINDER, 10" x 19" tbl. size, S/N 7214.

BROWN & SHARPE MDL. NO. 13 TOOL AND CUTTER GRINDER.

BROWN & SHARPE MDL. NO. 5 PLAIN CYLINDRICAL GRINDER, 3" x 18" max. work piece dia.

ELB SURFACE GRINDER, 10" x 18" electromagnetic chuck.

SIZE CONTROL CO. MDL. 200 CENTERLESS LAPPING MACHINE, S/N 200104.



BROWN & SHARPE MDL. NO. 5 PLAIN CYLINDRICAL GRINDER



SIZE CONTROL CO. CENTERLESS LAPPING MACHINE

LOCATION 7 SMEDING DIESEL LLC 17 TRUSS DR., BOERNE, TX 78006

INSPECTION:

By Appointment Only.
Contact Ben Smeding
(830) 331-0588 for
Appointment.

LOCATION 8 DALLAS AREA STORAGE FACILITY 2120 NORTH LOOP 12, IRVING, TEXAS 75061

INSPECTION: Monday & Tuesday, December 4 & 5,
9:00 A.M. to 4:00 P.M. Each Day.

FORKLIFTS

CLARK 15,500-LB. BASE CAP. MDL. CMP70D, diesel engine, 127" 2-stage mast, 173" lift ht., side shift, pneumatic tires, 96" forks, S/N CMP570D-6293-6882KF.

CATERPILLAR 12,000-LB. BASE CAP. MDL. T120C, LPG engine, 72" 2-stage mast, 80" lift ht., cushion tires, 72" forks, S/N 18N666.

TOYOTA 10,000-LB. BASE CAP. MDL. 8FD45U, new 2014, diesel engine, 99" 3-stage mast, 218" lift ht., side shift, pneumatic tires, 48" forks, S/N 10165.

TOYOTA 8,000-LB. BASE CAP. MDL. 8FD35U, new 2018, diesel engine, 89" 3-stage mast, 187" lift ht., side shift, pneumatic tires, 6,044 H.O.M., 48" forks, S/N 12154.

TOYOTA 6,000-LB. BASE CAP. MDL. 8FDU30, new 2014, diesel, 84" 3-stage mast, 187" lift ht., side shift, pneumatic tires, 48" forks, S/N 60499.

CATERPILLAR 5,000-LB. BASE CAP. MDL. 2C5000, LPG engine, 83" 3-stage mast, 187" lift ht., side shift, cushion tires, 42" forks, S/N AT9002757.



CLARK 15,500-LB. BASE CAP. DIESEL FORKLIFT



TOYOTA 6,000-LB. BASE CAP. DIESEL FORKLIFT



CAT 5000-LB. BASE CAP. LPG FORKLIFT



TOYOTA 8,000-LB. BASE CAP. DIESEL FORKLIFT

**DON'T MISS
THIS SALE!**

2014



MAC 12,000-LB. BASE CAP. UTILITY TRAILER

LOCATION 9

Surplus to the Ongoing Operations of

FABCORP, INC.

**6951 WEST LITTLE YORK ROAD,
HOUSTON, TEXAS 77040**

INSPECTION: By Appointment Only.

Contact Jeff Niemann (832) 309-4087 for Appointment.



WELLS CARGO MOTOR TRAC CARGO TRAILER

A/C W/
GENERATOR



40'L. X 8'W. GOOSENECK TRAILER

CLIMATE CONTROLLED CARGO TRAILER

WELLS CARGO MOTOR TRAC, 28'L. x 8'W., tandem axle, (2) AC units, 8 kW Onan on board diesel generator w/fuel tank, rear door ramp, full cabinets throughout.

GOOSENECK TRAILER

40'L. X 8'W., (2) 15,000-LB. CAP. AXLES.

UTILITY TRAILER

MAC 12,000-LB. BASE CAP. MDL. 226, new in 2014, dual axle, 235/80/R16 tire size, VIN 1M9PT1721EB618097 (no title).

VOIP DESK PHONES

(50+) CISCO VOIP DESK PHONES, Mdl. 7945G (recently removed from service).



CISCO VOIP DESK PHONE

17 LOCATIONS IN TEXAS & LOUISIANA

FABRICATION EQUIPMENT, CNC & MANUAL MACHINE TOOLS, GRINDERS, MATERIAL HANDLING EQUIPMENT INCL. (17) FORKLIFTS, GROVE 18 T. CRANE, PORTABLE EQUIP., BREAKOUT MACHINE, PLANT SUPPORT EQUIP., AIR COMPRESSORS, PALLET RACKING, JIB CRANES; MUCH MORE!

THURSDAY, DECEMBER 7 • 10:00 A.M.
LIVE ONLINE WEBCAST ONLY (NO ONSITE BIDDING)

LIVE ONLINE BIDDING ONLY (NO ONSITE BIDDING): YOU MUST REGISTER IN ADVANCE FOR ONLINE BIDDING AT THIS AUCTION. Go to www.pmi-auction.com and click on BidSpotter or proxibid on our calendar page for this auction sale.

INSPECTION:
Varies By Location.
See Inside for Details.

DON'T MISS THIS SALE

ONLINE REGISTRATION

Register to bid at

BidSpotter or **proxibid**

1. Use the [link to Bidspotter.com](http://www.bidspotter.com) or [Proxibid.com](http://www.proxibid.com) on PMI's website calendar. www.pmi-auction.com DO IT NOW!

2. This auction may require a Cash, or credit card, or debit card, 100% refundable deposit. If by credit or debit card, it can be added through the Bidspotter.com fully secure and PCI compliant registration process and will be assessed a 100% refundable \$3,000 (US Bidder) or a \$10,000 (Foreign Bidder) deposit in order to be approved to bid online with this auction. Cash deposits can be made by wire transfer. **DON'T WAIT.** If you are unsuccessful in the auction, the refund of your credit/debit card deposit will occur shortly after the auction ends. Cash deposits will be expedited as well.

If you need assistance, don't hesitate to call (713) 691-4401.

ALL BIDS ARE SUBJECT TO AN 18% BUYER'S PREMIUM.

PARTIAL TERMS & CONDITIONS:

An 18% Buyer's Premium Will Apply.

Everything will be sold to the highest bidder or bidders for cash in accordance with the auctioneer's Customary Terms of Sale, copies of which will be posted on our website.

ALL PAYMENTS MUST BE MADE BY CASHIER'S CHECK, WIRE TRANSFER OR COMPANY CHECK WITH BANK LETTER GUARANTEEING PAYMENT TO PLANT & MACHINERY INC.

Here is an example of what your letter should be: Mr. "Customer Name" is a customer of this bank. This bank will guarantee unqualified payment to PMI on the account listed herein up to the amount of \$_____. This letter is good until January 8, 2024.

In default of payment of bills in full within the time therein specified, the Auctioneer in addition to all other remedies allowed by law, may retain all monies received as deposit or otherwise, as liquidated damages. All items must be removed by the time announced at the start of the sale.

Lots not paid for and/or removed within the time allowed may be resold at public or private sale without further notice, and any deficiency, together with all expenses and charge of resale, will be charged to the defaulting purchaser.

The buyer acknowledges that he or an agent has inspected all of the assets upon which he will be bidding and/or does purchase.

Buyer agrees to accept assets purchased "AS IS," WITH "ALL FAULTS" AND "WITH REMOVAL AT BUYER'S RISK AND EXPENSE." THE AUCTIONEER EXPRESSLY DISCLAIMS ON THE PART OF THE

AUCTIONEER AS AGENT AND THE SELLER, ANY WARRANTY AS TO FITNESS OR USABILITY OF ALL THE ASSETS, AND THE BUYER EXPRESSLY WAIVES ANY CLAIM IN RESPECT TO ANY POSSIBLE FUTURE USE OF ANY ASSET PURCHASED FOR ANY PURPOSE WHATSOEVER.

The buyer does hereby assume and does agree to indemnify and hold the auctioneer harmless from any future claim which shall pertain to the fitness or use of that asset as being purchased. Riggers, movers, electricians and buyers performing work at the Auction Site must provide PMI with evidence of insurance. The insurance coverage must be at a level acceptable to PMI and to the seller. PMI reserves the right to withdraw items, alter the order of the sale, accept bids from the seller, and group lots as it may deem appropriate. This auction may include consignment items.

Although all information has been obtained from sources deemed reliable, the auctioneer and seller make no warranty or guarantee, expressed or implied, as to the accuracy of the information herein contained, or contained in our catalog. It is for this reason that buyers should avail themselves of the opportunity to make inspection prior to the auction. Although it is not likely, auction sales are subject to cancellation or postponement. Kindly contact auctioneer prior to attendance.

These terms and conditions may be modified or supplemented by language in the catalog available at the sale site or by announcement at the start of the sale. Bidders should be attentive to those announcements and to the catalog language.



CONEX BOXES

CONEX BOXES
(1) 40' HIGH CUBE; (1) 40' STANDARD.

HORIZONTAL BANDSAW

HEM MDL. SIDEWINDER AUTO., 12" x 16" cap., 3 HP, S/N 677799.

PRECISION MANUAL SURFACE GRINDER

BIRMINGHAM MDL. WSG-618, 6" x 18" tbl. size, manual operation, S/N 00124.

SHOP SUPPORT EQUIPMENT

LOT OF COLLAPSIBLE METAL BASKETS.



HEM MDL. SIDEWINDER AUTO. BANDSAW



COLLAPSIBLE METAL BASKETS



BIRMINGHAM MDL. WSG-618 PRECISION MANUAL SURFACE GRINDER

LOCATION 10

METAL SAWING TECHNOLOGIES

9502 E. HARDY,
HOUSTON, TEXAS 77093

INSPECTION: By Appointment Only.
Contact Ken Oyer (713) 697-1605
for Appointment.

LOCATION 11

Surplus to the Ongoing Operations of

HIPPO HOPPER

27807 RED FOX ROAD, TOMBALL, TEXAS 77377

INSPECTION: By Appointment Only.

Contact Barry Woods (832) 456-4561 for Appointment.

**THURSDAY, DECEMBER 7
10:00 A.M.**

LIVE ONLINE WEBCAST ONLY (NO ONSITE BIDDING)

IRONWORKER

PIRANHA MDL. P11 88, 88 T. cap., 1-1/16" through 1" plate, 9" throat depth, 1/4" through 1-1/2" round bar shear, 8" x 3/4" flat bar shear, 5" x 5" x 3/8" angle shear, 10 HP, S/N 240.

FORKLIFTS

TOYOTA 5,000-LB. BASE CAP. MDL. 7FGCU25, LPG, 3-stage mast, 189" lift ht., side shift, solid tires, S/N 65142

TOYOTA 6,000-LB. BASE CAP. MDL. 7FGCU32, LPG, 2-stage mast, 131.5" lift ht., side shift, solid tires, S/N 68429 (parts machine).

SELF DUMPING HOPPERS

(6) HIPPO HOPPERS.



PIRANHA MDL. P11 88 IRONWORKER



TOYOTA 5,000-LB. BASE CAP. LPG FORKLIFT



VIEW OF SELF DUMPING HOPPERS

LOCATION 12

Surplus to the Ongoing Operations of

LAND & SEA

101 E. AVENUE M., CONROE, TEXAS 77301

INSPECTION: By Appointment Only. Contact LC Dowling (832) 296-0517 or ldowling@landseaind.com for Appointment.



ESAB BURNY PHANTOM II
CNC PLASMA/OXY
10' X 20' CAP.
CUTTING SYSTEM

GEKA HYDRACROP-70
IRONWORKER

CNC PLASMA/OXY CUTTING SYSTEM

ESAB BURNY PHANTOM II, Kalibur control (2018 retrofit), oxy head, 10' x 20' burn tbl., (2) Thermal Dynamics Merlin 6000 pwr. sources.

IRONWORKER

GEKA HYDRACROP-70, 70 T. cap., 5" x 5" x 1/2" angle cap., 18" x 5/8" flat shear cap., 1-3/4" round shear cap., S/N 1171.

WELDING MACHINES

LINCOLN IDEALARC DC-1500, S/N U1020619134; LINCOLN IDEALARC DC-400, new 2012, S/N U1121004279, w/LF72 wire feeder; LINCOLN DC400, new 2008, S/N U1080900779, w/LF72 wire feeder; LINCOLN CV400, S/N U1960512888; LINCOLN CV-305, S/N U106061011, w/LF72 wire feeder; LINCOLN 275 PRECISION TIG, new 2014, S/N U1140701860; LINCOLN CV-305, S/N U1130506041, w/LF72 wire feeder.

MULTI PORT INDUCTION HEATER

PDS BARTECH, INC. MDL. PCE-630/12, new 2011, S/N 11-1613.

TANK TURNING ROLLS

WELDWARE 10 T. DIVER AND IDLER, S/N 131562; WELDWARE 3 T. DRIVER AND IDLER, S/N 11126; WELDWARE 3 T. DRIVER AND IDLER, S/N 11135; (2) WEBB IDLERS; (2) WEBB 3-ROLL IDLERS; WELDWARE TURNING ROLL FRAME SET (no wheels); (3) WELDWARE 3 T. DRIVE UNITS (2); (2) IDLERS (APPROX. 10 T.).

ELECTRIC FORKLIFT

HYSTER 4,500-LB. BASE CAP. MDL. E45XM, 3-stage mast, 218.5" lift ht., solid tires, battery charger, S/N F018V16060W (battery needs replacing).

SOLVENT RECOVERY SYSTEMS

SIDEWINDER MDL. M2; SAFTEY-KLEEN MDL. 710.3 MINIMIZER.

HEAT EXCHANGER

TRANTRER SUPERCHANGER MDL. GXD-042-L-6-NR-37, MAWP 125 PSI @260 deg. F.

ROTARY SCREW AIR COMPRESSORS

SULLAIR MDL. LS16-75HA/SUL, 75 HP; SULLAIR MDL. 3700, 50 HP, 250 ACFM @ 100 PSIG.

PORTABLE DIESEL POWERED COMPRESSOR

SULLIVAN.

WATER TREATMENT SYSTEM

WATER MAZE, Compact CoAg Mdl. 1.130-510.0 coagulation unit, pump, filtration system, associated tanks and accessories. (Conex not included).



WATER MAZE COMPACT COAG
WATER TREATMENT SYSTEM

DON'T MISS THIS SALE!



LINCOLN 275 PRECISION TIG WELDER



PDS BARTECH, INC. MULTI PORT
INDUCTION HEATER



HYSTER 4,500-LB. BASE CAP.
ELECTRIC FORKLIFT



SULLAIR MDL. 3700 ROTARY SCREW
AIR COMPRESSOR



RETROFIT
2018

2014



**AMADA
MDL. RG-80 CNC
PRESS BRAKE**

**DON'T
MISS
THIS
SALE!**

**CINCINNATI
MDL. 135 CB X 10'
CNC PRESS BRAKE**



VIEW OF PRESS BRAKE DIES



PROFAX WELDING POSITIONER

LOCATION 13
Surplus to the ongoing operations of
PITTS BY JJ
3426 HOPPER ROAD, HOUSTON, TEXAS 77093
INSPECTION: By Appointment Only.
Contact Jose (713) 206-9587 or Appointment.

CNC PRESS BRAKES
CINCINNATI MDL. 135 CB X 10', 135 T. x 10', 8" stroke, Autobend 7 control w/CNC backgauge, S/N 42478.
AMADA MDL. RG-80, 80 T. x 8', 86" btwn. housings, 3.94" stroke, Autobend 7 w/CNC backgauge.
WELDING POSITIONERS
(2) PROFAX MDL. WP-250, S/N WP-2552, WP-2552.

THURSDAY, DEC. 7 • 10:00 A.M.
LIVE ONLINE WEBCAST ONLY (NO ONSITE BIDDING)

LOCATION 14
At the Premises of
MEI RIGGING & STORAGE
13500 JOHN F KENNEDY BLVD.,
HOUSTON, TEXAS 77039
INSPECTION: By Appointment Only.
Contact Richard at (979) 534-6100 or
ops-tx@machinestation.us for Appointment.

FORKLIFT
HYSTER 70,000-LB. CAP. MDL. H620C, 124.5" max. lift ht., 2-stage mast, approx. unit weight: 83,000-lbs., back tilt: 13 degrees; tire pressure PSI: 100, drive thread width: 116.17", 70,500-lb. max. load at 36" L.C., 61,000-lb. max. load at 48" L.C., 54,000-lb. max. at 60" L.C., S/N C008001591M.
CNC LATHES
(2) JOHNFORD MDL. HT-100E, Fanuc 18iT CNC control, SMW hydraulic steady rest, Schunk Rota TB-500 24" 4-jaw chuck w/10" bore, 60 HP gearbox spdl., 36.6" max. turning dia., 100.4" max. turning length, 9.3" max. bar capacity, 27.2" swing over bed, 23.6" swing over cross slide, 98.46" distance btwn. centers, 12-station turret capacity, S/N's N.A.



**HYSTER
70,000-LB. CAP.
FORKLIFT**



**JOHNFORD
HT-100E
CNC LATHE**

9.3" SPINDLE BORE

LARGE CAPACITY

2 AVAILABLE



**YAMA SEIKI
VMB-1020
VERTICAL
MACHINING
CENTER**



**MORI SEIKI
DURA TURN
CNC LATHE**

LOCATION 15
At the Premises of
MACHINESTATION
601 MCFARLAND STREET,
HOUSTON, TEXAS 77011



SHENYANG VTC4048II CNC VERTICAL TURNING CENTER

CNC VERTICAL MACHINING CENTERS

YAMA SEIKI MDL. VMB-1020, new 2006, Fanuc Oi-MC CNC control, 9,294 (only) cutting hours, CAT-40, 8,000 RPM, 24-station ATC, 40.2" X, 23.6" Y, 23.6" Z-axis travels, 44.1"L. x 23.6"W. tbl., 25 HP, S/N 6017.

HAAS MDL. VF-3, 40" X, 20" Y, 25" Z-axis travels, CAT-40, 10,000 RPM, 20 HP, 24+1 position tool changer, S/N 32135.

4TH AXIS ROTARY TABLE

SAMCHULLY MDL. S-650F22, Fanuc servo drive and motor, 14.64" Big Bore, function vertically or horizontally, 25.94" rotary tbl. dia., S/N 1507003.

CNC VERTICAL TURNING CENTER

SHENYANG MDL. VTC4048II, Fanuc Oi-TC CNC control, 12" 3-jaw chuck, 8-station turret, 15.75" max. turning dia., 19.67" max. swing dia., 18.9" max. turning ht., 2,200 RPM, A2-8 spd., 25 HP, 9.84" X, 19.67" Z-axis travels, S/N A10810078

HORIZONTAL MACHINING CENTERS

(2) HAAS MDL. EC-400, new as 2005, (more specs to come), S/N 51544 (2005), S/N 51419 (2004).

CNC LATHES

MORI SEIKI MDL. DURA TURN, new 2007, MSC-504 CNC control, 10" hydraulic chuck, 12-station high spd. turret, programmable tailstock, S/N DT-205GH0225.

JOHNFORD MDL. SL-500, new 2005, Fanuc Oi-TC CNC control, 10" 3-jaw hydraulic chuck, 12-station turret, 17.7" max. turning dia., 25.59" max. turning length, 3" max. bar capacity, 22.8" swing over bed, 12-station turret capacity, S/N TEN5048.

HARDINGE MDL. CONQUEST T-42L, GE Fanuc 18-T CNC control, 12-station turret, 15 HP spd., 9.5" max. turning dia., 13.9" max. turning length, 1.62" max. bar capacity, 14.47" swing over bed, 14" distance btwn. centers, S/N N.A.

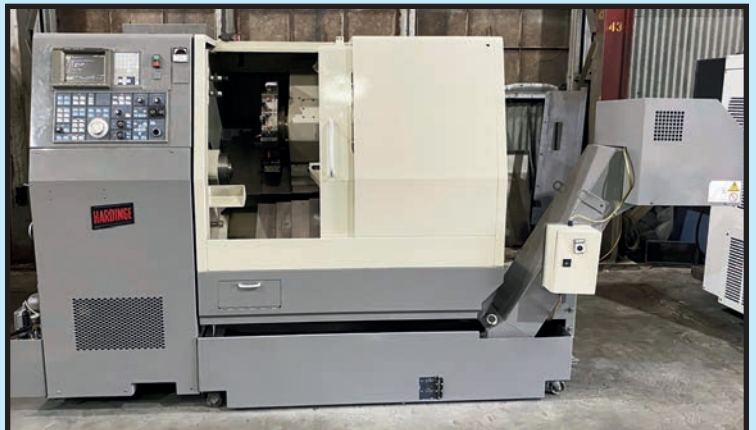


**SAMCHULLY 4TH AXIS
ROTARY TABLE**

INSPECTION: By Appt. Only. Contact Richard at (979) 534-6100 or ops-tx@machinestation.us.



JOHNFORD SL-500 CNC LATHE



HARDINGE CONQUEST T-42L CNC LATHE



14.5" SPINDLE BORE

VANGUARD S1-262A HOLLOW SPINDLE LATHE

CNC FLATBED LATHE

MAZAK MDL. M5N, Mazatrol T-Plus CNC control, 19.5" front and rear chuck, 7.1" spdl. bore, 8-station front turret, 6-station rear turret, tailstock, 22.83" max. turning dia., 81.83" max. turning length, 24" swing over bed, 80" distance btwn. centers, 2,200 RPM, 8 + 6-stations turret capacity, S/N 135773.

HOLLOW SPINDLE LATHE

VANGUARD MDL. S1-262A, 31.5" dia. 4-jaw chuck, 14.5" hollow spdl., taper attachment, 36.0" swing over bed, 118" distance btwn. centers, S/N 6PO419091R.

ENGINE LATHE

RYAZAN MDL. 55X180, 40" dia. 4-jaw chuck, 38" swing over carriage, 46" swing over bed, 200" distance btwn. centers, 5.5" spdl. bore, spdl. spd.: 5-500 RPM, 60 HP spdl. motor, S/N N.A.

TURRET LATHE

WARNER & SWASEY MDL. 4A M-3350, S/N 1546007.

2-STAGE HONING MACHINE

OHIO TOOL WORKS, 2-stage tool expansion, automatic size control options, touch screen operator controls, 0.250" ID capacity (min), 12.0" ID capacity (max.), S/N MV0501001.

HONE

SUNNEN MDL. ML-4000, dia. range: 1.5 mm to 165.1 mm (.060 in. to 6.500 in.) dia., stroke length: 6-392 mm (.24 - 15.43 in.), S/N N.A.

DUST COLLECTOR

DONALDSON TORIT MDL. DF02-4, S/N 1859383-1.



MAZAK M5N CNC FLATBED LATHE



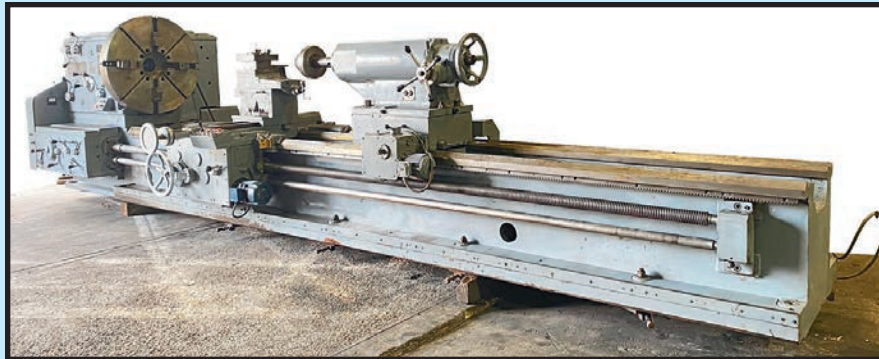
SUNNEN ML-4000 HONE



DONALDSON TORIT DUST COLLECTOR

LOCATION 15

INSPECTION: By Appointment Only. Contact Richard at (979) 534-6100 or ops-tx@machinestation.us for Appointment



RYAZAN 55X180 ENGINE LATHE



OHIO TOOL WORKS 2-STAGE HONING MACHINE

LOCATION 16

At the Premises of

ALL PRO MACHINERY MOVERS

7600 S. SANTA FE H-1., HOUSTON, TEXAS 77061

INSPECTION: By Appointment Only. Contact Richard at (979) 534-6100 or ops-tx@machinestation.us for Appointment.

CNC VERTICAL MACHINING CENTER

BRIDGEPORT HARDINGE MDL. GX1600, Fanuc Oi-MD CNC control, 3-axis, 63.9" x 27.5" tbl., 63" X, 27.5" Y, 25" Z-axis travels, CAT-50 spdl. taper, 6,000 RPM, 30 HP main motor, 32-station tool changer capacity, S/N GXEBIL0039.



BRIDGEPORT HARDINGE CNC VERTICAL MACHINING CENTER

10" SPINDLE BORE



MAZAK SLANT TURN 60 UNIVERSAL 2000 CNC LATHE

2006



TOYODA BM-1600 CNC VERTICAL MACHINING CENTER



HARDINGE CONQUEST T-42L CNC LATHE

10.2" SPINDLE BORE



MORI SEIKI SL-65C CNC LATHE

LOCATION 17
At the Premises of
MEI RIGGING & STORAGE
15900 MORALES ROAD, HOUSTON, TEXAS 77011
INSPECTION: By Appointment Only. Contact Richard at (979) 534-6100
or ops-tx@machinestation.us for Appointment

CNC LATHES

MAZAK SLANT TURN 60 UNIVERSAL 2000, Fanuc 18i-T CNC control, 10-station turret, 10" Big Bore spdl., 24" 3-jaw chuck, 28" max. turning dia., 78.74" max. turning length, 10" max. bar capacity, 36" swing over bed, spdl. spd.: 0-1,000 RPM, 60 HP spdl. motor, 10-station capacity, S/N 51009.

HARDINGE MDL. CONQUEST T-42L, GE Fanuc 18-T CNC control, 12-station turret, 15 HP spdl., 9.5" max. turning dia., 13.9" max. turning length, 1.62" max. bar capacity, 14.47" swing over bed, 14" distance btwn. centers, 12-stations turret capacity, S/N N.A.

MORI SEIKI MDL. SL-65C, MSC-516 (Fanuc 18T) CNC control, 24" main chucks and rear chuck, 10.2" Big Bore spdl., 12-station turret w/toolholders, 13.8" X-axis travels, 30.3" Z-axis travels, 26.8" max. turning dia., 24.6" max. turning length, 10.2" max. bar capacity, S/N 1467.

CNC VERTICAL MACHINING CENTERS

TOYODA MDL. BM-1600, new 2006, Fanuc 18i-MB series CNC control, 6,000 RPM high torque spdl., 63" X, 31.5" Y, 31.5" Z-axis travels, 50 taper size, 6,000 RPM spd. range, 20 HP spdl. power, 30-station ATC, S/N 6020.

KAFO MDL. VMC21100, Fanuc 18iM CNC control, thru spdl. coolant, Yuasa 16" 4th axis tbl., 84.6" X, 40.4" Y, 31.4" Z-axis travels, 50 taper size, 7,000 RPM, 30 HP, 30 capacity ATC, S/N 35297.

CNC PRESSBRAKE

AMADA MDL. HFT-220-4S, 200 T. cap., Amada CNC control, 4-axis control and back gauge, 168" press beam length, 148" distance btwn. frames, 10" length of stroke, 24.40" open ht., 10.7" closed ht., 16.5" throat clearance, S/N MVT030049.

TURRET PUNCH

AMADA MDL. PEGA 244, 20 T. cap., Amadan OPC CNC control, 1,000 mm X working area, 1,000 mm Y working area, number of stations: 24, 2 auto-index, S/N N.A.



KAFO VMC21100 CNC VERTICAL MACHINING CENTER



AMADA 200 T. X 168" BED HFT-220-4S CNC PRESS BRAKE