



PMI AUCTIONS

**2
DAYS**

WORLD-CLASS TOOL & DIE MANUFACTURING FACILITY OWNERS RETIRING - COMPLETE LIQUIDATION

FEATURING: LATE MODEL VERT., HORIZ. & BRIDGE-TYPE MACHINING CENTERS; LATE MODEL MAKINO WIRE EDM'S; HIGH QUALITY TOOLROOM MACHINERY; (2) LARGE BLANCHARD VERT. ROTARY SURFACE GRINDERS; DANLY MDL. S2-800-60-120 QDC STRAIGHT SIDE PRESS; BRIDGE CRANE SYSTEMS; FORKLIFTS; HUGE QTY. PRECISION MACHINE ACCESSORIES; MATERIAL HANDLING EQUIP.; MUCH MORE!

INSPECTION:

Monday & Tuesday,
April 10 & 11, 9:00 A.M. to
4:00 P.M. Each Day

Assets Located at

TOOL & DIE SPECIALTIES, INC.
1005 OLD PHILADELPHIA ROAD, ABERDEEN, MARYLAND 21001

18% BUYER'S
PREMIUM
WILL APPLY

**DAY 1: WEDNESDAY, APRIL 12 • 11:00 A.M. EDT
LIVE WEBCAST AUCTION (NO ONSITE BIDDING)**

**72"
CHUCK**



BLANCHARD MDL. 36HD-66
VERTICAL ROTARY SURFACE GRINDER

**48" UNDER
WHEEL**



AMERA-SEIKI MDL. VB-3 BRIDGE TYPE VERTICAL MACHINING CENTER

2011

**2,829
HOURS**



DANLY MDL. S2-800-120-60 QDC
800 T. STRAIGHT SIDE PRESS

**ROLLING
BOLSTER**

**REWIRED
2011**

**DAY 2: THURSDAY, APRIL 13 • TIMED ONLINE AUCTION • BIDS START CLOSING
AT 11:00 A.M. EDT**



ROLLER DRAWER TOOL CABINETS

**HUGE
SELECTION**



10' CONEX BOXES

**4
AVAILABLE**



ASSORTED PRECISION INSTRUMENTS

FOR BIDDING AT THIS AUCTION. Go to www.pmi-auction.com and click on BidSpotter
or proxibid on our calendar page for this auction sale.

Read Partial Terms
& Conditions on Page 11

Sale Conducted By:

PLANT & MACHINERY INC.
AUCTIONEERS • APPRAISERS • LIQUIDATORS • REAL ESTATE

AUCTIONEER: Ronald G. Moore
HOUSTON • DALLAS • ST. LOUIS

Headquarters:

1304 Langham Creek Drive, Suite 454
Houston, Texas 77084

PHONE: (713) 691-4401

FAX: (713) 672-7905

E-MAIL: pmi@pmi-auction.com
WEBSITE: www.pmi-auction.com



AUCTIONS

**DAY 1: WEDNESDAY, APRIL 12
11:00 A.M. EDT
LIVE WEBCAST AUCTION (NO ONSITE BIDDING)**

INSPECTION:
Monday & Tuesday,
April 10 & 11, 9:00 A.M. to
4:00 P.M. Each Day

FOR BIDDING AT THIS AUCTION. Go to www.pmi-auction.com and click on BidSpotter or proxibid on our calendar page for this auction sale.

DON'T MISS THIS SALE

2011



2,829
HOURS

BRIDGE TYPE MACHINING CENTER

AMERA-SEIKI MDL. VB-3, new 9/2011, Fanuc 0i-MD CNC, 65" x 126" tbl., 17,600-lb. max. weight, 126" X, 79" Y, 35" Z-axis travels, 81" btw. columns, CAT-50 spdl. taper, 6,000 RPM, 30 HP, factory built 8" riser block for additional vert. clearance, 32-tool ATC, Renishaw tool length and wireless part probing, arranged for 4th axis tbl., (4) 18"W. x 52"L. x 16"H. riser blocks for tbl., very low (2,829) in cycle hours, S/N 2011049.

2014



4-AXIS HORIZONTAL MACHINING CENTER

DOOSAN MDL. HP4000II, new 5/2014, Fanuc 31i-Mdl. B CNC, 15.75" pallets, 4th axis tbl., 23.6" X, 22" Y, 23.6" Z-axis travels, CAT-40, 14,000 RPM, 30 HP, ChipBlaster high pressure thru spdl. coolant, MistBlaster, Renishaw wireless part probing, 80-ATC, S/N MH0004-000488.

2012



DOOSAN MDL. MYNX 7500/50 4-AXIS VERTICAL MACHINING CENTER

4-AXIS VERTICAL MACHINING CENTERS

DOOSAN MDL. MYNX 7500/50, new 4/2012, Fanuc 31i CNC, 29.5" x 63" tbl. size, 3,306-lb. max. weight, 63" X, 29.5" Y, 24.6" Z-axis travels, CAT-50, 6,000 RPM, 30 ATC, Kitagawa rotary tbl. w/15-1/2" 6-jaw chuck, tail stock, Renishaw tool touch probe, Renishaw wireless part probing, S/N MV0051-000525.

DOOSAN MDL. MV5025/50, new 7/2007, Fanuc series 21i-MB CNC, 25.6" x 55.1" tbl. size, 2,200-lb. max. weight, 51" X, 24.6" Y, 25.5" Z-axis travels, CAT-50, 12,000 RPM, 20 HP, 30 ATC, Tsudakoma 4th axis rotary tbl., w/12-1/2" 6-jaw chuck and tail stock, Renishaw tool length and wireless part measuring probes, S/N AV631143.

2007



DOOSAN MDL. MV5025/50 4-AXIS VERTICAL MACHINING CENTER

ROLLING BOLSTER

REWIRED 2011



2016

MAKINO MDL. U6 H.E.A.T. 5-AXIS CNC WIRE EDM

CNC WIRE EDMS

MAKINO MDL. U6 H.E.A.T., new 8/2016, Hyper I CNC, 35.8" x 27.9" tbl., 25.61" X, 17.7" Y, 16.5" Z-axis travels, 39.4" x 31.5" x 15.8" max. workpiece, 3,300-lb. max. weight, auto. threading, Orion chiller unit, S/N M150468.

MAKINO MDL. U3 H.E.A.T., new 5/2016, Hyper I CNC, 24.8" x 17.7" tbl., 14.6" X, 10.6" Y, 8.7" Z-axis travels, 30.3" x 23.2" x 8.7" max. workpiece, 1,323-lb. max. weight, auto. threading, Orion chiller unit, S/N W140323.



2016

MAKINO MDL. U3 H.E.A.T. 5-AXIS CNC WIRE EDM



DANLY MDL. S2-800-120-60 QDC STRAIGHT SIDE PRESS

STRAIGHT SIDE DOUBLE CRANK PRESSES

DANLY 800 T. CAP. MDL. S2-800-120-60 Q.D.C., 16" stroke, 48" shut ht. of slide to carrier, 12" adj., 16-24 SPM variable, Danly Mdl. 2BP-42-7 air cushion, 138 T. 7" stroke, 42" dia., 60" x 120" rolling bolster, 9" thick, T-slotted bolster and ram, 37" windows, air clutch brake and counter balance, Link OmniLink II LCD operator panel, machine completely rewired 2011 incl. new control cabinets, OmniLink panel, and Link Lite Black Max safety light curtains for all openings, S/N 71300401.

WARCO 300 T. CAP. MDL. 300-2-84, 60" front to back x 84" right to left bed size, 5-1/4" bolster thickness, 50" x 84" long drilled and tapped ram, 20" stroke, 10" slide adj., 32" shut ht. (SDAU), 300 T. cap., 14 SPM, 25"W. windows, air clutch, brake and counter balance, Trabon Modu-Flo lube pump system, S/N 46831.

(2) 53-1/2" x 54" FABRICATED RAM SPACERS, drilled and tapped on 3-1/2" centers, 15-5/16" thick.

WARCO 300 T. CAP. STRAIGHT SIDE PRESS



2 DAYS



FABRICATED RAM SPACERS

Assets Located at
TOOL & DIE SPECIALTIES, INC.
1005 OLD PHILADELPHIA ROAD
ABERDEEN, MARYLAND 21001



72" CHUCK

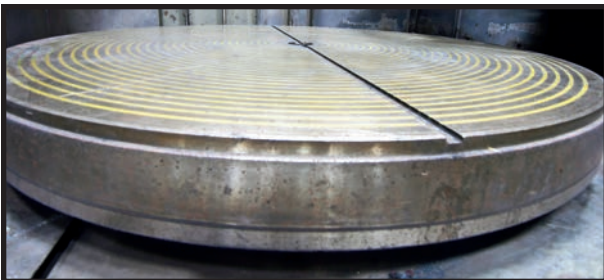
48" UNDER WHEEL

BLANCHARD MDL. 36HD-66 VERTICAL ROTARY SURFACE GRINDER

VERTICAL ROTARY SURFACE GRINDERS

BLANCHARD MDL. 36HD-66, w/72" electromagnetic chuck, 7/8" remaining chuck life, 32" segmented wheel, 150 HP wheel drive motor, 48" max. ht. under wheel, soft start system, external coolant systems w/Barnes magnetic separator, S/N 15106.

BLANCHARD MDL. 22HD-42, w/42" electromagnetic chuck, approx. 1/2" remaining chuck life, 22" dia. segmented wheel, 100 HP wheel drive motor, variable spds., neutrofier, soft start system, external coolant system w/Barnes magnetic separator, S/N 15166.



72" BLANCHARD CHUCK W/7/8" REMAINING CHUCK LIFE



MATTISON 20" X 48" "DIE BLOCK" SURFACE GRINDER

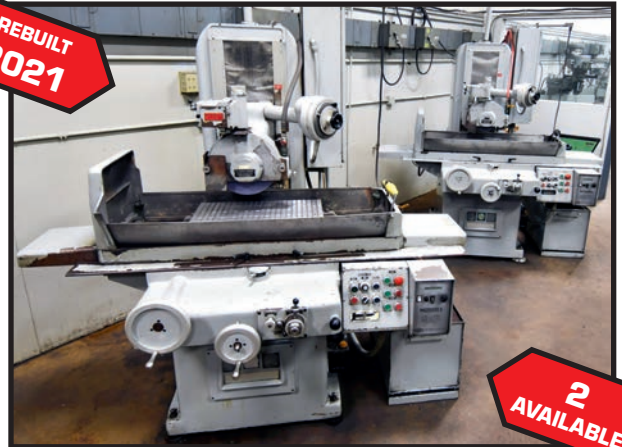
SURFACE GRINDERS

MATTISON 20" X 48" DIE BLOCK, 20" under new wheel, incremental down feed, "travatrol" cross feed control, 20" x 3" wheel size, 15 HP direct drive spdl. motor, external unitized hyd. system, electromagnetic chuck and variable control, S/N 24468.

(2) GALLMEYER & LIVINGSTON MDL. 373, 12" x 24" automatic hyd. surface grinders, (both rebuilt in 2021 by American Machine Tool) 12" x 24" electro-magnetic chuck, 12" x 1" wheel size, "incrementatic" down feed control, variable chuck controls, precision over-wheel dresser, S/N 373408, S/N 373401.

(2) PARKER MAJESTIC 6" X 18" HAND FEED, 1-1/2 HP direct drive spdl., 7" max. wheel dia., pwr. elevation, walker fine line magnetic chucks, S/N 5122ZV84, S/N 5227-ZM-85.

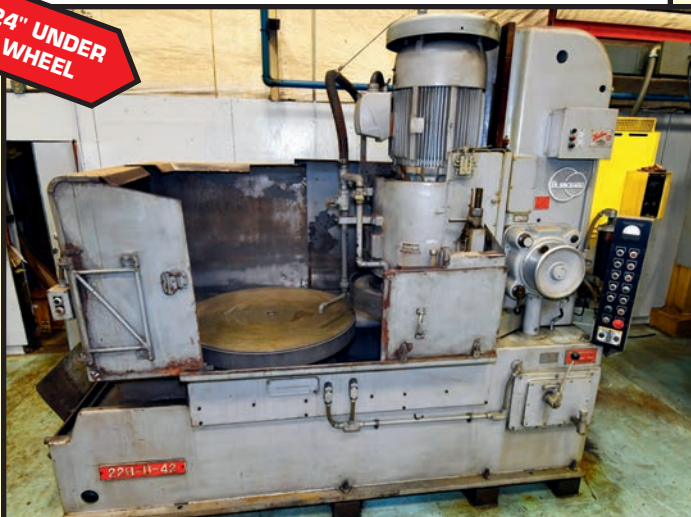
REBUILT 2021



2 AVAILABLE

GALLMEYER & LIVINGSTON 12" X 24" AUTOMATIC SURFACE GRINDERS

24" UNDER WHEEL



BLANCHARD MDL. 22HD-42 VERTICAL ROTARY SURFACE GRINDER



2 AVAILABLE

PARKER MAJESTIC 6" X 18" HAND FEED SURFACE GRINDERS



VIEW OF MOORE
JIG GRINDER AND BORER

MISCELLANEOUS GRINDERS

MOORE MDL. 3 JIG GRINDER, (4) turbine grinding heads, range of accessories, S/N G806.

MEDINA MDL. B END GRINDER, 8-1/2" x 15" magnetic chuck, 1.1 kW wheel drive motor, 7" cup style wheel, heavy cast iron construction, S/N 103.

PLUS: HELD TYPE E-90 CHAMFER GRINDER, new 1984, 20" long checkered 90 deg. fixture, fine ht. adj., S/N 3021; **PROSSER CARBIDE TOOL GRINDER MDL. AA**, w/cast iron stand, S/N 250; **BALDOR 1.5 HP PEDESTAL GRINDER**, w/cast iron pedestal; **WALKER TURNER 1 HP PEDESTAL GRINDER**, w/cast iron base; **DELTA COMBINATION BELT DISC SANDER**, 6" belt, 12" disc, w/fabricated stand and tilt tbls.

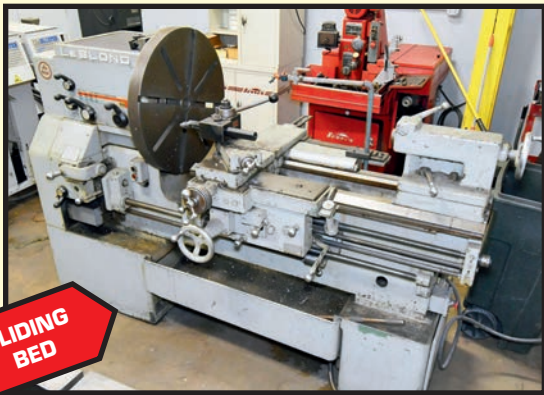


MEDINA MDL. B
END GRINDER

ENGINE LATHES

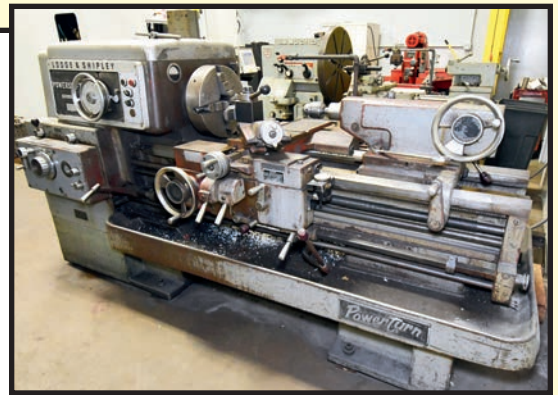
LEBLOND SLIDING BED GAP, 19" sw. over bed, 8" sw. over cross slide, 37" sw. in gap, approx. 28" length of gap, 36" center distance closed, 72" center distance open, spds.: 68–1,000 RPM, quick change tool post taper attachment, 26-1/2" face plate, 14" 4-jaw chuck, S/N 6E798.

LODGE & SHIPLEY POWERTURN MDL. 1610, 18" x 30", 10" sw. over cross slide, pwr. to preselector head stock, spds.: 50–2,000 RPM, taper attachment, 14" 4-jaw chuck, quick change tool post, S/N 44901.



SLIDING
BED

LEBLOND SLIDING BED GAP ENGINE LATHE



LODGE & SHIPLEY POWERTURN ENGINE LATHE

**DAY 1: WEDNESDAY
APRIL 12
11:00 A.M. EDT
LIVE WEBCAST AUCTION
(NO ONSITE BIDDING)**

VERTICAL TURRET MILLING MACHINES

(6) BRIDGEPORT MDL. SERIES 1, (most were rebuilt in 2017 by American Machine Tool), 9" x 48" tbl., variable spd.: 60–4,200 RPM, Bridgeport pwr. feed, Acu-Rite 2-axis digital read-out. (Rebuilt: S/N 110243, S/N 271838, S/N 271839, S/N 277003, S/N 271852.) (Not Rebuilt: S/N 284272).

VIEW OF BRIDGEPORT
MILLING MACHINES



REBUILT
2017
6
AVAILABLE

DON'T MISS THIS SALE

RADIAL ARM DRILL

CARLTON 5' ARM, 13' COLUMN, spds.: 15–1,500, pwr. elevation, pwr. head travel, 62-1/2" x 36" x 20" T-slotted box tbl., S/N 3A3878.

PRECISION TOOLROOM LATHE

HARDINGE MDL. HLV-H, variable speed 125–3,000 RPM, inch/metric threading, 2-axis Acu-Rite digital read-out, quick change tool post w/holders, large selection of collets, 6" 3-jaw chuck, S/N HLV-H-15313-T.



CARLTON 5' X 13' RADIAL ARM DRILL



HARDINGE MDL. HLV-H PRECISION TOOLROOM LATHE



AMADA QUATRO CNC 4' X 4' SHEET CAP. LASER

Assets Located at
**TOOL & DIE
 SPECIALTIES, INC.**
 1005 OLD PHILADELPHIA ROAD,
 ABERDEEN, MARYLAND 21001

**DAY 1: WEDNESDAY
 APRIL 12
 11:00 A.M. EDT
 LIVE WEBCAST AUCTION
 (NO ONSITE BIDDING)**

INSPECTION: Monday & Tuesday, April 10
 & 11, 9:00 A.M. to 4:00 P.M. Each Day

CNC LASER

AMADA QUATRO CNC, new 7/2008, 4' x 4' sheet size, 2,000 watt Fanuc Mdl. AF2000E laser, 21,435 total resonator hours, Fanuc 16i-L CNC control, S/N 00440603.

FABRICATING MACHINES

WYSONG MECHANICAL SHEAR MDL. 1252, 12-ga. x 52" cap., rear operated back gauge, 2-front support arms, left-hand squaring arm, S/N P13-1149.

WYSONG HYDRO-MECHANICAL PRESSBRAKE MDL. H-2052, 20 T. x 52" cap., 2-1/2" stroke, 3" adj., 9" diespace, front operated 2-axis backgauge, foot pedal and dual palm button controls, S/N HPB12-188.

ALFA MDL. 100-D DIE TRYOUT PRESS, 100 T., dual palm button controls, 32-1/2" x 44" bed size, 24" x 44" ram size, drilled tapped bed and ram, S/N 111.

COE MDL. HS5-30 PULL THROUGH STRAIGHTENER, 30"W., 5-roll pull through straightener, on fabricated stand, S/N 4937-3.

KYSOR JOHNSON MDL. J HORIZONTAL BANDSAW, 10" cap., 3/4" blade size, 18" rectangular cap., S/N 22043.

DOALL MDL. 2013-10 VERTICAL BANDSAW, w/blade welder and grinder, S/N 339-78923.



DOALL VERTICAL BANDSAW



WYSONG 20 T. X 52" CAP. PRESSBRAKE



LUCIFER MDL. HS8-K24



LUCIFER MDL. 8912-AM-C

HEAT TREAT FURNACES

LUCIFER MDL. HS8-K24, 24 kW, 2,450 deg. furnace, 1,200 deg. draw furnace, 233/60 230 v., digital temp. controllers, S/N 6784.

LUCIFER MDL. 8912-AM-C, 31 kW, 3/60/230 v., 2,100 deg. furnace temp., Honeywell temp. controls.



WYSONG 12 GA. X 52" CAP. MECHANICAL SHEAR



KURT 8" MILLING VISES



PARTIAL VIEW OF CAT-40 AND CAT-50 TOOL HOLDERS

PRECISION MACHINE ACCESSORIES

(7) KURT ANGLE-LOCK 6" HD MILLING VISES; R-8 COLLET SETS; R-8 TOOL HOLDERS; BRIDGEPORT RIGHT ANGLE ATTACHMENT; (3) BRIDGEPORT BORING HEADS; (1) 10" KURT HD MILLING VISE; (4) KURT 6" HD MILLING VISES.

MACHINING CENTER TOOLING

(140) CAT-50 TOOL HOLDERS INCL. EXTENDED LENGTH END MILL HOLDERS AND SHELL MILL HOLDERS; COLLET STYLE HOLDERS; KEYLESS DRILL CHUCKS; TAPPING HOLDERS BY LYNDEX AND PIONEER; (55) CAT-40 MACHINING CENTER TOOL HOLDERS; END MILL HOLDERS; COLLET STYLE HOLDERS; SHELL MILL HOLDERS; EXTENDED LENGTH COLLET HOLDERS; EXTENDED LENGTH END MILL HOLDERS; (6) 8" KURT HD MILLING VISES; (2) TOMBSTONES, 15.7" x 15.7" x 3" thk., 2-sided, drilled on 2" centers; (2) TOMBSTONES, 15.7" x 21.25" x 4"W., picture frame style, mfg. Suburban Tool.

MISCELLANEOUS MACHINERY

SUNNEN MDL. LBB-1810 HORIZONTAL HONING MACHINE, pwr. stroking device, oil coolant system, Sunnen Mdl. LN650 hone tooling cabinet, wide selection hones and stones, S/N 15055.

MOORE MDL. 3 JIG BORING MACHINE, Sony 2-axis digital read-out, wide selection of boring accessories, S/N B1079.

TRINCO DRYBLAST GLOVE BOX STYLE BLAST, 36" x 36" w/recirculating abrasive system.

CUSTOM HYDRAULIC SHOP PRESS, approx. 25 T., 48" x 24" bed size w/T-slot, 2-1/4" dia. ram, hand operated hyd. system, rapid ram advance.

WELDING POWER SOURCES & ACCESSORIES

MILLER SPECTRUM 1000 PLASMA CUTTER, on roller cart, S/N LJ290181P; AIRCO PULSE ARC II 400 MIG WELDER, 400 amp., w/Med40 wire feeder; DC ARC WELDER, LINDE UCC-305, 300 amp., w/stick leads; WELDING BENCH, ASSORTED WELDING ACCESSORIES.

TOOLS

MILWAUKEE FUEL BATTERY PWRD. DRILL AND FLASHLIGHT KIT; MILWAUKEE FUEL BATTERY PWRD. PORT-A-BAND SAW; SAWZALL; CIRCULAR SAW; 6" AND 4" ANGLE GRINDERS; PAD SANDERS; DYNABRADE PNEUMATIC GRINDERS; MILWAUKEE MAGNETIC BASE DRILL; BUX MAGNETIC BASE DRILL; HAND STAMPS; WIDE ARRAY OF FORGED C-CLAMPS; IMPACT WRENCHES; HYDRAULIC BOTTLE JACKS; TRANSFER PUNCHES; WIDE ARRAY OF HAND TOOLS; MORE.

AIR COMPRESSOR SYSTEM

ATLAS COPCO MDL. GA26P ROTARY SCREW AIR COMPRESSOR, new 2014, 34.9 HP, S/N CA18110680.

BEKO DRYPOINT RA MDL. RACT200-R/XB REFRIGERATED AIR DRYER, new 2021, w/cycling technology, S/N 210005863/21.

SYLVIAN INDUSTRIES AIR RECEIVER, new 1998, approx. 36" dia. x 8' tall.

DON'T MISS THIS SALE



TOMBSTONES AND VISES



MILLER SPECTRUM 1000 PLASMA CUTTER



SUNNEN HONE AND TOOL CABINET



ATLAS COPCO 35 HP ROTARY SCREW AIR COMPRESSOR

2014



BEKO DRYPOINT RA AIR DRYER

2021



OVERHEAD CRANE SERVICE 15 T. CAP. X APPROX. 54' SPAN OVERHEAD BRIDGE CRANE

BRIDGE CRANES

15 T. CAP. OVERHEAD CRANE SERVICE CO. W/RUNWAY, approx. 54' span, top running, single girder, under-hung, Yale 15 T. unitized wire rope hoist and trolley, 23'9" ht. under crane rail, double end drive, pendant control, 97' of linear runway (no uprights included), pwr. festoon, rail, S/N 8042-11.

5 T. CAP. X 23'10" SPAN X APPROX. 85' FREE STANDING SYSTEM, 19'10" distance btwn. upper columns, 13'5" ht. to crane rail, approx. 10'H. under hook; **PHILADELPHIA TRAMRAIL 5 T. CAP. SINGLE GIRDER TOP RUNNING UNDER-HUNG BRIDGE W/P&H 5 T. WIRE ROPE HOIST**, 6-way power motion double end bridge drive system incl. all electrification, festoon, rail supports.



PHILADELPHIA TRAMRAIL 5 T. CAP. OVERHEAD BRIDGE CRANE SYSTEM

DAY 1

LPG FORKLIFTS

HYSTER 15,000-LB. BASE CAP. MDL. S150A, 14,900-lb. max. cap @ 24" load center, LPG, 99.5" max. lift, large dia. cushion tires, addl. counter weighting, 72" forks..

HYSTER 6,000-LB. BASE CAP. MDL. S60FT, 5,650-lb. max. cap. at 24" load center, LPG, 176" max. lift, 21" x 8" x 15" cushion non-marking front tires, 16 x 6 x 10.5 cushion non-marking rear tires, side shift, load grate, triple stage mast, dock lights, S/N F187V20376K.



HYSTER 6,000-LB. BASE CAP. FORKLIFT



HYSTER 15,000-LB. BASE CAP. FORKLIFT



FORD F-150 LARIAT 4X4 CREW CAB PICKUP TRUCK



FORD F-250 4X4 CREW CAB DIESEL PICKUP TRUCK

PICKUP TRUCKS

2016 FORD F-150 LARIAT 4X4 CREW CAB, 105,000 miles, gasoline, Rocky Ridge Altitude edition lift kit, auto. running boards, full leather, short bed, VIN 1FTEW1EG-3GFD35762.

2012 FORD F-250 SUPER DUTY XLT 4X4 CREW CAB, B20 diesel, running boards, 175,000 miles, short bed, pwr. stroke, VIN 1FT7W2BT8CEA95852.



AUCTIONS

Assets Located at

TOOL & DIE SPECIALTIES, INC.

1005 OLD PHILADELPHIA ROAD, ABERDEEN, MARYLAND 21001

FOR BIDDING AT THIS AUCTION.
Go to www.pmi-auction.com and click on BidSpotter on our calendar page for this auction sale.

DAY 2 • TIMED ONLINE AUCTION

THURSDAY, APRIL 13 • BIDS START CLOSING AT 11:00 A.M. EDT



DEVLIEG 24-1/2"W. X 57"H. X 30"D. ANGLE PLATES



PRECISION MACHINE ACCESSORIES



DEVLIEG 20-1/2"W. X 40-1/2"H. X 22"D. ANGLE PLATES

PRECISION MACHINE ACCESSORIES

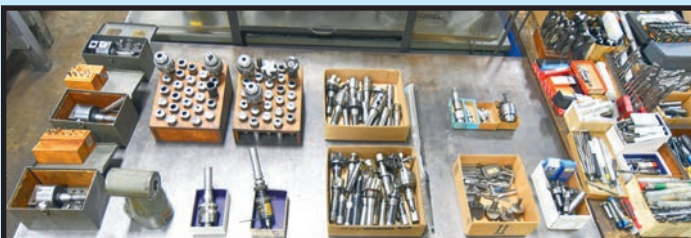
(2) DEVLIEG ANGLE PLATES, 24-1/2"W. x 57"H. x 30"D., cast iron construction, scrapped face, single piece; (2) DEVLIEG ANGLE PLATES, 20-1/2"W. x 40-1/2"H. x 22"D., cast iron construction, plate face, 2-piece construction; 3" SWIVEL VISES; UNIVERSAL FIXTURE TBL.; SPIN INDEX FIXTURE; PRECISION GRINDING VISE; WIDE SELECTION OF PRECISION GROUND ANGLE PLATES; SINE BARS; PRECISION GROUND V-BLOCKS; MAGNETIC PARALLELS AND MAGNETIC V-BLOCKS; 123 FIXTURE BLOCKS; FLY CUTTERS.

HEAVY DUTY FABRICATED DIE STANDS

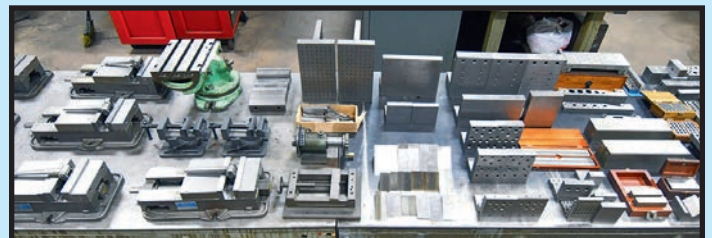
(40) 36" W. X 32"H. WHITE OAK TOP PAD IN FABRICATED TRAY, HD construction from 3" heavy wall tubing.



HEAVY DUTY FABRICATED DIE STANDS



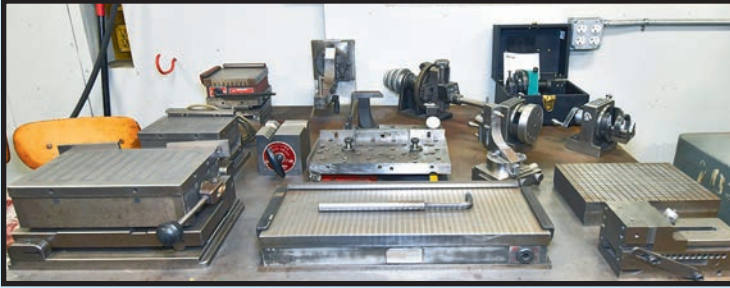
MACHINE TOOLING ACCESSORIES TO BE SOLD BOTH DAYS - SEE CATALOG



PRECISION MACHINE ACCESSORIES

WORLD-CLASS TOOL & DIE MANUFACTURING FACILITY – OWNERS RETIRING – COMPLETE LIQUIDATION

DAY 2 • TIMED ONLINE AUCTION



GRINDER ACCESSORIES

PRECISION GRINDER ACCESSORIES

123 PERMANENT MAGNETIC SINE CHUCKS UP TO 6" X 12"; J&S RADIUS TANGENT DRESSER; ATCO PUNCHMATE PUNCH GRINDERS; PRECISION GRINDING VISE; LAPPING PLATE; MAGNETIC V-BLOCK; (3) 7" X 6" X 5" MAGNETIC PARALLELS; 48" X 96" X 12" STARRETT GRANITE SURFACE PLATE W/HD FABRICATED ROLLER BASE, S/N 724199; MORE.

VIDMAR & LISTA STORAGE CABINETS

(10) LISTA ROLLER DRAWER PORTABLE TOOL BENCHES, w/2" maple top, 5-roller drawers, HD casters; (2) LISTA MAPLE TOP WORK BENCHES, w/5-drawer roller tool cabinets, 2" maple top; KENNEDY ROLLER DRAWER TOOL BOXES, w/small, med. and large tool boxes; (2) SECURALL 56"W. X 65"H. X 30"D. FLAMMABLE MATERIAL STORAGE CABINETS; (3) 90"L. X 30"W. WORK BENCH, w/3-drawer roller drawer cabinet w/maple top; (3) 90" LONG WORK BENCH, w/4-drawer roller drawer cabinets and 2" maple top; (4) LISTA CABINETS, 57" x 28" 6-drawer; (4) LISTA WORK BENCH 4-DRAWER ROLLER TOOL CABINET, w/60"L. x 2" oak top; LISTA 7-DRAWER ROLLER CABINET, 28"W. x 57"H.; VIDMAR 60"W. X 59"H. 6-DRAWER HD ROLLER DRAWER CABINET; (11) VIDMAR 59-1/2" TALL, 6-DRAWER; (6) VIDMAR 59-1/2" TALL, 7-DRAWER; VIDMAR 59-1/2" TALL 9-DRAWER CABINET; (2) VIDMAR 59-1/2" TALL 13-DRAWER CABINET; (4) VIDMAR 59-1/2" TALL 14-DRAWER CABINET; MORE.

PRECISION MEASURING INSTRUMENTS

GRANITE SURFACE PLATE, 18" x 24" x 4", 2-ledge; STARRETT 12"-18" MICROMETER SET; STARRETT 18"-24" MICROMETER SET; STARRETT 24"-30" SET, w/standards and anvils; MITUTOYO 40" AND 24" VERNIER CALIPER; MITUTOYO 6"-12" MICROMETER SET; SUNNEN GAGE SETTING FIXTURE; (3) SUNNEN BORE GAGES; MITUTOYO 12" HEIGHT MASTER; MITUTOYO 24" DIGITAL HEIGHT GAGE; KURT 12" DIGITAL HEIGHT GAGE; FOWLER 12" DIGITAL HEIGHT GAGE; (2) FOWLER 24" DIGITAL CALIPERS; MITUTOYO 12" DIGITAL CALIPER; MITUTOYO 8" DIGITAL CALIPER; (2) MITUTOYO 6" DIGITAL CALIPERS; LARGE SELECTION OF VERNIER AND DIAL TYPE CALIPERS OF VARIOUS MANUFACTURES; WIDE RANGE OF VARIOUS MICROMETERS FROM 1" TO 12" CAP.; MITUTOYO 0-1" DIGITAL THREAD MICROMETER; WIDE ARRAY OF TEST INDICATORS AND PLUNGER INDICATORS; DEPTH MICROMETERS W/INTERCHANGEABLE RODS; MAGNETIC AND CAST IRON INDICATOR STANDS; (3) SETS OF DUAL GAGE BLOCKS; DUAL HOKE GAGE BLOCK SET; MULTIPLE PIN GAGE SETS, up to 1/2"; PRECISION GROUND PARALLELS; SEVERAL PRECISION GROUND 234 BLOCKS AND 246 BLOCKS; SERVICE DIAMOND TOOL CO. HARDNESS TESTER MDL. 8A, w/granite surface plate and steel stand, S/N 5201; MORE.

HIGH QUALITY TOOL STEEL

LARGE SELECTION OF TOOL STEEL, incl. 4140, HRS., F7, D2, M2, M4, A2, VAN; LARGE ASSORTMENT IN SORTED RACK, most are coded w/grade markings.



ASSORTED PRECISION INSTRUMENTS

10



10 AVAILABLE

LISTA ROLLER TOOL CABINETS



HUGE SELECTION

VIDMAR ROLLER DRAWER TOOL CABINETS



FLAMMABLE MATERIAL STORAGE CABINETS



HUGE ASSORTMENT OF TOOL STEEL

THURSDAY
APRIL 13
BIDS START
CLOSING AT
11 A.M. EDT

INSPECTION:
Mon. & Tues.
April 10 & 11,
9:00 A.M. to
4:00 P.M. Each Day

DAY 2 • TIMED ONLINE AUCTION

THURSDAY, APRIL 13 • BIDS START CLOSING AT 11:00 A.M. EDT



ASSORTED PRECISION INSTRUMENTS



STARRETT MICROMETER SETS

Assets Located at
TOOL & DIE SPECIALTIES, INC.
 1005 OLD PHILADELPHIA RD., ABERDEEN, MD 21001

INSPECTION: Monday & Tuesday, April 10 & 11, 9:00 A.M. to 4:00 P.M. Each Day



PARTIAL VIEW OF QC EQUIPMENT AND COMPUTERS

BUSS DUCT
BUSS DUCT, MFG. BY FEDERAL PACIFIC AND WESTINGHOUSE, 600 v., w/multiple plug in boxes, 40' section, 48' section, (2) 10' sections, (2) 93' sections, (2) 23' sections, (2) 75' sections, (2) 24' sections.

MATERIAL HANDLING EQUIPMENT
HUGE ASSORTMENT INCL.: TECHNOMAGNETE MAX. 1500 AND TECHNOMAGNETE MAX. 1000 PERMANENT MAGNETIC LIFTING DEVICES; WIDE ASSORT. OF 2- AND 4-LEG CHAINS W/HOOKS; HUGE ASSORT. OF SWIVEL EYEBOLTS; STRAPS; LIFTING CHAINS up to 5/8" dia.; **CLAMPS; T-NUT CLAMPING KITS; STRAPS; SCREW JACKS; BIG JOE MDL. 75110 ELECTRIC DIE LIFT**, 1500-lb. cap., currently arranged as a furnace handler, S/N 120.



CLAMPS, LIFTING EYES AND MORE

CONEX CONTAINER BOXES
40' HIGH CUBE, w/contents of structural steel, assort. plate clips and drops, single side cantilever steel rack, assort. pallet racking w/contents; **(2) 40'**, w/assort. material handling items, crane scale, 25,000-lb. Martin Decker w/fabricated steel stand, die plates; **(4) 10'**, 8'W. x 10'D., stackable, built by CIMC, in excellent condition.



10' CONEX BOXES

4 AVAILABLE

PARTIAL TERMS & CONDITIONS:
 An 18% Buyer's Premium Will Apply.
 Everything will be sold to the highest bidder or bidders for cash in accordance with the auctioneer's Customary Terms of Sale, copies of which will be posted on our website.
ALL PAYMENTS MUST BE MADE BY CASHIER'S CHECK, WIRE TRANSFER OR COMPANY CHECK WITH BANK LETTER GUARANTEEING PAYMENT TO PLANT & MACHINERY INC.
 Here is an example of what your letter should be: Mr. "Customer Name" is a customer of this bank. This bank will guarantee unqualified payment to PMI on the account listed herein up to the amount of \$ _____. This letter is good until May 12, 2023.
 In default of payment of bills in full within the time therein specified, the Auctioneer in addition to all other remedies allowed by law, may retain all monies received as deposit or otherwise, as liquidated damages. All items must be removed by the time announced at the start of the sale.
 Lots not paid for and/or removed within the time allowed may be resold at public or private sale without further notice, and any deficiency, together with all expenses and charge of resale, will be charged to the defaulting purchaser.
 The buyer acknowledges that he or an agent has inspected all of the assets upon which he will be bidding and/or does purchase.
 Buyer agrees to accept assets purchased "AS IS," WITH "ALL FAULTS"
AND "WITH REMOVAL AT BUYER'S RISK AND EXPENSE." THE AUCTIONEER EXPRESSLY DISCLAIMS ON THE PART OF THE AUCTIONEER AS AGENT AND THE SELLER, ANY WARRANTY AS TO FITNESS OR USABILITY OF ALL THE ASSETS, AND THE BUYER EXPRESSLY WAIVES ANY CLAIM IN RESPECT TO ANY POSSIBLE FUTURE USE OF ANY ASSET PURCHASED FOR ANY PURPOSE WHATSOEVER.
 The buyer does hereby assume and does agree to indemnify and hold the auctioneer harmless from any future claim which shall pertain to the fitness or use of that asset as being purchased. Riggers, movers, electricians and buyers performing work at the Auction Site must provide PMI with evidence of insurance. The insurance coverage must be at a level acceptable to PMI and to the seller. PMI reserves the right to withdraw items, alter the order of the sale, accept bids from the seller, and group lots as it may deem appropriate. This auction may include consignment items.
 Although all information has been obtained from sources deemed reliable, the auctioneer and seller make no warranty or guarantee, expressed or implied, as to the accuracy of the information herein contained, or contained in our catalog. It is for this reason that buyers should avail themselves of the opportunity to make inspection prior to the auction. Although it is not likely, auction sales are subject to cancellation or postponement. Kindly contact auctioneer prior to attendance.
 These terms and conditions may be modified or supplemented by language in the catalog available online or by announcement at the start of the sale. Bidders should be attentive to those announcements and to the catalog language.

ONLINE REGISTRATION AT BidSpotter DAY 1 & 2
proxibid DAY 1 ONLY

1. Use the [link](#) on PMI's website calendar. www.pmi-auction.com for your chosen bidding platform. **DO IT NOW!**
2. This auction will require a Cash, or credit card, or debit card, 100% refundable deposit. If by credit or debit card, it can be added through the (Bidspotter.com or Proxibid.com for DAY 1 ONLY) fully secure and PCI compliant registration process and will be assessed a 100% refundable \$3,000 (US Bidder) or a \$10,000 (Foreign Bidder) deposit in order to be approved to bid online with this auction. Cash deposits can be made by wire transfer. **DON'T WAIT.** If you are unsuccessful in the auction, the refund of your credit/debit card deposit will occur within 24 hours. Cash deposits will be expedited as well.

If you need assistance, don't hesitate to call (713) 691-4401.
ALL BIDS ARE SUBJECT TO AN 18% BUYER'S PREMIUM.

PLANT & MACHINERY INC.
AUCTIONEERS • APPRAISERS • LIQUIDATORS • REAL ESTATE

P.O. Box 218568
Houston, TX 77218-8568

DATED MATERIAL - PLEASE DELIVER

DAY 1: WED. APRIL 12 • 11:00 A.M. EDT • LIVE WEBCAST ONLY

**DAY 2: THURSDAY, APRIL 13
11:00 A.M. EDT – TIMED ONLINE ONLY**

**PUBLIC
AUCTION**



Presorted
First Class Mail
U.S. Postage
PAID
Eugene, Oregon
Permit No. 17

**WORLD-CLASS TOOL & DIE
MANUFACTURING FACILITY
OWNERS RETIRING –
COMPLETE LIQUIDATION**

FEATURING: LATE MODEL VERT.,
HORIZ. & BRIDGE-TYPE MACHINING CENTERS;
LATE MODEL MAKINO WIRE EDM'S;
HIGH QUALITY TOOLROOM MACHINERY;
(2) LARGE BLANCHARD VERT. ROTARY SURFACE
GRINDERS; DANLY MDL. S2-800-60-120 QDC
STRAIGHT SIDE PRESS; BRIDGE CRANE
SYSTEMS; FORKLIFTS; HUGE QTY. PRECISION
MACHINE ACCESSORIES; MATERIAL HANDLING
EQUIP.; MUCH MORE!

**ATTENTION: PLANT MANAGER
OR EQUIPMENT BUYER**

2-DAY AUCTION
ABERDEEN, MARYLAND



2014

DOOSAN MDL. HP4000 II 4-AXIS
HORIZONTAL MACHINING CENTER



2 EDMs
AVAILABLE

2016

MAKINO MDL. U6 H.E.A.T.
5-AXIS CNC WIRE EDM



2008

AMADA QUATRO CNC 4' X 4' SHEET CAP. LASER



2016

FORD F-150 LARIAT 4X4 CREW CAB PICKUP TRUCK



REBUILT
2017

6
AVAILABLE

VIEW OF BRIDGEPORT
MILLING MACHINES



2014

ATLAS COPCO 35 HP ROTARY SCREW
AIR COMPRESSOR

**2
DAYS**

DAY 1: WED. APRIL 12 • 11:00 A.M. EDT • LIVE WEBCAST ONLY

DAY 2: THURS., APRIL 13 • 11:00 A.M. EDT – TIMED ONLINE ONLY