

CELEBRATING 50 YEARS



SALES MANAGERS & AUCTIONEERS

**BIG ENOUGH FOR
THE INDUSTRY LEADERS,
YET PERSONAL ENOUGH
FOR AMERICA'S FARMER.**

**AMERICA'S
AUCTION COMPANY**

HOUSTON, TEXAS

**OPENS: SATURDAY, SEPTEMBER 2ND AT 10:00 AM
CLOSES: TUESDAY, SEPTEMBER 12TH AT 1:00 PM**

****TIMED AUCTION****

BANKRUPTCY AUCTION

BRH-GARVER CONSTRUCTION, LLC

CONSTRUCTION EQUIPMENT OF ALL KINDS,
CAT, KOMATSU AND MORE



ASHTABULA, OHIO

****ONSITE-LIVE & TIMED AUCTION****

LIVE: WEDNESDAY, SEPTEMBER 13TH AT 9:30 AM

LIVE: THURSDAY, SEPTEMBER 14TH AT 9:30 AM

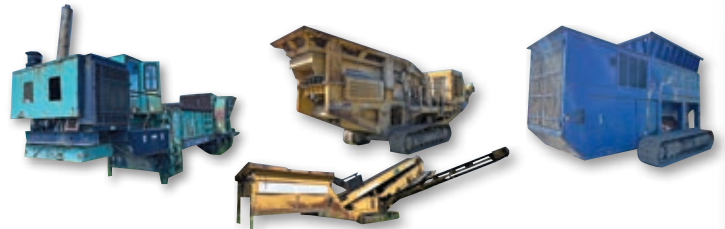
OPENS: FRIDAY, SEPTEMBER 1ST AT 12:00 PM

CLOSES: FRIDAY, SEPTEMBER 15TH AT 12:00 AM

**LATE MODEL AGGREGATE, CONSTRUCTION
& RECYCLING EQUIPMENT AUCTION**

KANECT RECYCLING

AGGREGATE, CONSTRUCTION & RECYCLING EQUIPMENT, ALL
TYPES OF TRUCKS: ROLLOFF, DUMP, SERVICE & PICKUP,
VARIOUS TRAILERS, VERY LARGE AMOUNT OF STEEL PLATES,
SUPPORT AND ACCESSORIES



AUSTIN, TEXAS

WEDNESDAY, SEPTEMBER 20TH AT 10:00 AM



****ONSITE-LIVE AUCTION****

2 AUCTIONS - 1 DAY



1- CHANGE OF OPERATIONS AUCTION

MCCAR TRUCKING

2- TOTAL DISPOSITION AUCTION

TIKI TEXAS LOGISTICS

36 SIMPLE 18 DUMP TRUCKS, 5 CONCRETE TRUCKS, CONSTRUCTION
EQUIPMENT, TRUCK TRACTORS, DUMP TRAILERS



BUSHNELL, FLORIDA

****TIMED AUCTION****

**OPENS: FRIDAY, SEPTEMBER 15TH AT 9:30 AM
CLOSES: FRIDAY, SEPTEMBER 29TH AT 9:30 AM**



PART 2 OF ACQUISITION OF

AHERN RENTALS



EXTRA LARGE LATE MODEL RENTAL

CONSTRUCTION EQUIPMENT

UNITED RENTALS - AHERN RENTALS

LATE MODEL CONSTRUCTION, UTILITY EQUIPMENT, AERIALS, FORKLIFTS,
SKID STEERS, ACCESSORIES, TRUCKS OF ALL KINDS, TRAILERS



ALEX LYON & SON SALES MANAGERS & AUCTIONEERS, INC.

2023

7697 ROUTE 31, PO BOX 610, BRIDGEPORT, NY 13030 315-633-2944 FAX: 315-633-8010 LYONAUCTION.COM

TIMED AUCTION

Please feel free to preview any of our Live or Timed Auction sale sites 5 days before auction day!

HOUSTON, TEXAS

OPENS: SATURDAY, SEPTEMBER 2ND AT 10:00 AM - CLOSES: TUESDAY, SEPTEMBER 12TH AT 1:00 PM

ADDRESS: 7600 S Santa Fe Dr. Building C, Houston Texas 77061. **In conjunction with PPL Auctions and Plant & Machinery Inc.** **SALE SITE PHONE:** (262) 903-6269 Chad. **TEXAS LICENSE:** #15791 Jack Lyon. **TERMS & CONDITIONS:** "Cash or Company Check" accompanied by current "Bank Letter of Guarantee", made payable to Alex Lyon & Son. Everything Sells "AS IS, WHERE IS." The following charges will apply on all purchases: a 12% administration fee will be assessed when paying with cash or good check. (The standard fee of 15% will be assessed when paying with credit card). The Bidder is responsible for knowing which item he/she is bidding on. If he/she is unsure, he/she should inquire or not bid. When you become the winning bidder at auction you have effected a contract and will be expected to pay for items in which you were evidenced to be the successful bidder. Auctioneer will not honor "mistakes"



FOR BID ONLINE TECHNICAL ASSISTANCE CALL
Proxibid: (855) 636-6461
Nextlot: (919) 361-1111



LOT 101: KOMATSU WA250-3MC RUBBER TIERED LOADER SN:A71244 powered by Komatsu diesel engine, equipped with OROPS, hydraulic coupler, GP bucket, 20.5R25 rubber.

LOT 101A: FORKS RUBBER TIERED LOADER ATTACHMENT for above machine.



LOT 102: KOMATSU D61PX-12 CRAWLER TRACTOR SN:B1660 powered by Komatsu diesel engine, equipped with OROPS, 6 way blade, wide pads. Unit is not running.



LOT 103: KOMATSU WA250-3MC RUBBER TIERED LOADER SN:A71238 powered by Komatsu diesel engine, equipped with OROPS, hydraulic coupler, GP bucket, 20.5R25 rubber.

LOT 103A: FORKS RUBBER TIERED LOADER ATTACHMENT for above machine.



LOT 104: 2014 BOBCAT E35 HYDRAULIC EXCAVATOR SN:11119 powered by Kubota diesel engine, equipped with OROPS, swing boom, auxiliary hydraulics, rubber tracks, push blade, coupler, digging bucket.



LOT 105: CHEM-GROUT CG500 GROUT PLANT skid mounted.



LOT 106: JOHN DEERE 310D TRACTOR LOADER BACKHOE SN:804714 powered by John Deere diesel engine, equipped with OROPS, 2-stick control, extendahoe, GP front bucket, rear digging bucket, unit will run but needs work.



LOT 107: CAT 330CL HYDRAULIC EXCAVATOR SN:DKY00865 powered by Cat diesel engine, equipped with Cab, air, heat, reach boom, 10ft. 10in. stick, 34in. pads, digging bucket, long undercarriage.



LOT 108: KOMATSU PC600LC-6 HYDRAULIC EXCAVATOR SN:11058 powered by Komatsu diesel engine, equipped with cab, air, heat, 10ft. stick, 36in. pads, hydraulic coupler, Hensley 6 yard digging bucket, long undercarriage.



LOT 109: JOHN DEERE TC INTEGRATED TOOL CARRIER SN:555359 powered by John Deere diesel engine, equipped with OROPS, hydraulic coupler, GP bucket, 20.5R25 rubber.

LOT 109A: FORKS TOOL CARRIER ATTACHMENT for above machine.

LOT 110: KOMATSU PC200LC-6LE HYDRAULIC EXCAVATOR SN:A85600 powered by Komatsu diesel engine, equipped with Cab, heat, reach boom, 10ft. stick, 32in. pads, digging bucket., long undercarriage.



LOT 111: CAT 345CL HYDRAULIC EXCAVATOR SN:TDG00362 powered by Cat diesel engine, equipped with Cab, air, 36in. pads, digging bucket, long undercarriage. No hydraulic pump, not running.



LOT 112: CAT 385BL HYDRAULIC EXCAVATOR SN:ANS00333 powered by Cat diesel engine, equipped with Cab, air, heat, 34in. pads, hydraulic coupler, digging bucket, long undercarriage.



LOT 113: CAT SR4B GENERATOR SN:8CK00615 powered by Cat 3304 diesel engine, equipped with 175KW, skid mounted. Not running.



LOT 114: CAT SR4B GENERATOR powered by Cat 3304 diesel engine, equipped with 175KW, skid mounted. Not running.



LOT 115: KOHLER 20RE0ZJB GENERATOR SN:788374 powered by diesel engine, equipped with 23KW, trailer mounted.



LOT 116: MULTIQUIP DCA25 GENERATOR SN:7151568 powered by diesel engine, equipped with 20KW, trailer mounted.



LOT 117: 2015 WACKER G35 GENERATOR SN:1841547 powered by diesel engine, equipped with 20KW, trailer mounted.



LOT 118: SULLAIR 185CFM AIR COMPRESSOR SN:144864 powered by John Deere diesel engine, equipped with 185CFM, trailer mounted.



LOT 119: MAGNUM PRO MLT3060M LIGHT PLANT SN:1401795 powered by diesel engine, equipped with 4-1,000 watt lightbulbs, 6KW, trailer mounted.

LOT 120: TEREX AL4000 LIGHT PLANT SN:AL411-847 powered by diesel engine, equipped with 4-1,000 watt lightbulbs, 6KW, trailer mounted.

LOT 121: KOMATSU PC650LC-8EO HYDRAULIC EXCAVATOR powered by Komatsu diesel engine, equipped with Cab, boom, 36in. Pads. Unit not running.



LOT 122: AMERICAN 7250 CRAWLER CRANE SN:7910A02196 powered by diesel engine, equipped with 60 ton capacity, boom, steel tracks. Engine not in unit, the engine, goes with unit.



LOT 123: CAT 322BL HYDRAULIC EXCAVATOR SN:1YS01415 powered by Cat diesel engine, equipped with Cab, air, heat, reach boom, 10ft. stick, 32in. pads, digging bucket, long undercarriage.



LOT 124: AM GENERAL WATER TRUCK SN:10246 6x6, powered by diesel engine, equipped with automatic transmission, 4,000 gallon water tank, tandem axle. Unit not working.

LOT 125: FRAC TANK equipped with skid mounted.

LOT 126: 8FT. X 28FT. TRENCH BOX

LOT 126A: 8FT. X 28FT. TRENCH BOX

LOT 127: 8FT. X 16FT. TRENCH BOX

LOT 127A: 8FT. X 24FT. TRENCH BOX

LOT 128: LINKBELT LS98A CRAWLER CRANE

SN:1LP1534H powered by Detroit diesel engine, equipped with 30 ton capacity, boom, steel tracks

LOT 129: KOEHRING LRT275D ROUGH TERRAIN CRANE SN:80008 powered by diesel engine, equipped with Cab, 27.5 ton capacity, 72ft. reach.



LOT 130: KOEHRING LRT110 ROUGH TERRAIN CRANE SN:98798 powered by Cummins diesel engine, equipped with Cab, 7.5 ton capacity, 36ft. reach.



LOT 131: KOEHRING LRT275D ROUGH TERRAIN CRANE SN:79962 powered by diesel engine, equipped with Cab, 27.5 ton capacity, 72ft. reach.



LOT 132: AMERICAN 5299 CRAWLER CRANE SN:6517620 powered by Detroit diesel engine, equipped with cab, 50 ton capacity, boom, steel tracks.



LOT 133: HPSI 260 PILE DRIVER SN:HPS0959 powered by Cat 3406 hydraulic power pack, 355hp, 5,000PSI, equipped with 2,600 in lb exciter, all skid mounted.



LOT 134: CAT D4KLP CRAWLER TRACTOR SN:RRR00415 powered by Cat diesel engine, equipped with OROPS, sweeps, screen, 6 way blade. Unit not running.



LOT 135: HOMEMADE CARGO TRAILER VN:451541 equipped with 14ft. length, side door, tandem axle.



LOT 136: 2012 GMC 1500 SIERRA PICKUP TRUCK
VN:240807 powered by 4.8L gas engine, equipped with automatic transmission, a/c, power locks, 4-door, short box.



LOT 137: 2012 GMC 1500 SIERRA PICKUP TRUCK
VN:261632 powered by 4.8L gas engine, equipped with automatic transmission, a/c, power locks, 4-door, short box.

LOT 138: 2000 FREIGHTLINER FL70 FLATBED TRUCK
VN:N/A powered by Mercedes diesel engine, equipped with 6 speed transmission, flatbed body, 22.5 tires, single axle.



LOT 139: CAT SR4B GENERATOR SN:E46PW813 powered by Cat 3304 diesel engine, equipped with 175KW, skid mounted.



LOT 140: 2013 TAKEUCHI TB235 HYDRAULIC EXCAVATOR SN:123503314 powered by diesel engine, equipped with Cab, front blade, swing boom, auxiliary hydraulics, rubber tracks, digging bucket.



LOT 141: 2007 INGERSOLL RAND G60 GENERATOR
SN:373033 powered by John Deere diesel engine, equipped with 60KW, trailer mounted, tandem axle.



LOT 142: 2004 SHEET PILE DRIVER SN:04U166 powered by John Deere 4045 hydraulic power pac, equipped with excavator mount, hydraulic driven.



LOT 143: CAT CP433B VIBRATORY ROLLER
SN:1MG00514 powered by Cat diesel engine, equipped with OROPS, 66in. padfoot drum, vibratory drum, drum drive.



LOT 144: CAT 350L HYDRAULIC EXCAVATOR
SN:9FL00929 powered by Cat diesel engine, equipped with Cab, reach boom, stick, 36in. pads, long undercarriage. Unit not running.



LOT 145: CAT XQ600 GENERATOR SN:81Z18295 powered by Cat diesel engine, equipped with trailer mounted tandem axle. Unit not running.

LOT 146: ROSCO RB-48 SWEEPER SN:45155 powered by diesel engine, equipped with EROPS, 8ft sweeper, water system. Unit not running.

LOT 147: LAYMOR SM300 SWEEPER SN:35532 powered by Kubota diesel engine, equipped with ROPS, 8ft. sweeper, water system, towable. Unit not running.

LOT 148: KOMATSU PC400LC-7EO HYDRAULIC EXCAVATOR SN:A87524 powered by Komatsu diesel engine, equipped with Cab, reach boom, 10ft. stick, 32in. pads, digging bucket, long undercarriage.

LOT 149: CAT 350L HYDRAULIC EXCAVATOR
SN:3ML00521 powered by Cat diesel engine, equipped with Cab, reach boom, 36in. pads, digging bucket, long undercarriage.



LOT 150: 2007 KOMATSU PC400LC-7EO HYDRAULIC EXCAVATOR SN:A87485 powered by Komatsu diesel engine, equipped with Cab, reach boom, 10ft. stick, 36in. pads, digging bucket, long undercarriage.
LOT 151: KOEHRING LRT110 ROUGH TERRAIN CRANE SN:98671 powered by Cummins diesel engine, equipped with Cab, 7.5 ton capacity, 36ft. reach.



LOT 152: MULTIQUIP DCA25 GENERATOR
SN:8104943 powered by diesel engine, equipped with 20KW, trailer mounted.



LOT 153: TEREX RT555 ROUGH TERRAIN CRANE
SN:16402 powered by diesel engine, equipped with Cab, 55 ton capacity, 110ft. reach, dual winch, 26.5-25 rubber.



****ONSITE-LIVE & TIMED AUCTIONS****

Please feel free to preview any of our Live or Timed Auction sale sites 5 days before auction day!

ASHTABULA, OHIO - WED, SEPTEMBER 13TH AT 9:30 AM - THUR, SEPTEMBER 14TH AT 9:30 AM

ADDRESS: 6000 Woodman Ave., Ashtabula, OH 44004. **NOTE:** Due to unbelievable April growth, necessity warrants selling the following equipment that is not needed in on going operations. **SALE SITE PHONE:** (315) 633-2944. **OHIO AUCTION LICENSE:** 63199360809. **OHIO AUCTIONEER LICENSE:** 62199360989 Jack H. Lyon. **TERMS & CONDITIONS:** UPDATE: Cash payment will only be accepted on sale day. After sale day, all items must be paid for by Certified Check, Wire Transfer, or Credit Card. "Certified Check" made payable to Alex Lyon & Son. Everything Sells "AS IS, WHERE IS." *The following charges will apply on all purchases:* (1.) For each unit \$45,001.00 and above, a 5.99% administration fee will be assessed when paying with Cash, Certified Check, or Wire Transfer. (The standard fee of 8.99% will be assessed when paying with credit card); (2.) For each unit \$1,001- \$45,000, a 10% administration fee will be assessed when paying with Cash, Certified Check, or Wire Transfer. (The standard fee of 13% will be assessed when paying with credit card); (3.) For each unit \$0- \$1,000, a 12.5% administration fee will be assessed when with Cash, Certified Check, or Wire Transfer. (The standard fee of 15.5% will be assessed when paying with credit card). ****Please NOTE: An additional fee may be assessed when bidding online**** The Bidder is responsible for knowing which item he/she is bidding on. If he/she is unsure, he/she should inquire or not bid. When you become the winning bidder at auction you have effected a contract and will be expected to pay for items in which you were evidenced to be the successful bidder. Auctioneer will not honor "mistakes".



FOR BID ONLINE TECHNICAL ASSISTANCE CALL
Proxibid: (855) 636-6461
Nextlot: (919) 361-1111

IMPACT CRUSHER



SCREEN MACHINE 4034T powered by 6 cylinder diesel engine, equipped with vibrating grizzly feeder, 6ft. X 14ft. feed hopper, 48in. discharge conveyor with 32in. x 7ft. cross belt magnet, 23.5in. TBG pads, track mounted.

JAW CRUSHER

AUSTIN WESTERN SN:2216 electric motor, skid mounted.

HORIZONTAL GRINDER



PROTO GRIND 1200L powered by Cummins diesel engine, 425hp, equipped with operators Cab, 60in. rear discharge conveyor, 255/70R22.5 tires, tandem axle, 2,798 hours.

SCREENING PLANTS



IROCK TS-522 SN:3D05M5222016 powered by Cat C4.4 diesel engine, equipped with 14ft. x 7ft. feed hopper with self cleaning grizzly, 42in. under hopper feed conveyor, 42in. inclined screen box feed conveyor, (2) hydraulic folding 30in. side product conveyors, double deck inclined screen with 22ft. x 5ft. top deck and 20'ft. x 5ft. bottom deck, 48in. tail conveyor, 20in. TBG pads, track mounted.



KOLMAN ATHEY PORTABLE single axle.

4 AGGREGATE EQUIPMENT



MATERIAL PROCESSOR powered by Cat C15 diesel engine, 700hp, equipped with dual rotor, 30in. TBG pads, track mounted.
10FT. X 10FT. HOPPER plate feeder, 5hp electric motor.
12FT. X 6FT. HOPPER with 40in. feed belt, skid mounted.
5FT. X 10FT. SINGLE DECK SCREEN BOX

CAR CRUSHER

AI JON SN:12129 powered by Detroit diesel engine, equipped with hydraulic leveling legs, 11R22.5 tires, tandem axle.

ROUGH TERRAIN CRANE

GROVE RT595 SN:37170 4x4, powered by Cummins diesel engine, equipped with ECAB, 15 ton lift capacity, 28ft.-70ft. telescoping boom, single winch, 4-hydraulic outriggers, 3 sheave hook block, 16.00-24 TG rubber.

HYDRAULIC EXCAVATORS

KOBELCO SK250LC SN:LL08-U0552 powered by Mitsubishi diesel engine, equipped with Cab, 31.5in. TBG pads, Geith 54in. digging bucket, long undercarriage.
TEREX-SCHAEF SN:001100/0265 powered by Mitsubishi diesel engine, equipped with OROPS, swing boom, front blade, auxiliary hydraulics, 9in. rubber tracks, 12in. digging bucket, 1,541 hours.

HYDRAULIC HAMMERS

HUGHES

GRAPPLE



SEC 5-TYNE HYDRAULIC SCRAP

15 EXCAVATOR BUCKETS

- SEC 84IN. DITCHING BUCKET
- SEC 72IN. SKELETON BUCKET
- ESCO 60IN. DIGGING BUCKET
- ESCO 42IN. DIGGING BUCKET
- W-R 36IN. DIGGING BUCKET with tilting coupler.
- W-R 30IN. DIGGING BUCKET
- W-R 20IN. DIGGING BUCKET W/ TILTING COUPLER
- 60IN. DITCHING BUCKET
- 48IN. DITCHING BUCKET
- 36IN. DIGGING BUCKET
- 30IN. V DIGGING BUCKET
- 30IN. DIGGING BUCKET
- 24IN. DIGGING BUCKET
- 22IN. DIGGING BUCKET
- ACS 24IN. V DIGGING BUCKET

EXCAVATOR ATTACHMENTS

- GEITH HYDRAULIC COUPLER
- JB-HENDRIX HYDRAULIC COUPLER



4 RUBBER TIRED LOADERS

JOHN DEERE 644B SN:22740T powered by John Deere diesel engine, equipped with EROPS, GP bucket w/ edge, 20.5 x 25 rubber.

JOHN DEERE 644A SN:176515 powered by John Deere diesel engine, equipped with EROPS, GP bucket w/ edge, 17.5 x 25 rubber.

JOHN DEERE 544A SN:125718 powered by John Deere diesel engine, equipped with EROPS, GP bucket w/ BOCE, 17.5 x 25 rubber.

WEYHAUSEN 65 C14C SN:2031210E102058C1 powered by Deutz diesel engine, equipped with EROPS(no glass), quick coupler, GP bucket w/ edge, 12.5 x 20 MPT rubber.

CRAWLER TRACTORS



KOMATSU D37-21 SN:5125 powered by Komatsu diesel engine, equipped with EROPS, air, 6 way blade, 15.5in. Pads, rear drawbar.

CASE 1450B SN:8381826 powered by Case diesel engine, equipped with OROPS, sweeps, rear screen, Straight blade w/ tilt, 22in. Pads, rear drawbar.

CRAWLER TRACTOR ATTACHMENT

ALLIED W-30

ASPHALT ROLLER

HYPAC C778B powered by Cummins diesel engine, equipped with OROPS, 78in. Smooth drum, vibratory drum, double drum, drum drive, water system.

SKID STEER

BOBCAT 863 powered by 4 cylinder diesel engine, equipped with rollcage, auxiliary hydraulics, mechanical quick coupler, hand & foot controls, GP bucket, 12-16.5NHS rubber.

5 SKID STEER ATTACHMENTS

CONCRETE PLACEMENT BUCKET

80IN. BUCKET W/ TEETH

48IN. PALLET FORKS

ATTACH FRAME

TRAILER MOVER

TELESCOPIC FORKLIFT

2011 GENIE GTH-644 SN:14550 4x4, powered by diesel engine, equipped with EROPS, 6,000lb lift capacity, 44ft. Reach height, 48in. forks, 13.00-24 TG rubber.

4 FORKLIFTS

CAT T150D SN:5MB00883 powered by LP engine, equipped with OROPS, 2-stage, hydraulic sideshift, solid tires.

CLARK C500Y50 SN:Y355-592-2543 powered by LP engine, equipped with OROPS, 2 stage mast.

TOWMOTOR 601PLP4024 SN:601P0394 powered by gas engine, equipped with OROPS, 4,000lb capacity, 36in. forks, dual front wheels, pneumatic tires.

TOWMOTOR LT60FM SN:605268 powered by gas engine, equipped with OROPS, 2-stage mast, 48in. forks, pneumatic tires.

3 TRACTOR LOADER BACKHOE ATTACHMENTS

24IN. DIGGING BUCKET

4-IN-1 BUCKET W/ TEETH coupler attach.

18IN. DIGGING BUCKET

TRACTOR ATTACHMENT

72IN. BRUSH HOG

LOG SKIDDER/BOOM LIFTS

TIMBERJACK 240E powered by John Deere 4 cylinder diesel engine, equipped with OROPS, screens, front blade with root rake, Altec LRV56 boom, 56ft. platform height, insulated, 2 hydraulic outriggers, 23.1-26 rubber.

TIMBERJACK 240E SN:841773 powered by John Deere 4 cylinder diesel engine, equipped with OROPS, screens, front blade with root rake, Altec LRV56 boom, 56ft. platform height, insulated, 2 hydraulic outriggers, 23.1-26 rubber.

LOG LOADER

HOOD LUMBERAGATOR powered by Mitsubishi diesel engine, equipped with OROPS, 28in. rubber tracks, Hood 418 loading boom, hydraulic rotating grapple, Does not run.

WOOD CHIPPERS

BRUSH BANDIT no chassis.

EAGER BEAVER powered by Cummins diesel engine, equipped with Twin Disc PTO, 9.50-16.5LT tires, single axle.

CONCRETE EQUIPMENT

MORTAR MIXER powered by gas engine, trailer mounted.

FIRE TRUCK

1989 EMERGENCY ONE VN:46JBBAA87K1003024 powered by diesel engine, equipped with automatic transmission, Emergency One QSMG150-21 body, Hale E-1 7480 pump, 1500 gallon capacity, 11R22.5 tires, polished aluminum wheels, dual wheel single axle, 35,858 miles.

SERVICE TRUCK

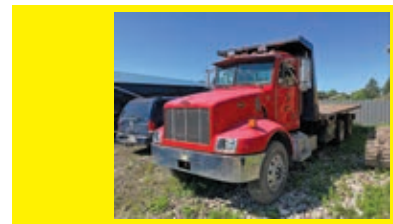


2009 FORD F750XL VN:3FRWX75C19V196247 powered by Cummins ISB 6.7 liter diesel engine, equipped with automatic transmission, power steering, extended cab, 12ft. service body w/ aluminum storage racks, 11R22.5 tires, polished aluminum wheels, dual wheel single axle.

TOOL TRUCK

1998 FREIGHTLINER FL60 VN:1FV6GJACXWH970859 powered by Cat 3126 diesel engine, equipped with 6 speed transmission, US Trailer Mdl ASB aluminum walk in body, pullout ramp, extended cab, 25,500lb GVWR, 11R22.5 tires, polished aluminum wheels, dual wheel single axle, 71,506 miles.

ROLLBACK TRUCK



2001 PETERBILT PB330 VN:2NPNHZ7X41M566343 powered by Cummins ISC285 diesel engine, equipped with Eaton Fuller RT8709B transmission, power steering, 28ft. steel body, winch, cab protector, 53,000lb GVWR, 20,000lb air lift pusher axle, air ride suspension, 11R22.5 front & rear tires, 255/70R22.5 pusher tires, polished aluminum wheels, dual wheel single axle.

4 ROLLOFF TRUCKS

2007 MACK CV713 VN:1M2AG11CM056258 powered by Mack AMI 12 liter diesel engine, equipped with Maxitorque 10 speed transmission, power steering, Rudco O/R TRI body, SN HRP71234, 75000# capacity, Roll-Rite load cover system, camelback spring suspension, air lift pusher axle, 315/80R22.5 front and pusher tires, 11R22.5 rear tires, polished aluminum front wheels, triaxle.

2006 MACK CV713 GRANITE

VN:1M2AG11C76M027563 powered by Mack AMI 12 liter diesel engine, equipped with Maxitorque 10 speed transmission, power steering, Galbreath body, Roll-Rite load cover system, 18,000lb pusher, 44,000lb rears, camelback spring suspension, air lift pusher axle, 315/80R22.5 front tires, 11R2205 rear tires, 275/80R22.5 pusher tires, triaxle, 213,759 miles.

2004 MACK CV713 GRANITE

VN:1M2AG11C34M011549 powered by Mack AMI 12 liter diesel engine, equipped with Road Ranger 8LL transmission, power steering, Galbreath U5-OR-174 body, SN H20807, Roll-Rite load cover system, camelback spring suspension, 315/80R22.5 tires, polished aluminum front wheels, tandem axle.

2003 INTERNATIONAL 7500 VN:1HTWNADT63J054586 powered by International DT530 diesel engine, equipped with Road Ranger 8LL transmission, power steering, roll back body w/ Hi-Tower load cover system, rubber block suspension, 385/65R22.5 front tires, 11R22.5 rear tires, polished aluminum front wheels, tandem axle.

DUMP TRUCKS

1999 INTERNATIONAL 5000 VN:1HTTGAHT3XJ003897 powered by Cummins N14 long block diesel engine, equipped with Road Ranger 8LL transmission, power steering, R/S 21ft. aluminum body w/ steel tailgate, 85,000lb rear, spring rear suspension, (3) air lift steerable pusher axles, 425/65R22.5 front tires, 11R22.5 rear tires, 255/70R22.5 pusher tires, polished aluminum wheels, 6-axles.



1999 INTERNATIONAL 5000 VN:1HTTGAHT5XJ003898 powered by Cummins ISM diesel engine, equipped with Road Ranger 8LL transmission, power steering, R/S 21ft. aluminum body w/ steel tailgate, 85,000lb rears, (3) air lift steerable pusher axles, spring rear suspension, 425/65R22.5 front tires, 11R22.5 rear tires, 255/70R22.5 pusher tires, polished aluminum wheels, 6-axles.

5 TRUCK TRACTORS

2012 PETERBILT 384 VN:1XPVD79X4CD134590 no engine, equipped with air ride suspension, 275/80R22.5 front tires, 445/50R22.5 single rear tires, polished aluminum wheels, tandem axle.

2003 PETERBILT 357 VN:1NPADBOX23D807210 powered by Cat diesel engine, equipped with Eaton Fuller transmission, Stury Lite aluminum headache rack, 18,000lb pusher, 46,000lb rears, rubber block suspension, air lift steerable pusher axle, 385/65R22.5 front tires, 11R24.5 rear tires, 315/80R22.5 pusher tires, polished aluminum wheels, triaxle.

2001 INTERNATIONAL 9200I VN:3HSCEAHR3YN056564 powered by Cummins M11 diesel engine, equipped with Eaton Fuller 10 speed transmission, power steering, 2-line wet system, air ride suspension, 11R22.5 tires, tandem axle.

1996 VOLVO WCR64T VN:4V4VDBGH8TN732096 powered by Volvo D12-425VT diesel engine, equipped with Eaton Fuller 10 speed transmission, power steering, air ride suspension, 11R22.5 tires, tandem axle.

KAISER JEEP M35A2 VN:83K8380840-10377 6x6, powered by diesel engine, equipped with 5 speed transmission, 9.00-20 tires, tandem axle, 23,174 miles.

DETACHABLE GOOSENECK TRAILER

VN:N/A equipped with 102in. X 21.5ft. Level deck, steel deck, non ground bearing, NGB, 255/70R22.5 tires, tandem axle.

EQUIPMENT TRAILERS



VN:N/A equipped with 102in. X 36ft. main deck with 9ft. upper deck, winch, 215/75R17.5 tires, sliding tandem axle.
VN:N/A equipped with 102in. x 38ft. main deck, 10ft. upper deck, hydraulic folding tail, winch, air ride suspension, 255/70R22.5 tires, tandem axle.

4 TAGALONG TRAILERS

APPALACHIAN 18FT. VN:N/A equipped with 18ft. Deck, rear ramps, LT235/85R16 tires, tandem axle. Missing front axle tires.

18FT. VN:N/A equipped with 18ft. x 96in. Tilt deck, 7.50-15 TR tires, tandem axle.

16FT. VN:N/A equipped with 16ft. Wood deck, LT235/75R15 tires, tandem axle.

GENERAL VN:9D72444 equipped with 8ft. x 15ft. deck with 4ft. beaver tail, rear ramps, single wheels, 8-14.5 tires, tandem axle.

FLATBED TRAILER

1997 TRANSCRAFT TL2000 VN:1TTF45208V1054127 equipped with 45ft. X 96in. Wood Flatbed body, air ride suspension, wood deck, headboard, 11R24.5 tires, tandem spread axle.

ROLLOFF TRAILER

2005 GALBREATH U5-10-175 SN:H23131 equipped 60,000lb capacity, spring suspension, load cover system, 315/80R22.5 tires, tandem axle.

BOAT

18FT. ALUMINUM with single axle boat trailer.

3 DUMP BODIES

18.5FT. STEEL 2 way tail gate.
12FT. 6IN. STEEL
 ARBORTECH SN:15-0064

UTILITY BODY

8FT. STEEL WELD with cover, ladder rack.

ROLLOFF CONTAINER



QTY OF ROLLOFF CONTAINERS

SCRAP RECYCLING EQUIPMENT

LARGE QTY OF SELF TIPPING HOPPER

SCRAP METAL

LARGE QTY OF UNUSED STEEL SCRAP assorted sizes.

STEEL BEAM

LARGE QTY OF STRUCTURAL STEEL I-BEAMS

TRENCH BOX

8FT. X 20FT. X 6IN. STEEL no spreaders.

3 HAMMERMILL TAKEOUTS



MULTIPLE 10HP-1000HP ELECTRIC MOTORS



MULTIPLE HAMMERMILL METAL SHREDDERS



MULTIPLE MAGNETIC SEPERATORS

MACHINE SHOP CLOSEOUTS

LARGE QTY OF ASSORTED MODEL WELDERS
PLASMA CUTTING TABLE

WATER WELL DRILLING

LARGE QTY OF WELL DRILLING PIPE
WELL DRILLING ROLLER BITS some new.

SNOW EQUIPMENT

UNUSED 8FT. SNOW PUSHER W/ EDGE

ENGINE

DOZENS OF RUNNING DIESEL TAKEOUTS

3 FUEL TANKS



(3) ROTH 1000L NON METALLIC OIL BURNER

TIRES, NEW & USED

LARGE QTY OF 11R22.5 X 11R24.5 mounted in good condition.

SUPPORT EQUIPMENT

AGROTEC SPRAYER TANK with electric motor and pump.

DI-ACRO 75T-8 8FT. PRESS BRAKE SN:1088302 3 PH, 208 Volt, with Pinnacle Microguard, Di-Acro CNC gauging system.

OPENS: FRIDAY, SEPTEMBER 1ST AT 12:00 PM
CLOSES: FRIDAY, SEPTEMBER 15TH AT 12:00 PM

DUE TO TIME CONSTRAINTS, SO MUCH EQUIPMENT BEING ADDED DAILY, PLEASE REFER TO LYONAUCTION.COM FOR UPDATED LISTING.



****ONSITE-LIVE AUCTION****

Please feel free to preview any of our Live or Timed Auction sale sites 5 days before auction day!

AUSTIN, TEXAS - WEDNESDAY, SEPTEMBER 20TH AT 10:00 AM

ADDRESS: 777 County Route 131, Hutto, Texas 70634. **NOTE:** McCar Trucking, a highly successful quarry and trucking operation, has decided to spend more time providing more material to satisfy customer needs, will sell our entire late model fleet - mostly 2023-2022 equipment. Also selling will be dump trucks, truck tractors and dump trailers from Tiki Texas Logistics. Extra Note: All the McCar trucks are low mileage and have long extended warranty and are simple 18s. **SALE SITE PHONE:** (262) 903-6269 Chad. **TEXAS LICENSE:** #15791 Jack Lyon. **TERMS & CONDITIONS:** **UPDATE: Cash payment will only be accepted on sale day. After sale day, all items must be paid for by Certified Check, Wire Transfer, or Credit Card.** "Certified Check" made payable to Alex Lyon Et Son. Everything Sells "AS IS, WHERE IS." *The following charges will apply on all purchases:* (1.) For each unit \$45,001.00 and above, a 5.99% administration fee will be assessed when paying with Cash, Certified Check, or Wire Transfer. (The standard fee of 8.99% will be assessed when paying with credit card); (2.) For each unit \$1,001- \$45,000, a 10% administration fee will be assessed when paying with Cash, Certified Check, or Wire Transfer. (The standard fee of 13% will be assessed when paying with credit card); (3.) For each unit \$0- \$1,000, a 12.5% administration fee will be assessed when with Cash, Certified Check, or Wire Transfer. (The standard fee of 15.5% will be assessed when paying with credit card). ****Please NOTE: An additional fee may be assessed when bidding online**** The Bidder is responsible for knowing which item he/she is bidding on. If he/she is unsure, he/she should inquire or not bid. When you become the winning bidder at auction you have effected a contract and will be expected to pay for items in which you were evidenced to be the successful bidder. Auctioneer will not honor "mistakes".



FOR BID ONLINE TECHNICAL ASSISTANCE CALL
Proxibid: (855) 636-6461
Nextlot: (919) 361-1111

38 DUMP TRUCKS



2023 FREIGHTLINER 122SD SIMPLE 18 VN:UK9363 powered by Detroit DD13 diesel engine, 505hp, equipped with Allison 4500 RDS automatic transmission, a/c, double frame, 20ft. Heritage aluminum dump body, bedliner, sliding tarp, 310in. wheelbase, Hendrickson suspension, 20,000lb front axle, 46,000lb rears, aluminum wheels, 425/65R22.5 front tires, 11R22.5 rear tires, 4-steerable air lift axles with 215/75R17.5 tires, 6-rear axles, 26,823 miles. Remaining Warranties: EW4 2/24/28, Climate Control 2/24/28, Towing/Roadside Service 2/24/25, Allison Transmission 2/24/28, Chassis Coverage 2/24/24.



2023 FREIGHTLINER 122SD SIMPLE 18 VN:UK9362 powered by Detroit DD13 diesel engine, 505hp, equipped with Allison 4500 RDS automatic transmission, a/c, double frame, 20ft. Heritage aluminum dump body, bedliner, sliding tarp, 310in. wheelbase, Hendrickson suspension, 20,000lb front axle, 46,000lb rears, aluminum wheels, 425/65R22.5 front tires, 11R22.5 rear tires, 4-steerable air lift axles with 215/75R17.5 tires, 6-rear axles, 11,134 miles. Remaining Warranties: EW4 6/19/28, Climate Control 6/19/28, Towing/Roadside Service 6/19/25, Allison Transmission 6/19/28, Chassis Coverage 6/19/24.



2023 FREIGHTLINER 122SD SIMPLE 18 VN:UN8673 powered by Detroit DD13 diesel engine, 505hp, equipped with Allison 4500 RDS automatic transmission, a/c, double frame, 20ft. Heritage aluminum dump body, bed liner, sliding tarp, 310in. wheelbase, Hendrickson suspension, 20,000lb front axle, 46,000lb rears, aluminum wheels, 425/65R22.5 front tires, 11R22.5 rear tires, 4-steerable air lift axles with 215/75R17.5 tires, 6-rear axles, 10,457 miles. Remaining Warranties: EW4 6/19/28, Climate Control 6/19/28, Towing/Roadside Service 6/19/25, Allison Transmission 6/19/28, Chassis Coverage 6/19/24.



2023 FREIGHTLINER 122SD SIMPLE 18 SN:UN8669 powered by Detroit DD13 diesel engine, 505hp, equipped with Allison 4500 RDS automatic transmission, a/c, double frame, 20ft. Heritage aluminum dump body, bed liner, sliding tarp, 310in. wheelbase, Hendrickson suspension, 20,000lb front axle, 46,000lb rears, aluminum wheels, 425/65R22.5 front tires, 11R22.5 rear tires, 4-steerable air lift axles with 215/75R17.5 tires, 6-rear axles, 9,644 miles. Remaining Warranties: EW4 6/19/28, Climate Control 6/19/28, Towing/Roadside Service 6/19/25, Allison Transmission 6/19/28, Chassis Coverage 6/19/24.



2023 FREIGHTLINER 122SD SIMPLE 18 VN:UN8671 powered by Detroit DD13 diesel engine, 505hp, equipped with Allison 4500 RDS automatic transmission, a/c, double frame, 20ft. Heritage aluminum dump body, bedliner, sliding tarp, 310in. wheelbase, Hendrickson suspension, 20,000lb front axle, 46,000lb rears, aluminum wheels, 425/65R22.5 front tires, 11R22.5 rear tires, 4-steerable air lift axles with 215/75R17.5 tires, 6-rear axles, 7,613 miles. Remaining Warranties: EW4 6/19/28, Climate Control 6/19/28, Towing/Roadside Service 6/19/25, Allison Transmission 6/19/28, Chassis Coverage 6/19/24.



2023 FREIGHTLINER 122SD SIMPLE 18 VN:UN8670 powered by Detroit DD13 diesel engine, 505hp, equipped with Allison 4500 RDS automatic transmission, a/c, double frame, 20ft. Heritage aluminum dump body, bedliner, sliding tarp, 310in. wheelbase, Hendrickson suspension, 20,000lb front axle, 46,000lb rears, aluminum wheels, 425/65R22.5 front tires, 11R22.5 rear tires, 4-steerable air lift axles with 215/75R17.5 tires, 6-rear axles, 5,880 miles. Remaining Warranties: EW4 6/19/28, Climate Control 6/19/28, Towing/Roadside Service 6/19/25, Allison Transmission 6/19/28, Chassis Coverage 6/19/24.

2023 FREIGHTLINER 122SD SIMPLE 18 powered by Detroit DD13 diesel engine, 505hp, equipped with Allison 4500 RDS automatic transmission, a/c, double frame, 20ft. Heritage aluminum dump body, bedliner, sliding tarp, 310in. wheelbase, Hendrickson suspension, 20,000lb front axle, 46,000lb rears, aluminum wheels, 425/65R22.5 front tires, 11R22.5 rear tires, 4-steerable air lift axles with 215/75R17.5 tires, 6-rear axles, 3,973 miles. Remaining Warranties: EW4 6/19/28, Climate Control 6/19/28, Towing/Roadside Service 6/19/25, Allison Transmission 6/19/28, Chassis Coverage 6/19/24.





2023 FREIGHTLINER 122SD SIMPLE 18 VN:UN8666 powered by Detroit DD13 diesel engine, 505hp, equipped with Allison 4500 RDS automatic transmission, a/c, double frame, 20ft. Heritage aluminum dump body, bedliner, sliding tarp, 310in. wheelbase, Hendrickson suspension, 20,000lb front axle, 46,000lb rears, aluminum wheels, 425/65R22.5 front tires, 11R22.5 rear tires, 4-steerable air lift axles with 215/75R17.5 tires, 6-rear axles, 3,451 miles. Remaining Warranties: EW4 6/19/28, Climate Control 6/19/28, Towing/Roadside Service 6/19/25, Allison Transmission 6/19/28, Chassis Coverage 6/19/24.



2022 FREIGHTLINER 122SD SIMPLE 18 VN:ND9830 powered by Detroit DD15 14.8L engine, 505hp, equipped with Allison 4000 RDS automatic transmission, a/c, double frame, 20ft. 21yd steel Ox dump body, sliding tarp, 310in. wheelbase, Hendrickson suspension, 20,000lb front axle, 46,000lb rears, aluminum wheels, 425/65R22.5 front tires, 11R24.5 rear tires, 4-steerable air lift axles with 215/75R17.5 tires, 6-rear axles, 136,853 miles. Remaining Warranties: EW4 10/12/27, Allison Transmission 10/12/24.



2022 FREIGHTLINER 122SD SIMPLE 18 VN:ND9828 powered by Detroit DD15 14.8L engine, 505hp, equipped with Allison 4000 RDS automatic transmission, a/c, double frame, 20ft. 21yd steel Ox dump body, sliding tarp, 310in. wheelbase, Hendrickson suspension, 20,000lb front axle, 46,000lb rears, aluminum wheels, 425/65R22.5 front tires, 11R24.5 rear tires, 4-steerable air lift axles with 215/75R17.5 tires, 6-rear axles, 133,208 miles. Remaining Warranties: EW4 10/12/27, Allison Transmission 10/12/24.



2022 FREIGHTLINER 122SD SIMPLE 18 VN:ND9827 powered by Detroit DD15 14.8L engine, 505hp, equipped with Allison 4000 RDS automatic transmission, a/c, double frame, 20ft. 21yd steel Ox dump body, sliding tarp, 310in. wheelbase, Hendrickson suspension, 20,000lb front axle, 46,000lb rears, aluminum wheels, 425/65R22.5 front tires, 11R24.5 rear tires, 4-steerable air lift axles with 215/75R17.5 tires, 6-rear axles, 131,026 miles. Remaining Warranties: EW4 9/13/27, Allison Transmission 9/13/24.



2022 FREIGHTLINER 122SD SIMPLE 18 VN:ND9831 powered by Detroit DD15 14.8L engine, 505hp, equipped with Allison 4000 RDS automatic transmission, a/c, double frame, 20ft. 21yd steel Ox dump body, sliding tarp, 310in. wheelbase, Hendrickson suspension, 20,000lb front axle, 46,000lb rears, aluminum wheels, 425/65R22.5 front tires, 11R24.5 rear tires, 4-steerable air lift axles with 215/75R17.5 tires, 6-rear axles, 130,509 miles. Remaining Warranties: EW4 9/13/27, Allison Transmission 9/13/24.



2022 FREIGHTLINER 122SD SIMPLE 18 VN:ND9833 powered by Detroit DD15 14.8L engine, 505hp, equipped with Allison 4000 RDS automatic transmission, a/c, double frame, 20ft. 21yd steel Ox dump body, sliding tarp, 310in. wheelbase, Hendrickson suspension, 20,000lb front axle, 46,000lb rears, aluminum wheels, 425/65R22.5 front tires, 11R24.5 rear tires, 4-steerable air lift axles with 215/75R17.5 tires, 6-rear axles, 129,430 miles. Remaining Warranties: EW4 10/12/27, Allison Transmission 10/12/24.



2022 FREIGHTLINER 122SD SIMPLE 18 VN:ND9829 powered by Detroit DD15 14.8L engine, 505hp, equipped with Allison 4000 RDS automatic transmission, a/c, double frame, 20ft. 21yd steel Ox dump body, sliding tarp, 310in. wheelbase, Hendrickson suspension, 20,000lb front axle, 46,000lb rears, aluminum wheels, 425/65R22.5 front tires, 11R24.5 rear tires, 4-steerable air lift axles with 215/75R17.5 tires, 6-rear axles, 128,711 miles. Remaining Warranties: EW4 9/13/27, Allison Transmission 9/13/24.



2022 FREIGHTLINER 122SD SIMPLE 18 VN:ND9826 powered by Detroit DD15 14.8L engine, 505hp, equipped with Allison 4000 RDS automatic transmission, a/c, double frame, 20ft. 21yd steel Ox dump body, sliding tarp, 310in. wheelbase, Hendrickson suspension, 20,000lb front axle, 46,000lb rears, aluminum wheels, 425/65R22.5 front tires, 11R24.5 rear tires, 4-steerable air lift axles with 215/75R17.5 tires, 6-rear axles, 128,407 miles. Remaining Warranties: EW4 9/13/27, Allison Transmission 9/13/24.



2022 FREIGHTLINER 122SD SIMPLE 18 VN:NJ7470 powered by Detroit DD15 14.8L engine, 505hp, equipped with Allison 4000 RDS automatic transmission, a/c, double frame, 20ft. 21yd steel Ox dump body, sliding tarp, 310in. wheelbase, Hendrickson suspension, 20,000lb front axle, 46,000lb rears, aluminum wheels, 425/65R22.5 front tires, 11R24.5 rear tires, 4-steerable air lift axles with 215/75R17.5 tires, 6-rear axles, 122,999 miles. Remaining Warranties: EW4 1/3/27, Allison Transmission 1/3/25.





2022 FREIGHTLINER 122SD SIMPLE 18 VN:ND9832 powered by Detroit DD15 14.8L engine, 505hp, equipped with Allison 4000 RDS automatic transmission, a/c, double frame, 20ft. 21yd steel Ox dump body, sliding tarp, 310in. wheelbase, Hendrickson suspension, 20,000lb front axle, 46,000lb rears, aluminum wheels, 425/65R22.5 front tires, 11R24.5 rear tires, 4-steerable air lift axles with 215/75R17.5 tires, 6-rear axles, 122,909 miles. Remaining Warranties: EW4 10/12/27, Allison Transmission 10/12/24.



2020 FREIGHTLINER 122SD SIMPLE 18 VN:LL4038 powered by Detroit DD15 14.8L engine, 505hp, equipped with Allison 4000 RDS automatic transmission, a/c, double frame, 20ft. aluminum dump body, bedliner, sliding tarp, 297in. wheelbase, Hendrickson suspension, 20,000lb front axle, 46,000lb rears, aluminum wheels, 425/65R22.5 front tires, 11R24.5 rear tires, 4-steerable air lift axles with 215/75R17.5 tires, 6-rear axles, 286,873 miles. Remaining Warranty: EW4 11/12/26.



2023 WESTERN STAR 4900 SIMPLE 18 VN:NN6091 powered by Cummins X12 diesel engine, 500hp, equipped with Allison automatic transmission, a/c, 20ft. Heritage aluminum dump body, bedliner, sliding tarp, Hendrickson suspension, 20,000lb front axle, 46,000lb rears, aluminum wheels, 425/65R22.5 front tires, 11R24.5 rear tires, 4-steerable air lift axles with 215/75R17.5 tires, 6-rear axles, 73,346 miles. Remaining Warranties: Cummins X12 9/2/24, Allison Transmission 9/2/25.



2021 FREIGHTLINER 122SD SIMPLE 18 VN:MM8445 powered by Detroit DD15 14.8L engine, 505hp, equipped with Allison 4000 RDS automatic transmission, a/c, double frame, 20ft. 21yd steel Ox dump body, sliding tarp, 310in. wheelbase, Hendrickson suspension, 20,000lb front axle, 46,000lb rears, aluminum wheels, 425/65R22.5 front tires, 11R24.5 rear tires, 4-steerable air lift axles with 215/75R17.5 tires, 6-rear axles, 121,800 miles. Remaining Warranties: EW4 11/19/27, Towing/Roadside Service 11/19/23, Allison Transmission 11/19/24.



2020 FREIGHTLINER 122SD SIMPLE 18 VN:LL4037 powered by Detroit DD15 14.8L engine, 505hp, equipped with Allison 4000 RDS automatic transmission, a/c, double frame, 20ft. aluminum dump body, bedliner, sliding tarp, 297in. wheelbase, Hendrickson suspension, 20,000lb front axle, 46,000lb rears, aluminum wheels, 425/65R22.5 front tires, 11R24.5 rear tires, 4-steerable air lift axles with 215/75R17.5 tires, 6-rear axles, 254,865 miles. Remaining Warranty: EW4 11/12/26.



2023 WESTERN STAR 4900 SIMPLE 18 VN:NN6092 powered by Cummins X12 diesel engine, 500hp, equipped with Allison automatic transmission, a/c, 20ft. Heritage aluminum dump body, bedliner, sliding tarp, Hendrickson suspension, 20,000lb front axle, 46,000lb rears, aluminum wheels, 425/65R22.5 front tires, 11R24.5 rear tires, 4-steerable air lift axles with 215/75R17.5 tires, 6-rear axles, 58,934 miles. Remaining Warranties: Cummins X12 9/2/24, Allison Transmission 9/2/24.



2020 FREIGHTLINER 122SD SIMPLE 18 VN:LL4035 powered by Detroit DD15 14.8L engine, 505hp, equipped with Allison 4000 RDS automatic transmission, a/c, double frame, 20ft. aluminum dump body, bedliner, sliding tarp, 297in. wheelbase, Hendrickson suspension, 20,000lb front axle, 46,000lb rears, aluminum wheels, 425/65R22.5 front tires, 11R24.5 rear tires, 4-steerable air lift axles with 215/75R17.5 tires, 6-rear axles, 302,983 miles. Remaining Warranty: EW4 6/7/26.



2021 FREIGHTLINER 114SD VN:MR0663 powered by Detroit DD13 diesel engine, 525hp, equipped with Allison automatic transmission, a/c, OX steel Super dump body, sliding tarp, Hendrickson suspension, 20,000lb front axle, 46,000lb rears, aluminum wheels, 425/65R22.5 front tires, 11R24.5 rear tires, 3-steerable air lift axles with 215/75R17.5 tires, 1-steerable hydraulic lift rear axle, 6-rear axles, 182,433 miles. Remaining Warranties: EW4 3/27/26, Allison Transmission 3/27/24.



2023 WESTERN STAR 4900 SIMPLE 18 VN:NN6076 powered by Cummins X12 diesel engine, 500hp, equipped with Allison automatic transmission, a/c, 20ft. Heritage aluminum dump body, bedliner, sliding tarp, Hendrickson suspension, 20,000lb front axle, 46,000lb rears, aluminum wheels, 425/65R22.5 front tires, 11R24.5 rear tires, 4-steerable air lift axles with 215/75R17.5 tires, 6-rear axles, 44,753 miles. Remaining Warranties: Cummins X12 9/2/24, Allison Transmission 9/2/24.



2020 FREIGHTLINER 122SD SIMPLE 18 VN:LL4036 powered by Detroit DD15 14.8L engine, 505hp, equipped with Allison 4000 RDS automatic transmission, a/c, double frame, 20ft aluminum dump body, bed liner, sliding tarp, 297in wheelbase, Hendrickson suspension, 20,000lb front axle, 46,000lb rears, aluminum wheels, 425/65R22.5 front tires, 11R24.5 rear tires, 4-steerable air lift axles with 215/75R17.5 tires, 6-rear axles, 299,143 miles. Remaining Warranty: EW4 8/19/26.



2019 FREIGHTLINER 108SD VN:N/A powered by Cummins ISX diesel engine, equipped with Allison automatic transmission, a/c, power steering, Ox steel dump body, roll tarp, Freightliner Tuftrac suspension, 11R22.5 tires, 2-air lift steerable axles, quad axle, 128,821 miles.

2023 WESTERN STAR 47X SIMPLE 18 VN:UC3452 powered by Detroit diesel engine, 505hp, equipped with Allison automatic transmission, a/c, 20ft. Heritage aluminum dump body, bedliner, sliding tarp, TufTrac suspension, 20,000lb front axle, 46,000lb rears, aluminum wheels, 425/65R22.5 front tires, 11R24.5 rear tires, 4-steerable air lift axles with 215/75R17.5 tires, 6-rear axles, 49,926 miles. Remaining Warranties: EW4 8/31/27, Allison Transmission 8/31/25.





2023 WESTERN STAR 47X SIMPLE 18 VN:UC3453 powered by Detroit diesel engine, 505hp, equipped with Allison automatic transmission, a/c, 20ft. Heritage aluminum dump body, bedliner, sliding tarp, TufTrac suspension, 20,000lb front axle, 46,000lb rears, aluminum wheels, 425/65R22.5 front tires, 11R24.5 rear tires, 4-steerable air lift axles with 215/75R17.5 tires, 6-rear axles, 52,846 miles. Remaining Warranties: Cummins X12 8/31/24, Allison Transmission 8/31/24.



2023 WESTERN STAR 47X SIMPLE 18 VN:UC3451 powered by Detroit diesel engine, 505hp, equipped with Allison automatic transmission, a/c, 20ft. Heritage aluminum dump body, bedliner, sliding tarp, TufTrac suspension, 20,000lb front axle, 46,000lb rears, aluminum wheels, 425/65R22.5 front tires, 11R24.5 rear tires, 4-steerable air lift axles with 215/75R17.5 tires, 6-rear axles, 60,858 miles. Remaining Warranties: Cummins X12 8/31/24, Allison Transmission 8/31/24.



2022 WESTERN STAR 4900 SIMPLE 18 VN:NM0008 powered by Cummins X12 diesel engine, 500hp, equipped with Allison automatic transmission, a/c, 20ft. Heritage aluminum dump body, bedliner, sliding tarp, Hendrickson suspension, 20,000lb front axle, 46,000lb rears, aluminum wheels, 425/65R22.5 front tires, 11R24.5 rear tires, 4-steerable air lift axles with 215/75R17.5 tires, 6-rear axles, 57,182 miles.



2020 WESTERN STAR 4700 VN:LX4726 powered by Cummins X12 diesel engine, 500hp, equipped with Allison automatic transmission, a/c, OX steel Super dump body, sliding tarp, Hendrickson suspension, 20,000lb front axle, 46,000lb rears, aluminum wheels, 425/65R22.5 front tires, 11R24.5 rear tires, 3-steerable air lift axles with 215/75R17.5 tires, 1-steerable hydraulic lift rear axle, 6-rear axles, 112,111 miles. Remaining Warranty: Allison Transmission 12/17/24.



2021 KENWORTH T880 SIMPLE 18 VN:443515 powered by Paccar diesel engine, equipped with Eaton Ultrashift automatic transmission, a/c, 22ft. steel BeauRoc dump body, high lift gate, roll tarp, Chalmers suspension, 18,000lb front axle, 46,000lb rears, aluminum wheels, 425/65R22.5 front tires, 11R22.5 rear tires, 4-steerable air lift axles with 215/75R17.5 tires, 6-rear axles, 154,793 miles. Remaining Warranties: Paccar MX AT/ MX engine Premium Coverage 60 months/ 400,000 miles.



2020 KENWORTH T880 SIMPLE 18 VN:419309 powered by Paccar MX13 diesel engine, 510hp, equipped with Allison 4500 RDS automatic transmission, a/c, double frame, 20ft. Heritage aluminum dump body, bedliner, roll tarp, Hendrickson suspension, 20,000lb front axle, 46,000lb rears, aluminum wheels, 425/65R22.5 front tires, 11R24.5 rear tires, 4-steerable air lift axles with 215/75R17.5 tires, 6-rear axles, 286,873 miles. Remaining Warranties: Paccar MX AP! 60 month/300,000 miles, Paccar MX Premium Coverage 60 month/500,000 miles. Paccar major components 84 months/ 700,000 miles.



2021 PETERBILT 567 VN:741507 powered by Paccar diesel engine, equipped with Eaton Fuller automatic transmission, a/c, power steering, Ox steel dump body, roll tarp system, air ride suspension, 11R22.5 tires, aluminum wheels, 3-steerable air lift axles, 5-axles, 187,817 miles.



2021 PETERBILT 567 VN:741500 powered by Paccar diesel engine, equipped with Eaton Fuller automatic transmission, a/c, power steering, Ox steel dump body, roll tarp system, air ride suspension, 11R22.5 tires, aluminum wheels, 3-steerable air lift axles, 5-axles, 195,857 miles.



2021 PETERBILT 567 VN:741498 powered by Paccar diesel engine, equipped with Eaton Fuller automatic transmission, a/c, power steering, Ox steel dump body, roll tarp system, air ride suspension, 11R22.5 tires, aluminum wheels, 3-steerable air lift axles, 5-axles, 165,553 miles.
2021 PETERBILT 567 VN:741499 powered by Paccar diesel engine, equipped with Eaton Fuller automatic transmission, a/c, power steering, Ox steel dump body, roll tarp system, air ride suspension, 11R22.5 tires, aluminum wheels, 3-steerable air lift axles, 5-axles, 194,971 miles.

3 TRUCK TRACTORS

2018 KENWORTH T880 VN:205520 powered by Cummins ISX diesel engine, equipped with 10 speed transmission, a/c, power steering, wet kit, air ride suspension, 11R22.5 tires, aluminum wheels, tandem axle, 244,968 miles.



2018 KENWORTH T880 VN:211812 powered by Cummins ISX diesel engine, equipped with 10 speed transmission, a/c, power steering, wet kit, air ride suspension, 11R22.5 tires, aluminum wheels, tandem axle, 155,357 miles.



2016 PETERBILT 367 VN:328387 powered by Cummins diesel engine, equipped with 18 speed transmission, power steering, 20,000lb fronts, 20,000lb pusher, 46,000lb rears, triaxle.

5 CONCRETE MIXER TRUCKS

2019 KENWORTH T880 VN:1NKZLK0X1HJ171836 powered by Cummins ISX12 diesel engine, 350hp, equipped with 4500 RDS automatic transmission, power steering, Con-tech 11 yard mixer body, 236in. Wheelbase, tandem axle, 82,212 miles.

2019 KENWORTH T880 VN:1NKZL70X1KJ367229 powered by Cummins ISX12 diesel engine, 350hp, equipped with 4500 RDS automatic transmission, power steering, Con-tech 11 yard mixer body, 236in. Wheelbase, tandem axle, 89,686 miles.

2019 KENWORTH T880 VN:1NKZL70X4KJ367225 powered by Cummins ISX12 diesel engine, 350hp, equipped with 4500 RDS automatic transmission, power steering, Con-tech 11 yard mixer body, 236in. Wheelbase, tandem axle, 88,118 miles.

2019 KENWORTH T880 VN:1NKZL70X9HJ155543 powered by Cummins ISX12 diesel engine, 350hp, equipped with 4500 RDS automatic transmission, power steering, Con-tech 11 yard mixer body, 236in. Wheelbase, tandem axle, 97,549 miles.

2019 KENWORTH T880 VN:1NKZL70XXXJ367231 powered by Cummins ISX12 diesel engine, 350hp, equipped with 4500 RDS automatic transmission, power steering, Con-tech 11 yard mixer body, 236in. Wheelbase, tandem axle, 77,601 miles.

4 DUMP TRAILERS

2007 CTS HRD32 VN:5000443 equipped with 32ft. Steel dump body, high-lift tailgate, roll tarp, 68,000lb GVWR, 11R22.5 tires, tandem axle.

2007 CTS HRD32 VN:S000219 equipped with 32ft. Steel dump body, high-lift tailgate, roll tarp, 68,000lb GVWR, 11R22.5 tires, tandem axle.

2006 CTS HRD32 VN:S000608 equipped with 32ft. Steel dump body, high-lift tailgate, roll tarp, 68,000lb GVWR, 11R22.5 tires, tandem axle.



2002 CPS TSTD 32 VN:P003935 equipped with 32ft. Steel dump body, high-lift tailgate, roll tarp, 80,000lb GVWR, 11R22.5 tires, tandem axle.

6 HYDRAULIC EXCAVATORS



(2) 2019 JOHN DEERE 35G powered by Yanmar diesel engine, equipped with OROPS, front blade, auxiliary hydraulics, rubber tracks, digging bucket.

(2) 2019 JOHN DEERE 26G powered by Yanmar diesel engine, equipped with OROPS, front blade, auxiliary hydraulics, rubber tracks, digging bucket.



(2) 2019 JOHN DEERE 17G powered by Yanmar diesel engine, equipped with OROPS, front blade, auxiliary hydraulics, rubber tracks, digging bucket.

7 RUBBER TRACKED SKID STEERS



(2) 2019 BOBCAT T650 powered by diesel engine, equipped with rollcage, auxiliary mechanical quick coupler, rubber tracks, GP bucket.

(2) 2019 BOBCAT T590 powered by diesel engine, equipped with rollcage, auxiliary mechanical quick coupler, rubber tracks, GP bucket.

(3) 2019 BOBCAT T450 powered by diesel engine, equipped with rollcage, auxiliary mechanical quick coupler, rubber tracks, GP bucket.

16 SKID STEER ATTACHMENTS

(2) NEW GREATBEAR AUGER W/ 3-BITS

NEW GREATBEAR 72IN. ROTARY BROOM

NEW GREATBEAR 72IN. BRUSH CUTTER

(2) NEW GREATBEAR BUCKET MIXER

(2) NEW GREATBEAR ROTARY CULTIVATOR

(2) NEW GREATBEAR TRENCHER

NEW GREATBEAR ROCK SCREENING MACHINE

(2) NEW GREATBEAR 86IN. HYDRAULIC SNOW PLOW

NEW GREATBEAR 72IN. HYDRAULIC VIBRATORY ROLLER

NEW GREATBEAR 72IN. HYDRAULIC ROCK BUCKET

NEW (2) EXTENSION FORK

MULTI-USE CONTAINER

NEW 40FT. HIGH CUBE CONTAINER Details: Four Side Open Door, one end door, lock box, side forklift pockets.

6 PRESSURE WASHERS

(4) NEW EASY KLEEN MAGNUM GOLD powered by gas engine, equipped with 4000PSI, 12Volt, 15hp, Hot Water, totally self contained.

(2) NEW GREATBEAR 4000PSI HOT WATER w/tank.

CONTAINERS

NEW 9FT. With 1 Door & 1 Window.

NEW 8FT. With 1 Door & 1 Window.

10 STORAGE BUILDINGS

(2) NEW GOLDEN MOUNT 40FT. X 80FT. X 20FT.

Snow Rating Test Report; SGS fabric Certificate, Peak roof frame, snow rating: 180kg.

(2) NEW GOLDEN MOUNT 30FT. X 65FT. X 15FT.

Snow Rating Test Report; SGS fabric Certificate, Dome roof frame, snow rating: 180kg.

(2) NEW GOLDEN MOUNT 20FT. X 30FT. X 12FT.

Snow Rating Test Report; SGS fabric Certificate, Dome roof frame, snow rating: 200kg.

(2) NEW GOLDEN MOUNT 20FT. X 20FT. Snow Rating

Test Report; SGS fabric Certificate, PE fabric galvanized tube, UV-resistance & fire-retardant.

(2) NEW GOLDEN MOUNT 20FT. X 40FT. Snow Rating

Test Report; SGS fabric Certificate, PE fabric galvanized tube, UV-resistance & fire-retardant.

4 PORTABLE BATHROOM STATIONS

(2) NEW BASTONE 110V PORTABLE TOILETS W/ SHOWER

(2) NEW BASTONE 110V PORTABLE TOILET W/ DOUBLE STALL

4 SCRAP RECYCLING EQUIPMENT

(4) NEW GREATBEAR 1 YARD SELF DUMPING HOPPER

4 PRESSURE WASHERS

(4) NEW EASY KLEEN MAGNUM GOLD powered by gas engine, equipped with 4000PSI, 12Volt, 15hp, Hot Water, totally self contained.

37 NEW SUPPORT EQUIPMENT

(10) NEW GREATBEAR 20FT. BI-PARTING WROUGHT IRON GATE With artwork "Deer" in the Middle of Gate Frame.

(2) NEW GREATBEAR 14FT. BI-PARTING WROUGHT IRON GATE With artwork "Deer" in the Middle of Gate Frame.

NEW STEELMAN 10FT. WORKBENCH W/ 40-DRAWERS

NEW STEELMAN 10FT. WORKBENCH W/ 25-DRAWERS

NEW STEELMAN 10FT. WORKBENCH W/ 15-DRAWERS & 2 CABINETS

(4) NEW STEELMAN 7FT. WORKBENCH W/ 20-DRAWERS

NEW STEELMAN 7FT. WORKBENCH W/ 18-DRAWERS

(4) NEW STEELMAN 7FT. WORKBENCH W/ 10-DRAWERS & 2 CABINETS

(10) NEW (25) SAFETY HIGHWAY CONES

NEW GREATBEAR (22) 2T-5T WEBBING SLING

NEW GREATBEAR (5) 5400LBS RATCHET BINDER & (10) 20FT. 5/16" CHAIN

NEW GREATBEAR (5) 9200LBS RATCHET BINDER & (10) 20FT. 3/8" CHAIN

****TIMED AUCTION****

Please feel free to preview any of our Live or Timed Auction sale sites 5 days before auction day!

BUSHNELL, FLORIDA

OPENS: FRIDAY, SEPTEMBER 15TH AT 9:30 AM - CLOSES: FRIDAY, SEPTEMBER 29TH AT 9:30 AM

ADDRESS: 716 CR 475, Bushnell, Florida 33513. **NOTE:** Due to the recent acquisition of Ahern Rentals, United Rentals must move excess rental inventory to make room for new arrivals!. **SALE SITE PHONE:** (407) 239-2700. **FLORIDA LICENSE:** AB-1091. **FLORIDA AUCTIONEER:** AU-1548 Jack Lyon. **TERMS & CONDITIONS:** **UPDATE:** Cash payment will only be accepted on sale day. After sale day, all items must be paid for by Certified Check, Wire Transfer, or Credit Card. "Certified Check" made payable to Alex Lyon Et Son. Everything Sells "AS IS, WHERE IS." *The following charges will apply on all purchases:* (1.) For each unit \$45,001.00 and above, a 5.99% administration fee will be assessed when paying with Cash, Certified Check, or Wire Transfer. (The standard fee of 8.99% will be assessed when paying with credit card); (2.) For each unit \$1,001- \$45,000, a 10% administration fee will be assessed when paying with Cash, Certified Check, or Wire Transfer. (The standard fee of 13% will be assessed when paying with credit card); (3.) For each unit \$0- \$1,000, a 12.5% administration fee will be assessed when with Cash, Certified Check, or Wire Transfer. (The standard fee of 15.5% will be assessed when paying with credit card). ****Please NOTE: An additional fee may be assessed when bidding online**** The Bidder is responsible for knowing which item he/she is bidding on. If he/she is unsure, he/she should inquire or not bid. When you become the winning bidder at auction you have effected a contract and will be expected to pay for items in which you were evidenced to be the successful bidder. Auctioneer will not honor "mistakes".



FOR BID ONLINE TECHNICAL ASSISTANCE CALL
Proxibid: (855) 636-6461
Nextlot: (919) 361-1111

TELESCOPIC FORKLIFT



XTREME XRM842 SN:XRM0842110690145 4x4, powered by diesel engine, equipped with OROPS, 8,000lb lift capacity, 42ft. Reach height, 852 hours.

8 BOOM LIFTS



2016 JLG 460SJ SN:0300217245 4x4, powered by diesel engine, equipped with 46ft. Platform height, articulating boom, JIB, 500lb lift capacity.



2015 SNORKEL TB86J SN:TB86J-04-000004 4x4, powered by diesel engine, equipped with 86ft. Platform height, straight boom, JIB, 500lb lift capacity.



SNORKEL TB85JFA SN:S0808080018RBLT 4x4, powered by diesel engine, equipped with 85ft. Platform height, straight boom, JIB, 500lb lift capacity.



2014 SNORKEL TB60 SN:TB60-04-000034 4x4, powered by diesel engine, equipped with 60ft. Platform height, straight boom, 500lb lift capacity.

SNORKEL TB60 SN:MY06048RBLT 4x4, powered by diesel engine, equipped with 60ft. Platform height, straight boom, 500lb lift capacity.

SNORKEL TB60 SN:NV05038 4x4, powered by diesel engine, equipped with 60ft. Platform height, straight boom, 500lb lift capacity.

2017 SNORKEL A46JRT SN:A46JRT-04-170200589 4x4, powered by diesel engine, equipped with 46ft. Platform height, articulating boom, JIB, 500lb lift capacity, 930 hours.



2016 SNORKEL A46JRT SN:A46JRT-04-000368 4x4, powered by diesel engine, equipped with 46ft. Platform height, articulating boom, JIB, 500lb lift capacity, 372 hours.

7 ELECTRIC BOOM LIFTS

2014 SNORKEL A46JE SN:A46JE-04-000060 electric powered, equipped with 46ft. Platform height, articulating boom, JIB, 500lb lift capacity, 246 hours.



2014 SNORKEL A46JE SN:A46JE-04-000073 electric powered, equipped with 46ft. Platform height, articulating boom, JIB, 500lb lift capacity, 286 hours.

2016 SNORKEL A38E SN:A38E-01-007106 electric powered, equipped with 38ft. Platform height, articulating boom, JIB, 500lb lift capacity. Does Not Run.



2015 SNORKEL A38E SN:A38E-01-006456 electric powered, equipped with 38ft. Platform height, articulating boom, 500lb lift capacity.



2019 SNORKEL TL39 SN:TL39-07-190300029 electric powered, equipped with 39ft. Platform height, articulating boom, trailer mounted, 500lb lift capacity, 234 hours.

2014 SNORKEL MB26J SN:MB26J-01-001304 electric powered, equipped 26ft. Platform height, JIB, 500lb lift capacity.



2014 SNORKEL MB20J SN:MB20J-01-001293 electric powered, equipped 20ft. Platform height, JIB, 500lb lift capacity.

76 SCISSOR LIFTS



2017 GENIE GS-4069 SN:GS69F-13386 electric powered, equipped with 40ft. Platform height, slide out deck, 500lb lift capacity.



2015 GENIE GR-20 SN:GR15-37119 electric powered, equipped with 20ft. Platform height, slide out deck, 500lb lift capacity, 395 hours.



2015 SNORKEL S2770RT SN:S2770RT-07-000144 4x4, electric powered, equipped with 27ft. Platform height slide out deck, rough terrain tires.



2017 SNORKEL S4732E SN:S4732E-04-170200989 electric powered, equipped with 32ft. Platform height, slide out deck, 500lb lift capacity, 125 hours.

(20) 2016 SNORKEL S4732E electric powered, equipped with 32ft. Platform height, slide out deck, 500lb lift capacity.

(4) 2015 SNORKEL S4732E electric powered, equipped with 32ft. Platform height, slide out deck, 500lb lift capacity.



(6) 2017 SNORKEL S4726E electric powered, equipped with 26ft. Platform height, slide out deck, 500lb lift capacity.

(8) 2016 SNORKEL S4726E electric powered, equipped with 26ft. Platform height, slide out deck, 500lb lift capacity.



(4) 2019 SNORKEL S3226E electric powered, equipped with 26ft. Platform height, slide out deck, 500lb lift capacity.

(3) 2017 SNORKEL S3226E electric powered, equipped with 26ft. Platform height, slide out deck, 500lb lift capacity.



(2) 2019 SNORKEL S3219E electric powered, equipped with 19ft. Platform height, slide out deck, 500lb lift capacity.

(6) 2017 SNORKEL S3219E electric powered, equipped with 19ft. Platform height, slide out deck, 500lb lift capacity.

(7) 2016 SNORKEL S3219E electric powered, equipped with 19ft. Platform height, slide out deck, 500lb lift capacity.

(4) 2015 SNORKEL S3219E electric powered, equipped with 19ft. Platform height, slide out deck, 500lb lift capacity.



2017 SNORKEL S3215E SN:S3215E-04-000002 electric powered, equipped with 15ft. Platform height, slide out deck, 500lb lift capacity, 155 hours.



2015 SNORKEL S3010E SN:S3010E-01-000023 electric powered, equipped with 10ft. Platform height, slide out deck, 500lb lift capacity, 122 hours.



2017 SNORKEL UL32DC SN:UL32DC-01-170200066 electric powered, equipped 32ft. Platform height.



2014 JLG 1230ES SN:0200237064 electric powered, equipped with 12ft. Platform height, slide out deck, 500lb lift capacity.

2016 JLG 20MVL SN:0130024604 electric powered, equipped with 20ft. Platform height, slide out deck, 500lb lift capacity, 397 hours.

2015 JLG 20MVL SN:0130022405 electric powered, equipped with 20ft. Platform height, slide out deck, 500lb lift capacity, 529 hours.



2013 JLG 20MVL SN:0130019844 electric powered, equipped with 20ft. Platform height, slide out deck, 500lb lift capacity.



2014 SKYJACK SJIII3219 SN:22067462 electric powered, equipped with 19ft. Platform height, slide out deck, 500lb lift capacity, 163 hours.

ROUGH TERRAIN CRANES



P & H S35 SN:35224 powered by Deutz BF6L-913 diesel engine, equipped with powershift transmission, 80ft. Reach height, (4) sheave hook & block, (4) outriggers, 16 x 24 rubber.



P&H OMEGA 18 SN:46600 4x4, powered by diesel engine, equipped with Cab, 18 ton lift capacity, 62ft. Reach height, 22ft. Jib, dual winch, 14.00-24 rubber.

9 HYDRAULIC EXCAVATORS



2016 CAT 312FGC SN:FKE10032 powered by Cat diesel engine, equipped with Cab, air, heat, digging bucket, 2,722 hours.



CAT 375L SN:1JM00096 powered by Cat diesel engine, equipped with Cab, air, heat, 12ft. Stick, 34in. Pads, counterweight removal, 72in. Digging bucket.



CAT 350LC SN:3ML00345 powered by Cat diesel engine, equipped with Cab, air, 55in. Digging bucket, long undercarriage.



2016 CAT 336FL SN:RKB01886 powered by Cat diesel engine, equipped with Cab, air, heat, hydraulic quick coupler, digging bucket, long undercarriage.



2016 CAT 336FL SN:RKB10687 powered by Cat diesel engine, equipped with Cab, air, heat, hydraulic quick coupler, digging bucket, long undercarriage.



2014 CAT 336EL SN:JRJ00399 powered by Cat diesel engine, equipped with Cab, air, heat, hydraulic quick coupler, digging bucket, long undercarriage.



KOMATSU PC200-6 SN:80864 powered by Komatsu diesel engine, equipped with Cab, long stick, 42in. Digging bucket w/ manual thumb. Not used since approximately \$15,000 spent rebuilt boom cylinders, new sprockets, fuel injection work.

(2) NEW CHERRY KV12 powered by Briggs & Stratton gas engine, equipped with OROPS, front blade, auxiliary hydraulics, rubber tracks, digging bucket, clean up bucket, mechanical quick coupler, mechanical thumb, mechanical grapple.

HYDRAULIC HAMMERS



NEW TROJAN 45mm pins fits to: Cat 305, 305.5 Komatsu PC45/50/55, Hyundai R55, Hitachi/Deere 50D/G, Case, New Holland, Kobelco SK50, Bobcat E50/341/337.

NEW TROJAN 40mm pin fits to: Cat 303, 303.5, 304, Case, New Holland, Kobelco SK35, Deere/Hitachi 35D/G.

GRAPPLE



NEW BODINE HEAVY DUTY DEMOLITION 100mm pins, fits 86-125,000lb machines.

RUBBER TIRED LOADER



JCB 409 SN:757172 powered by diesel engine, equipped with OROPS, GP bucket w/ grapple.

CRAWLER TRACTOR



CAT D6MLGP SN:4JN01456 powered by Cat diesel engine, equipped with OROPS, 6 way blade, wide pads..

TRACTOR LOADER BACKHOE



2018 CASE 580N EP 4x4, powered by diesel engine, equipped with OROPS, GP front bucket, rear digging bucket, 412 hours.

4 RUBBER TRACKED SKID STEERS



2018 CASE TR270 SN:448410 powered by diesel engine, equipped with rollage, auxiliary hydraulics, mechanical quick coupler, rubber tracks, GP bucket, 2,124 hours.



2018 CASE TR270 SN:442201 powered by diesel engine, equipped with rollage, auxiliary hydraulics, mechanical quick coupler, rubber tracks.



2016 CASE TR270 SN:424676 powered by diesel engine, equipped with rollage, auxiliary hydraulics, mechanical quick coupler, rubber tracks, GP bucket, 934 hours.



2016 CASE TR270 SN:424642 powered by diesel engine, equipped with rollage, auxiliary hydraulics, mechanical quick coupler, rubber tracks, GP bucket, 2,113 hours.

20 SKID STEER ATTACHMENTS

NEW TROJAN HYDRAULIC HAMMER



NEW TROJAN FORKS
(3) NEW GREATBEAR AUGER W/ 3-BITS



NEW GREATBEAR ROTARY CULTIVATOR
(2) NEW GREATBEAR TRENCHER



(6) NEW GREATBEAR 78IN. FORK GRAPPLE
(3) NEW (2) EXTENSION FORK
SKID STEER PLATE
(2) NEW MOWER KING ECSSTRO72 72IN. ROTARY
TILLER

FORKLIFT ATTACHMENTS

(2) NEW FORKLIFT JIB

GENERATORS



2018 ALLMAND MP25 powered by diesel engine, equipped with 25KW, trailer mounted.



2017 MAGNUM PRO MMG25IT4 SN:3001636670 powered by diesel engine, equipped with 25KW, trailer mounted.

5 LIGHT PLANTS



2021 GENERAC MLT6SM SN:3008435973 powered by diesel engine, equipped with 4-1,000 watt lightbulbs, 6KW, trailer mounted, 1,365 hours.



2019 MAGNUM PRO MLT6SM SN:7F5BL1010KB214295 powered by diesel engine, equipped with 4-1,000 watt lightbulbs, 6KW, trailer mounted, 1,511 hours.

2019 MAGNUM PRO MLT6SM SN:3004901510 powered by diesel engine, equipped with 4-1,000 watt lightbulbs, 6KW, trailer mounted.



2017 MAGNUM PRO MLT6SK SN:3002192672 powered by diesel engine, equipped with 4-1,000 watt lightbulbs, 6KW, trailer mounted.



2017 TEREX RL4V2 SN:RL4J-6030 powered by diesel engine, equipped with 4-1,000 watt lightbulbs, 6KW, trailer mounted, 2,597 hours.

15 WATER PUMPS



2011 PIONEER SAPP14S17L71609 SN:16083 powered by diesel engine, equipped with 18in. Diameter, trailer mounted.

2011 PIONEER SAPP14S17L71609 SN:16084 powered by diesel engine, equipped with 18in. Diameter, trailer mounted.

PIONEER PP88S12L71D914 SN:9894 powered by diesel engine, equipped with 8in. Diameter, trailer mounted, 2,801 hours.



2012 PIONEER PP63C17L71D914 SN:17223 powered by diesel engine, equipped with 6in. Diameter, trailer mounted, 1,791 hours.

2011 PIONEER PP63C17L71D914 SN:14984 powered by diesel engine, equipped with 6in. Diameter, trailer mounted.

2011 PIONEER PP66S12L714024 SN:16145 powered by diesel engine, equipped with 6in. Diameter, trailer mounted.

2011 PIONEER PP66S12L71D914 SN:13998 powered by diesel engine, equipped with 6in. Diameter, trailer mounted.



2013 PIONEER PP66S12L71D914 SN:PP21576 powered by diesel engine, equipped with 6in. Diameter, trailer mounted.



2012 BAKERCORP BP1818LSCD375AS SN:179291 powered by diesel engine, equipped with 18in. Diameter, trailer mounted.

2013 BAKERCORP BP84HS-CD1540T SN:1R9AA1213DG296120 powered by diesel engine, equipped with 5in. Diameter, trailer mounted.



THOMPSON 12JSCJDJS68TM SN:12JSCJ-144 powered by diesel engine, equipped with 12in. Diameter, trailer mounted.

THOMPSON 8VW-DJDS-45D SN:8VW-033 powered by diesel engine, equipped with 8in. Diameter, trailer mounted.



2010 CORNELL 12NHWRRP6068SA SN:219626 powered by diesel engine, equipped with 12in. Diameter, trailer mounted.

2013 MYERS V186-10 8IN. ROTARY WELLPOINT SN:MSPJN2192 powered by diesel engine.



2013 BBA PT250 8IN. ROTARY WELLPOINT SN:13-2335 powered by diesel engine.

HYDRAULIC POWER UNITS



THOMPSON 32HPUDDST3913 SN:32HPU-177



2013 HYDRA-TECH HT66-4024 SN:S4405

TROMMEL SCREENING PLANT



SCREEN USA 615 SN:4770604 powered by John Deere diesel engine, equipped with hydraulic driven belts, feed hopper, shaker box, single axle.

SWEeper



2017 BROCE BW-260 SN:201328 powered by diesel engine, equipped with OROPS, 8ft. Broom, water system, 214 hours.

3 DETACHABLE GOOSENECK TRAILERS

(3) NEW UNUSED WITZCO RG52 104,000# load capacity, 3 axles with 48' overall length. Removable gooseneck, 8'6" wide, level deck style. Ground bearing, 2 angle scraper gooseneck with self-contained hydraulic system. 22' load deck, tapered front beam, 2" lumber decking & (24) 12" outriggers (12 each side). 3 "D" rings per side of deck & 2 on front stumps at tire area. Hutch 9700 spring suspension, 25,000# capacity axles, 16.5" x 7"0 air brakes, uni-mount wheels with 255/70 R22.5 Radial tires. Modular wire harness, rubber mounted sealed lights, DOT approved. FET APPLIES.

5 UTILITY VEHICLES

2017 CLUB CAR CARRYALL 1700 SN:SD1722-813983 4x4, powered by diesel engine, equipped with OROPS, 4-seater, utility body, 1,878 hours.

2017 CLUB CAR CARRYALL 1700 SN:SC1730/818862 4x4, powered by gas engine, equipped with OROPS, 4-seater, utility body, 2,415 hours.



2017 CLUB CAR CARRYALL 1500 SN:819842 4x4, powered by diesel engine, equipped with OROPS, utility body, 2,018 hours.



2020 KUBOTA RTV-X1140W-H SN:A5KD2GDBHLG039087 4x4, powered by diesel engine, equipped with OROPS, 4-seater, utility body, 1,400 hours.



2016 KUBOTA RTV-X900W-H SN:27837 4x4, powered by diesel engine, equipped with EROPS, 2-seater, utility body, 2,105 hours.

FLATBED BODY



NEW DURAMAG 8FT. ALUMINUM Universal fit, headache rack and rear apron with LED lights.

3 MULTI-USE CONTAINERS



(3) NEW 40FT. HIGH CUBE CONTAINER Details: Four Side Open Door, one end door, lock box, side forklift pockets.

5 CONTAINERS

(2) NEW 9FT. With 1 Door & 1 Window.
(2) NEW 8FT. With 1 Door & 1 Window.
NEW 7FT. With 1 Door & 1 Window.

6 PORTABLE BATHROOM STATIONS



(3) NEW BASTONE 110V PORTABLE TOILET W/ DOUBLE STALL



(3) NEW BASTONE 110V PORTABLE TOILETS W/ SHOWER

12 STORAGE BUILDINGS

(3) NEW GOLDEN MOUNT 40FT. X 40FT. Snow Rating Test Report;SGS fabric Certificate, PE fabric galvanized tube, UV-resistance & fire-retardant.



(2) NEW GOLDEN MOUNT 30FT. X 40FT. X 15FT. Snow Rating Test Report;SGS fabric Certificate, Dome roof frame, snow rating:180kg.

(3) NEW GOLDEN MOUNT 20FT. X 40FT. Snow Rating Test Report;SGS fabric Certificate, PE fabric galvanized tube, UV-resistance & fire-retardant.

(3) NEW GOLDEN MOUNT 20FT. X 30FT. X 12FT. Snow Rating Test Report;SGS fabric Certificate, Dome roof frame, snow rating: 200kg.

NEW GOLDEN MOUNT 20FT. X 20FT. Snow Rating Test Report;SGS fabric Certificate, PE fabric galvanized tube, UV-resistance & fire-retardant.

13 SCRAP RECYCLING EQUIPMENT



(13) NEW GREATBEAR 1 YARD SELF DUMPING HOPPER

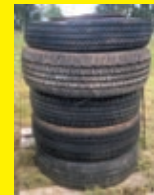
FUEL TANKS

2012 TRANSCUBE 500 GALLON DOUBLE WALL SN:D812099



THOMPSON 150 GALLON SN:FT-466

15 TIRES, NEW & USED



(4) TIRES
(7) TIRES
(4) TIRES W/ RIMS

PARTY RENTAL SUPPLIES

20FT. X 40FT. PARTY TENT
PARTY TENT

19 PRESSURE WASHERS

(4) NEW EASY KLEEN MAGNUM GOLD powered by gas engine, equipped with 4000PSI, 12Volt, 15hp, Hot Water, totally self contained.

NEW GREATBEAR 4000PSI HOT WATER w/tank.



(14) NEW REALM 2600PSI ELECTRIC

71 NEW SUPPORT EQUIPMENT



(6) NEW TOGO 8000 WATT GENERATOR powered by gas engine, equipped with 8000 watts, electric start, backup for home use, RV ready, hurricane supply & carb compliant.



(16) NEW GREATBEAR 20FT. BI-PARTING WROUGHT IRON GATE With artwork "Deer" in the Middle of Gate Frame.
 (14) NEW GREATBEAR 14FT. BI-PARTING WROUGHT IRON GATE With artwork "Deer" in the Middle of Gate Frame.
 (3) NEW STEELMAN 10FT. WORKBENCH W/ 25-DRAWERS
 (4) NEW STEELMAN 10FT. WORKBENCH W/ 15-DRAWERS & 2 CABINETS



(6) NEW GREATBEAR (5) 9200LBS RATCHET BINDER & (10) 20FT. 3/8" CHAIN
 (6) NEW GREATBEAR (5) 5400LBS RATCHET BINDER & (10) 20FT. 5/16" CHAIN



NEW GREATBEAR 16PC 2IN. X 27IN. RATCHET & 8PC 1.5IN. X 27IN. RATCHET
 NEW GREATBEAR (16PC) 2IN. X 27IN. RATCHET & (8PC) 1.5IN. X 27IN. RATCHET
 NEW GREATBEAR (38) 4.75T-12T RIGGING HARDWARE
 NEW GREATBEAR ELECTRIC WINCH



NEW GREATBEAR QTY OF 22PC 2T-5T WEBBING SLING
 NEW 5/16IN. 7FT. G80 DOUBLE LEGS LIFTING CHAIN SLINGS
 (10) NEW (25) SAFETY HIGHWAY CONES

**85 SUPPORT EQUIPMENT
 SEE PICS BELOW**

- 2017 HYSTER W45ZHD PALLET JACK
 SN:A419N05128P electric powered.
- 2011 STRAINRITE FILTER 12IN. 24 BAG CS
 SN:RD-11752
- (2) TAR CUTTER
- (2) 175PSI AIR COMPRESSOR
 SUB PUMP
- AIR HOSE REEL
- DISCHARGE HOSE
- (3) SPROCKETS
- SPROCKET BALANCER
- BIG ROLLER FOR DRYWALL MUD
- HEPA 500
- (4) BREAKER BOXES W/ PLUGS
- (2) MAKITA SAW
- (2) PALLET OF HAND SANITIZER
- PALLET OF MEDIUM BED MORTAR
- (2) PALLET OF FACE MASKS
- 3-PACK OF 10IN. SAW BLADES
- WOKIN TOOL BOX
- (3) MAKITA MITER SAWS
- MECH MARVEL GENERATOR

- (2) TACSA GREASE TANK
- RAKE, PITCH FORK, & SHOVEL
- CART
- PALLET (3) CASES OF LYSOL CLEANER
- (2) PALLET OF TILE
- (3) PALLET OF ATOM ARC & SUREWELD
- (2) FORK EXTENSION
- GROUP (5) BREAKER PANELS
- TRAILER HITCH
- STOP SIGN
- POLE SAW
- (2) PITCH FORKS & SHOVEL
- MAKITA PULSATING SAW
- BLOWER
- (2) MAKITA MITER SAW
- ATV BATTERY
- TACKLIFT CIRCULAR SAW
- POWERTRAIN COMPRESSOR
- (6) 20FT. GATES
- 14FT. GATE
- HUSQVARNA CUTOFF 2000
- MINI TRACK DUMPS

- PACK OF 4 2 CYCLE OIL
- RYOBI CHAINSAW
- GAS CAN
- EDGER
- (2) PLATE COMPACTOR
- BRIGGS & STRATTON PUSH MOWER
- RIDGID VACUUM
- CHAMPION GENERATOR 4000
- BARREL OF BROOMS
- (2) BARREL OF SHOVELS
- DRYWALL PLATFORM
- MAKITA AIR COMPRESSOR
- SAFE
- PALLET OF MISC
- PALLET OF ATOM ARC
- MAKITA BLOWER
- TABLE SAW
- CONCRETE ATTACHMENT
- BOX OF TARPS
- (2) CLEMCO HELMET
- WHEEL CART
- (3) MAKITA RADIO





AUCTION CALENDAR

Go to WWW.LYONAUCTION.COM for **START-STOP** times on our **TIMED & LIVE AUCTIONS**

1. **LIVE:** Wednesday, August 30: **PARSIPPANY, NEW JERSEY:** 1 Owner Major Job Completion of Several Jobs (The Best of the Best). Very Late Model Demolition, Construction Equipment Late Model Trucks, Demolition Trailers and Attachments. **EARLY HIGHLIGHTS:** 2021-(2)2019-(2)2016 Peterbilt 389(t/a, heavy spec), Plus Service, Lube, Rolloff & Water Trucks, Mack Garbage Truck, Several Late Model Pickups and Flatbeds, (2)2018 Krus Demo Trailers, (5)2021 Coras Dump Trailers, Talbert 50-T(tri.) Detachable, Eager Beaver 20-T Tagalong, (2)Emergency Cargo Trailers, 2016 Doosan DX350 High Reach, (2)2019 Volvo Volvo EC350LC, 2020 Volvo ECR58D, 2021-2016 Doosan DX350, 2018 Doosan DX140, (2)2019 JD 310SL(4x4), (2)2018 JD 318D, Boom & Scissor Lifts, Generators, Large Quantity Shears, Grapples, Hammers and Buckets.
2. **TIMED:** Closes- Wednesday, August 30, Opens- Friday, August 18: **TALLAPOOSA, GEORGIA:** Part 2 of Acquisition of Ahern Rentals. Selling Late Model Construction, Utility Equipment, Aerials, Forklifts, Skid Steers, Accessories, Trucks of All Kinds, Trailers and more.
3. **TIMED:** Closes- Monday, September 4, Opens- Monday, August 28: **SASKATCHEWAN, CANADA:** Acquisition Auction. Late Model Construction, Utility Equipment, Boom & Scissor Lifts, Pipe Benders, Large Water Pumps, Air Compressors, Generators, Heaters, Light Towers, Power Units, Welders, Excavators, Forklifts, Plus Support Including Reversible Plate Tampers, Torque Wrenches, Impact Wrenches, Utility Vehicles, Skid Steer Attachments.
4. **LIVE:** Wednesday, September 6: **FT. WORTH, TEXAS:** Part 2 of Acquisition of Ahern Rentals. Selling Late Model John Deere & Cat Construction, Utility Equipment, Aerials, Forklifts, Skid Steers, Accessories, Trucks of All Kinds, Trailers and more.
5. **LIVE:** Thursday, September 7: **HOUSTON, TEXAS:** Part 2 of Acquisition of Ahern Rentals. Selling Late Model Construction, Utility Equipment, Aerials, Forklifts, Skid Steers, Accessories, Trucks of All Kinds, Trailers and more.
6. **LIVE:** Saturday, September 9: **LAS VEGAS, NEVADA:** Very Large, Late Model Construction Equipment, Trucks and Trailers Rental Equipment Auction. Over 700 Scissor Lifts, Large Quantity of Boom Lifts and Forklifts
7. **TIMED:** Closes- Tuesday, September 12, Opens- Saturday, September 2: **HOUSTON, TEXAS:** Bankruptcy Auction. Construction Equipment of all Kinds, Cat, Komatsu and more.
- 8, 9, 10. **LIVE:** Wednesday, September 13, **LIVE:** Thursday, September 14, **TIMED:** Friday, September 15: **ASHTABULA, OHIO:** Late Model Aggregate, Construction & Recycling Equipment, All Types of Trucks: Rolloff, Dump, Service & Pickup, Various Trailers, Very Large Amount of Steel Plates, Support and Accessories.
11. **LIVE:** Wednesday, September 20: **AUSTIN, TEXAS:** One-of-A-Kind Auction. Complete Spread (36)Late Model Freightliner, Western Star 7-Axle Super Dump Trucks, (8)2023 Freightliner 0 to 10,000 miles, Majority 2020-2022 All Very Low Miles in Tip-Top Condition, All Sell with Extended Warranty.
12. **LIVE:** Friday, September 22: **ALBANY, NEW YORK:** Major Job Completion. Primarily Cat, Komatsu, John Deere, Volvo Earthmoving Equipment, (8)Articulated Haul Trucks, Attachments, Dump Trucks, Truck Tractors, All Types of Trailers.
13. **LIVE:** Saturday, September 23: **FREEHOLD, NEW JERSEY:** Consolidation Auction. 1 Owner of All Types of Trucks, Construction Equipment, Support, Accessories and Scrap Containers.
14. **LIVE:** Thursday, September 28: **SARDIS, OHIO:** Very Large Job Completion Auction. Primarily Cat & Komatsu, John Deere Construction Equipment, Aerial Lifts, Forklifts, Late Model Dump Trucks, Truck Tractors, Service Trucks, Pickups, Attachments and Support.
15. **TIMED:** Closes- Friday, September 29, Opens- Friday, September 15: **BUSHNELL, FLORIDA:** Part 2 of Acquisition of Ahern Rentals. Selling Late Model Construction, Utility Equipment, Aerials, Forklifts, Skid Steers, Accessories, Trucks of All Kinds, Trailers and more.
16. **LIVE:** Friday, September 29: **QUERETARO, MEXICO:** Very Late Model Cat, Case, John Deere, Case Construction Equipment, **HIGHLIGHTS:** (2)Cat D8T, (4)Cat 323 & 320D, New Case Backhoes.
17. **LIVE:** Saturday, September 30: **ATLANTIC CITY, NEW JERSEY:** Day 1 of 2-Day Auction. Late Model Rental Fleet Construction, Utility Equipment, Aerial Lifts, Fork Lifts, Trucks & Trailers, Attachments, Support.
18. **TIMED:** Closes- Sunday, October 1, Opens- Thursday, September 21: **ATLANTIC CITY, NEW JERSEY:** Day 2 of 2-Day Auction. Large Quantity of Attachments, Support, Storage Buildings, Portable Bathrooms, Buckets, Support Equipment and more.
19. **LIVE:** Thursday, October 5: **CENTRAL SQUARE (SYRACUSE), NEW YORK:** Beautiful 6.5 Acre with Shop & Office Facility, 3 Separate Parcels with 2 Houses sold by Manasse Auctions. Plus Small Amount of Support Equipment. Fancy Muscle Car: Olds 442.
20. **TIMED:** Closes- Thursday, October 5, Opens- Friday, September 22: **ST. LOUIS MISSOURI:** Estate Auction of Farm Machinery, Ag Tractors, Trucks, Trailers, Special Virtually New Kubota Round Baler 4x5 with Wrap.
21. **LIVE:** Friday, October 6: **ATKINSON, NEW HAMPSHIRE:** Rental Returns of Construction Equipment, Aerial Lifts, Dump Trucks, Truck Tractors, Pickup Trucks, Trailers, Attachments and Support.
22. **LIVE:** Thursday, October 12: **PUTNAM, CONNECTICUT:** Downsizing from one Generation to Another. Very Large Specialized Truck & Trailer & Forklift Auction. **EARLY HIGHLIGHTS:** (6)Peterbilt Truck Tractors(tri.), 2016 Peterbilt Rollback(tri.), Several Pickups, (3)Talbert Detachables, Talbert 60T(transform deck, 4-axle extend.), Trailmaster 40T(high/low, 3rd axle set-up), (3)Traiking 53ft., XL 60ft. Stretch(tri.), Traiking 45T 48ft. Step Deck(tri.), Several Double Drop Decks(stretch), (6)Talbert Dollies, Several High Flats, Forklifts: Towmotor(25,000lb.), Toyota(16,000lb.), Hyster(12,500lb.), Hyster(8,000lb.), Toyota(5,000lb.), Shop Equipment, Welders and much more.
23. **LIVE:** Saturday, October 14: **CAPE COD (PLYMOUTH), MASSACHUSETTS:** Late Model Snow & Construction Equipment, Rubber Tired Loaders, Skid Steers, Midi Excavators, Tractor Loader Backhoes, Big & Small Snow Trucks, Snow Plows, Snow Blades Attachments, Trailers and more.
24. **LIVE:** Wednesday, October 18: **BUSHNELL, FLORIDA:** Large Federal Bankruptcy of a Land Clearing and General Contractor. Very Nice Equipment. Primarily Cat, Late Model Recycling Equipment.
25. **LIVE:** Thursday, October 19: **PITTSBURGH (ACME), PENNSYLVANIA:** Late Model Rental Returns of Primarily Cat, Komatsu, John Deere Construction Equipment, Aerial Lifts, Forklifts, Utility Equipment, Dump Trucks, Service Trucks, Pickup Trucks, (20)Mack Truck Tractors, Trailers.
26. **LIVE DAY 1:** Saturday, October 21: **GROVELAND, MASSACHUSETTS:** PART 1. 43 Years in Business. Construction Equipment, Dump Trucks, Truck Tractors, All Types of Service and Pickup and Stake Trucks, Large Quantity of Support.
27. **TIMED DAY 2:** Closes- Sunday, October 22, Opens- Saturday, October 7: **GROVELAND, MASSACHUSETTS:** PART 2. Very Large Quantity of Support. 43 Years of it. Enormous Amount of all Brands of Manuals and Large Quantity of Different Styles of Aggregate Material, Shop Equipment.
28. **LIVE** Thursday, October 26: **SAN ANTONIO, TEXAS:** One of the Finest Anywhere Rental Fleet and Acquisition of a Major Construction Dealership. Large, Late Model Rental Fleet Construction Equipment to Include Cat, John Deere, Kobelco, Linkbelt, Case, Doosan, Dynapac, Skytrak. Excavators, Articulated Haul Trucks, Crawler Tractors, Rubber Tired Loaders, Backhoes, Telescopic Forklifts, Skid Steers, Aerials, Delivery Trucks, Service Trucks, Truck Tractors, Attachments and more.
29. **LIVE:** Saturday, November 11: **LOCKPORT (NIAGARA FALLS), NEW YORK:** Annual Niagara Frontier Sales Auction. Authorized Ford/New Holland Dealership. Featuring Later Model Agricultural and Construction Equipment, Support, Attachments, Trucks and Trailers.
30. **TIMED:** Closes- Saturday, November 25, Opens- Wednesday, November 15: **BRIDGEPORT, NEW YORK:** Late Model Construction Equipment, Aerials, Utility Equipment, New & Used Support, Attachments, All Types of Truck Tractors, Dump Trucks and Trailers, Cranes.
31. **LIVE:** Friday, December 29: **GREENWICH (ALBANY), NEW YORK:** Late Model Cat, Komatsu, John Deere Construction, Agricultural, Utility Equipment, Aerial Lifts, Forklifts, Skid Steers, All Types of Trucks & Trailers, Attachments & Support.
32. **LIVE:** Saturday, January 27: **COLUMBUS (DELAWARE), OHIO:** Late Model Cat, John Deere, Komatsu Rental Fleet Equipment, Attachments, Support All Types of Trailers & Trucks.
- 33-42. **LIVE:** Saturday, February 3 to Monday, February 12: **BUSHNELL, FLORIDA:** 10 Glorious Days of Selling New & Like New Rental Fleet Equipment. Only the Best to be Found Here. Construction, Utility Equipment, Aerial Lifts, Forklifts, Dump Trucks, Truck Tractors, All Types of Trailers(the best), Enormous Amount of New & Like New Support, Attachments and more.

NEW DATES TO BE ANNOUNCED

43. **TORONTO, CANADA:** Late Model Rentals of Agricultural Equipment, Construction Equipment, Attachments, Tools, Support, Various Trucks and Trailers.
44. **RACINE, WISCONSIN:** Job Completion Auction of Late Model Construction, Aggregate, Utility Equipment, Truck Tractors, Dump Trucks, Service & Pickup Trucks, Trailers, Attachments and Support.
45. **CHICAGO, ILLINOIS:** Construction Equipment, Aerial Lifts, Forklifts, Truck Tractors, Dump Trucks, Pickups, All Types of Trailers (Equipment & Van), Attachments and Support.
46. **ATTLEBORO, MASSACHUSETTS:** Large Quantity Late Model Trucks: Pickups, Service, Bucket & Derrick, Construction Equipment, Aerials and Forklifts.
47. **PARKERSBURG, WEST VIRGINIA:** Very Large, Late Model Construction & Utility Equipment Auction. Construction & Utility Equipment, Accessories, Trucks, Trailers from Dirt Job Completion.
48. **SAN DIEGO, CALIFORNIA:** Rental Returns Auction. 1 Major Rental Fleet of Construction, Utility Equipment, Aerial Lifts, Support & Attachments.
49. **MONTREAL, CANADA:** Rental Returns of Cat, Komatsu, John Deere Construction Equipment, Trucks and Trailers.
50. **SCRANTON, PENNSYLVANIA:** Rental Returns of Construction & Utility Equipment, Plus Beautiful Piece of Real Estate with Large Building.

MAIN OFFICE

315.633.2944 • 315.633.2872 • 315.633.9544
EVENINGS: (315) 637-8912, FAX: (315) 633-8010

BRANCH OFFICES

ATLANTA, GA	770.537.7386	NASHVILLE, TN	615.922.5197
BRATTLEBORO, VT	802.490.7894	NEW LONDON, CT	860.924.7735
CHICAGO, IL	312.724.5474	OKLAHOMA CITY, OK	405.438.3188
COLUMBUS, OH	614.254.5596	PARKERSBURG, WV	304.699.3050
DALLAS, TX	972.725.7761	RACINE, WI	262.886.2778
DENVER, CO	720.277.0263	ST. LOUIS, MO	314.570.4127
DES MOINES, IA	515.414.2868	TAMPA, FL	813.777.3273
FORT WORTH, TX	817.807.2761	WASHINGTON, DC	202.888.6003
HARRISBURG, PA	717.836.0919	MONTREAL, QC	579.490.5966
HOUSTON, TX	832.450.3910	OTTAWA, ON	579.490.5966
LAS VEGAS, NV	702.475.4992	QUEBEC CITY, QC	579.490.5966
MOBILE, AL	251.510.1538		

FOLLOW US:  

FINANCING AVAILABLE FOR PRE-APPROVED PURCHASERS: You must have prior written approval!

PATRIOT FINANCIAL LLC makes low-rate business financing and equipment leasing easy! We're dedicated to providing corporate and small businesses financial solutions to you, so you can grow your company. For Immediate or pre-auction approval please call Customer Service at 866-633-6003 or you may apply online with our secure site at www.patriotfinancialllc.com.

SMART BUSINESS CREDIT Smart Business Credit is one of the most experienced equipment leasing and finance companies in the industry, to provide financing for our customers. For instant credit approvals, contact Customer Service at 800-798-8862. Also available is a secure online application at www.Smartbusinesscredit.com.

SALES TAX: All sales are subject to sales tax.

SALES TAX EXEMPTIONS: Buyers with a VALID exemption certificate are not required to pay sales tax for equipment and miscellaneous, but MUST present a copy of their certificate at time of registration at EACH SALE.

EXPORTERS: If you take possession of your purchase in the United States, you must pay sales tax. You must provide the following in order not to be charged: Bill of Lading - All export purchases must be removed by a trucking company. The trucking company will provide a Bill of Lading with the purchases listed.

NOTE: No items will be released without this document or you may pay tax and be reimbursed once the Bill of Lading or a Dock Receipt is received.

MOTOR VEHICLES AND TRAILER EXEMPTIONS: Specific for each state. Please call office for exemption details.



344 S. WARREN STREET, SUITE 201
SYRACUSE, NY 13202

PRESORTED
FIRST CLASS MAIL
U.S. POSTAGE
PAID
SYRACUSE, NY
PERMIT No. 291

All information contained in this brochure was derived from sources believed to be correct, but not guaranteed. We shall not be held liable for any typographical errors or inaccuracies in the content of this brochure. All announcements made day of sale supercede any printed material.



PLEASE SCAN
QR CODE
FOR UP-TO-DATE
CALENDAR AND
EQUIPMENT LISTS

HOUSTON, TEXAS

OPENS: SATURDAY, SEPTEMBER 2ND AT 10:00 AM
CLOSES: TUESDAY, SEPTEMBER 12TH AT 1:00 PM

****TIMED AUCTION****

BANKRUPTCY AUCTION

BRH-GARVER CONSTRUCTION, LLC

CONSTRUCTION EQUIPMENT OF ALL KINDS, CAT, KOMATSU AND MORE



ASHTABULA, OHIO

****ONSITE-LIVE & TIMED AUCTION****

LIVE: WEDNESDAY, SEPTEMBER 13TH AT 9:30 AM

LIVE: THURSDAY, SEPTEMBER 14TH AT 9:30 AM

OPENS: FRIDAY, SEPTEMBER 1ST AT 12:00 PM

CLOSES: FRIDAY, SEPTEMBER 15TH AT 12:00 AM

LATE MODEL AGGREGATE, CONSTRUCTION & RECYCLING EQUIPMENT AUCTION

KANECT RECYCLING

AGGREGATE, CONSTRUCTION & RECYCLING EQUIPMENT, ALL TYPES OF TRUCKS: ROLLOFF, DUMP, SERVICE & PICKUP, VARIOUS TRAILERS, VERY LARGE AMOUNT OF STEEL PLATES, SUPPORT AND ACCESSORIES



AUSTIN, TEXAS

WEDNESDAY, SEPTEMBER 20TH AT 10:00 AM



****ONSITE-LIVE AUCTION****
2 AUCTIONS - 1 DAY



1- CHANGE OF OPERATIONS AUCTION - MCCAR TRUCKING

2- TOTAL DISPOSITION AUCTION - TIKI TEXAS LOGISTICS

COMPLETE SPREAD (36) LATE MODEL FREIGHTLINER, WESTERN STAR 7-AXLE SUPER DUMP TRUCKS, (8) 2023 FREIGHTLINER 0 TO 10,000 MILES, MAJORITY 2020-2022 ALL VERY LOW MILES IN TIP-TOP CONDITION, ALL SELL WITH EXTENDED WARRANTY



BUSHNELL, FLORIDA

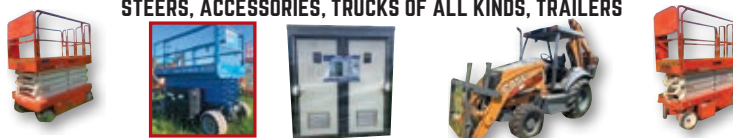
OPENS: FRIDAY, SEPTEMBER 15TH AT 9:30 AM

CLOSES: FRIDAY, SEPTEMBER 29TH AT 9:30 AM

****TIMED AUCTION****

PART 2 OF ACQUISITION OF - AHERN RENTALS
EXTRA LARGE LATE MODEL RENTAL CONSTRUCTION EQUIPMENT - UNITED RENTALS - AHERN RENTALS

LATE MODEL CONSTRUCTION, UTILITY EQUIPMENT, AERIALS, FORKLIFTS, SKID STEERS, ACCESSORIES, TRUCKS OF ALL KINDS, TRAILERS



315.633.2944

lyonauction.com

lyonauctionlive.com

lyonmexico.com