



# LIQUIDATION

## FOUNDRY & SUPPORT EQUIPMENT

### AVAILABLE FOR IMMEDIATE SALE

Orderly Liquidation Sale of All Remaining Foundry Related Items Located at

## SIVYER STEEL CASTINGS FOUNDRY

225 33RD STREET, BETTENDORF, IOWA 52722

2013



ATLAS MDL. 300MH MATERIAL HANDLER



ZENAR 63' SPAN 20/10 T. CLASS E HOT METAL CRANE

2022



BEAVERMATIC 12'W. X 12'L. X 8'H. GAS FIRED CAR BOTTOM FURNACE

2 AVAILABLE



TENOVA ARC FURNACE CONTROL



ELGIN MDL. PELICAN SERIES SE STREET SWEEPER



TINIUS OLSEN TENSILE TESTER



DAKE 300 T. HYDRAULIC STRAIGHTENING PRESS



WHEELABRATOR SUPER 72" "TUMBLAST" SHOTBLASTING MACHINE



JOHN DEERE ARTICULATED MDL. 444J HIGH LIFT FRONT END LOADER

See Inside for Details

Contact Robert Brundage at (713) 691-4401 for Pricing and Availability.

Sale Conducted By:

## PLANT & MACHINERY INC.

AUCTIONEERS • APPRAISERS • LIQUIDATORS • REAL ESTATE

1304 Langham Creek Drive, Suite 454, Houston, Texas 77084

PHONE: (713) 691-4401

FAX: (713) 672-7905

E-MAIL: [pmi@pmi-auction.com](mailto:pmi@pmi-auction.com)  
WEBSITE: [www.pmi-auction.com](http://www.pmi-auction.com)

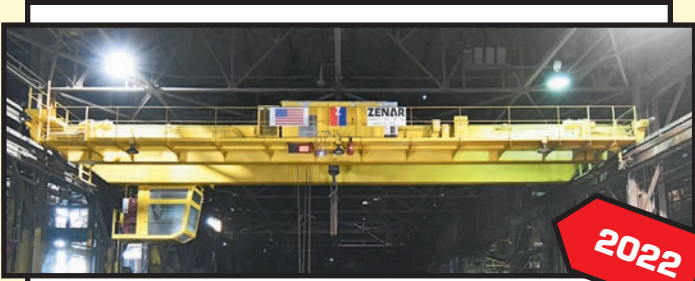
In Conjunction With:





Orderly Liquidation Sale of All Remaining Foundry Related Items Located at  
**SIVYER STEEL CASTINGS FOUNDRY**  
 225 33RD STREET, BETTENDORF, IOWA 52722

**AVAILABLE FOR IMMEDIATE SALE**



**2022**

**OVERHEAD BRIDGE CRANES**

**ZENAR 20/10 T. X 63'-2-1/4" SPAN FOUNDRY RATED TOP RUNNING DOUBLE GIRDER**, new 2022, Class E rated, cab/radio controls, 20 T. cap. main hoist, 10 T. cap. aux. hoist, 63'-2-1/4" span, 30' lift ht., digital crane scale w/read-out, full-length service platform, S/N 8914 (orig. cost: \$732,000.00).

**ZENAR 20 T. X 63'-2-1/4" SPAN FOUNDRY TOP RUNNING DOUBLE GIRDER**, new 2014, Class E rated, cab/radio controls, 20 T. cap. main hoist, 63'-2-1/4" span, 30' lift ht., full-length service platform, S/N 8565.

**ZENAR 15 T. X 55' (EST.) TOP RUNNING DOUBLE GIRDER CRANE**, 55' approx. span, cab/radio controls, S/N 4880.



**MOLDING SYSTEMS**

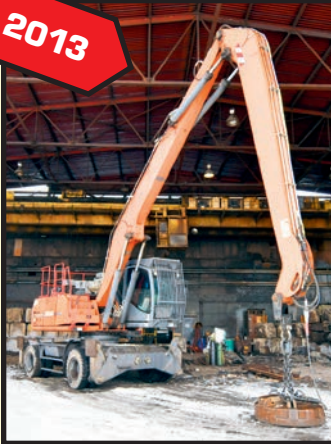
**KLOSTER VERSA-MULL TYPE III DOUBLE ARTICULATED MIXER**, 2,000-lb. per minute cap., operator's pulpit w/joystick controls, pwr. rotation primary and both secondary arms, 8'-6" discharge ht., 14' primary arm reach, 5' secondary arm reach, 24'-3" max. reach, 50 HP, Alfaset resin system, Kloster 60 TPM sand heater/cooler/classifier, (2) large rectangular compaction tables, S/N 8097-VM3-2000, system installed 2009.

**TINKER OMEGA ARTICULATED MIXER MDL. TOM1200**, 1200-lb. per minute cap., Next Gen 2 PLC controls, pwr. primary and secondary arm rotation, Alfaset resin system, feed hopper, pneumatic transporter, (2) Kloster 45 TPH sand heater/cooler/classifiers, vibratory compaction tbl., H. D. roller conveyor molding line, 90 deg. turn unit, Kloster boiler and dust collector, system installed 2010.

**KLOSTER VERSA-MULL TYPE II ARTICULATED MIXER**, 1,000-lb. per minute cap., pwr. primary arm rotation, 7'-3" discharge ht., 11'-8" primary arm reach, 15'-8" total reach, Alfaset resin system, feed hopper, Palmer additive system, Kloster 60 TPH sand heater/cooler/classifier, S/N MS-7428-VN2-1000, installed 2011.



**2013**



**MATERIAL HANDLER W/MAGNET**

**ATLAS MDL. 300MH**, new 2013, diesel, wheeled, 2,000-lb. cap., outriggers, dual solid tires on front and rear, H.O.M.: 9,040, S/N 301266. Equipped w/Walker Mdl. 4505H 45" dia. magnet, S/N 14D53.

**FRONT END LOADER**

**JOHN DEERE ARTICULATED MDL. 444J HIGH LIFT**, S/N DW444JH612883.

**STREET SWEEPER**

**ELGIN MDL. PELICAN SERIES SE**, 3-wheel mechanical boom sweeper w/ isolation mounted cab.



**MOLD SYSTEM SUPPORT EQUIPMENT**

**KLOSTER TILT-FRAME 2-STATION MOLD SPRAY COATING SYSTEM**, large cap., w/(2) coating pump/reservoir systems, catch pan, hyd. system.

**OVER 1,000 STEEL FLASKS**, from 24" x 27" up to 140" x 140" dimensions, and hts. from 12" to 48", round, square and rectangular shapes.

**QUIPTEC FLASKLESS MOLD MANIPULATORS**, 10,000-lb. cap. unit Mdl. OSR10K-06, S/N 453995.



**UNUSED**



### SAND SYSTEMS & SUPPORT EQUIPMENT

**GENERAL KINEMATICS 18' X 14' SHAKEOUT DECK**, new 2013, never installed, two-mass design, approx. 60 T. cap.

**GUDGEON THERMIFIRE SAND HEATER/COOLER/CLASSIFIER MDL. RES-A026**, new 2010, S/N 1179.

**GENERAL KINEMATICS VIBRA-MILL LUMP BREAKER**, programable controller, S/N N.A.

**PLUS: SEVERAL MACAWBER AND WHIRL-AIR FLOW SAND TRANSPORTERS W/ALLEN BRADLEY PROGRAMMABLE CONTROLLER; (3) LARGE MODULAR CONSTRUCTION SAND BINS; ERIEZ ELECTROMAGNET MDL. MC2SE7330, 33.1-amp, 115 v., S/N 291022; (2) HI-VAC ELECTRIC POWERED SAND VACUUM SYSTEMS**, one unit rebuilt 2022, w/dump hoppers and hoses.

### CAR-BOTTOM HEAT TREAT FURNACES

**BEAVERMATIC CAR-BOTTOM FURNACE MDL. 12X8X12DGCBF**, new 2012, 12'W. x 12'L. x 8'H. interior dimensions, 72,000-lb. car weight cap., 1,850 deg. max. temp. 350 deg. min. temp., ceramic wool lining, pwr. car, Maxon Mdl. 300SMA11-A11-B21A0 shut-off valves, Dungs combustion controls, (10) total burners, S/N 1011-175/8.

**BEAVERMATIC CAR-BOTTOM FURNACE MDL. 7X14X7DGCBF**, 7'W. x 14'L. x 7'H. interior dimensions, 30,000-lb. car weight cap., 1,850 deg. max. temp. 500 deg. min. temp., ceramic wool lining, pwr. car, (this furnace is currently needing a relining), S/N 40153/8.



**2 AVAILABLE**

**AVAILABLE FOR IMMEDIATE SALE**



### SHOT BLASTING EQUIPMENT

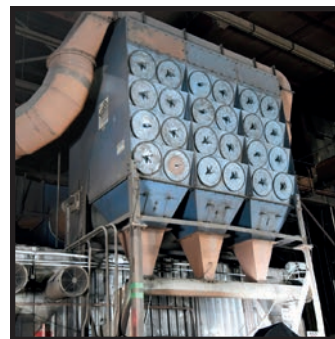
**WHEELABRATOR SUPER 70 "TUMBLAST" SHOTBLASTING MACHINE**, 63" x 96" opening size, skip loader unit, 50 HP direct drive 24" dia. wheel, Wheelabrator shaker style dust collector, S/N A56540.

**WHEELABRATOR TABLE BLAST MACHINE**, 72" dia. extra heavy cap. tbl., manganese steel lining, recirculating shot system, 50 HP direct drive shot wheel, 500-lb. shot hopper w/air feed system, Torit cartridge style dust collector, S/N N.A.

**FREE STANDING BLAST ROOM**, new 2019, approx. 15'W. x 20'D. x 15'H., H.D. rail car, winch system, unitized panel construction, recirculating media system, dust collection system, Axxiom 10 cu. ft. blast pot w/shot filtration system.

### MELT SHOP

**(3) WHITING 9' DIAMETER HYDRO-ARC MELTING FURNACES**, approx. 8 T. cap., hyd. tilt drive, Pennsylvania 4,000 KVA type OW transformer, 13,200 v. primary, recently retrofitted w/Tenova Mdl. LPV4043 servo electrode control system, auto. tap changer, auto. vacuum breaker, Nidec variable frequency drives, several new copper lead sets, several spare furnace roofs, quantity of new electrodes, ductwork and fume/dust collector system. **PLUS: (2) GAS FIRED LADLE PRE-HEAT SYSTEMS; (2) 10 T. CAP. LADLE HANDLERS; (8) 10 T. CAP. BOTTOM POUR LADLES; (2) BOTTOM-DROP CLAM SHELL SCRAP BUCKETS; LARGE QTY. SLAG POTS; WALKER 54" CRANE MAGNET; (3) CARDOX FIRE SUPPRESSION SYSTEMS.**







**STRAIGHTNING PRESS**  
DAKE 300 T. CAP. HYDRAULIC STRAIGHTENING PRESS.

**PATTERN SHOP**  
COMPLETE PATTERN SHOP INCL.: DELTA ROCKWELL VERTICAL BANDSAW; WALKER TURNER RADIAL DRILL; RIDGID COMPOUND MITER SAW; STENCIL MACHINES; WALKER TURNER VERTICAL BANDSAW; SPINDLE SANDERS; DELTA TABLE SAW; JOINTER; 14" DELTA PLANNER; BEVER VERTICAL TURRET MILL; SCROLL SAW; TILT FRAME VERTICAL BANDSAW; MARVEL NO. 8MK1, S/N 82174.

**MAGNETIC PARTICLE INSPECTION**  
MAGNAFLUX MDL. CSV-20, 20,000 max. output amps FWDC, remote control stand, 5 gal. spray pot w/agitator, spray head, (2) 24" x 48" copper plate material stands, S/N 623432-01; SEVERAL MORE MAGNAFLUX MAGNETIC PARTICLE INSPECTION MACHINES AVAILABLE.

**ELECTRICAL SWITCHGEAR**  
HUGE ASSORTMENT OF TRANSFORMERS, CIRCUIT BREAKERS, MOTOR CONTROL CENTERS, AND RELATED ELECTRICAL GEAR AND CABLING SERVING UP TO 13,200 V. POWER SYSTEMS. All electrical systems w/this facility are for sale. A single line electrical diagram is available upon request.

# LIQUIDATION

**CALL TODAY! ALL ITEMS SUBJECT TO PRIOR SALE**  
Contact Robert Brundage at (713) 691-4401 for Pricing and Availability.

Orderly Liquidation Sale of All Remaining Foundry Related Items Located at **225 33RD STREET, BETTENDORF, IOWA 52722**



**METALLURGICAL LAB & SMALL TOOLS**  
LECO TCH600 ELEMENTAL ANALYZER; APPLIED RESEARCH SPECTROMETER MDL. 3460, 9-elements, S/N 2144; WATGATE TECHNOLOGIES STRUCTURIX NDT-U X-RAY FILM DEVELOPER new 2022; TINIUS OLSEN TENSILE TESTER, hyd. drive, computer read-out; TINIUS OLSEN MDL. 84 CHARPY IMPACT TESTER; AMETEK STEEL TESTING MACHINES INC.; BRINELL TESTING MACHINE; WILSON MDL. 5JRB ROCKWELL TYPE HARDNESS TESTER, S/N 1510; HITACHI-SEIKI TSL15 CNC LATHE, Siesco 21L CNC control, 6" 3-jaw chuck; INDEX VERTICAL TURRET MILL; THERMOLINE OVEN; HEAVY DUTY ELECTRIC FURNACE, 1,850 deg.; HEAVY DUTY FURNACE MDL. HD10187, 2,000 deg. F, S/N 81212; BAILEIGH ENGINE LATHE MDL. PL1236DRO; ABELL HOWE 1/2 T. CAP. JIB CRANE; HYD-MECH MITERING HORIZ. BANDSAW MDL. S20, S/N 20195057; KALAMAZOO 6" BELT SANDER; CARBORUNDUM ABRASIVE CUT-OFF SAW.



**COOLING CIRCUIT EQUIPMENT**  
EVAPCO COOLING TOWER MDL. AT19-2H8, qty. of (4) 7-1/2 HP vertical pumps, butterfly valves, S/N 21P118711; EVAPCO COOLING TOWER MDL. AT-243, 2,400 gal. per minute; TRANE 300 T. CHILLER SYSTEM.



**AIR COMPRESSOR SYSTEMS**  
(3) SULLAIR 200 HP WATER COOLED ROTARY SCREW AIR COMPRESSORS (two units recently rebuilt); ATLAS COPCO MDL. FD-1750 REFRIGERATED AIR DRYER, new 2019, 1,750 CFM cap.

Sale Conducted By: **PLANT & MACHINERY INC.**  
AUCTIONEERS • APPRAISERS • LIQUIDATORS • REAL ESTATE  
1304 Langham Creek Drive, Suite 454, Houston, Texas 77084  
PHONE: (713) 691-4401 FAX: (713) 672-7905  
E-MAIL: [pmi@pmi-auction.com](mailto:pmi@pmi-auction.com)  
WEBSITE: [www.pmi-auction.com](http://www.pmi-auction.com)

In Conjunction With: **Federal Equipment Company**