



LIVE WEBCAST AUCTION

ONE DAY: MULTIPLE FABRICATION FACILITIES

LARGE CAP. 1.38" X 118" PLATE ROLL; 1,000 T. X 16' PRESS BRAKE; (10) MANIPULATORS; FIT-UP LINE; TANK TURNING ROLLS;
UNUSED 50 KW DIESEL GENERATOR; UNUSED HELIPORT/AIRPORT LIGHTING PACKAGE; MORE!



ALLSTEEL 1,000 T. CAP. HYDRAULIC PRESS BRAKE



MAZAK VTC-250D/50 VERTICAL MACHINING CENTER

**THURSDAY, JUNE 25 AT 10:00 A.M. CDT
LIVE ONLINE WEBCAST (NO ONSITE BIDDING)**

FOR BIDDING AT THIS AUCTION: YOU MUST REGISTER TO BID IN ADVANCED FOR ONLINE BIDDING AT THIS AUCTION. Go to www.pmi-auction.com and click on BidSpotter or proxibid on our calendar page for this auction sale.

INSPECTION: Varies by Location. See Each Location for Details

18% BUYER'S PREMIUM WILL APPLY

Read Partial Terms & Conditions on Page 6



PRESTON EASTIN 12' X 12' CAP. WELDING MANIPULATOR



INGERSOLL RAND NIRVANA R55N-A 100 HP ROTARY SCREW AIR COMPRESSOR



TOYOTA 8,000-LB. BASE CAP. MDL. 02-5FG35 LPG FORKLIFT



LINCOLN PRECISION TIG 275

Sale Conducted By:

PLANT & MACHINERY INC.

AUCTIONEERS • APPRAISERS • LIQUIDATORS • REAL ESTATE

Ron Moore, TX Lic. #7314

E-MAIL: pmi@pmi-auction.com • WEBSITE: www.pmi-auction.com

Headquarters:

1304 Langham Creek Drive, Suite 454,
Houston, Texas 77084

PHONE: (713) 691-4401

FAX: (713) 672-7905



AUCTION

**THURSDAY, JUNE 25 AT 10:00 A.M. CDT
LIVE ONLINE WEBCAST (NO ONSITE BIDDING)**

FOR BIDDING AT THIS AUCTION: YOU MUST REGISTER TO BID IN ADVANCED FOR ONLINE BIDDING AT THIS AUCTION. Go to www.pmi-auciton.com and click on BidSpotter or proxibid on our calendar page for this auction sale.

LOCATION 1

Surplus to the Ongoing Operations of
**NORTH SHORE SUPPLY
COMPANY, INC.**

**12953 MARKET STREET,
HOUSTON, TEXAS 77015**

INSPECTION: By Appointment Only.
Contact Scott Lambert (832) 221-8626.
Hard hats and safety glasses required.



HYDRAULIC PRESS BRAKE

ALLSTEEL MDL. 1000X16, 1,000 T. cap., 16'L., 125 HP, 22" open ht., 14" stroke, 25" throat depth, S/N 10024.



HYDRAULIC PLATE ROLL

PULLMAX MDL. PV7-H, 1.38" x 118" cap., S/N 3470.

PLASMA CUTTING SYSTEM

MESSER MDL. PLATEMASTER, new 2010, Hypertherm HyPerformance plasma, Mdl. HPR260XD plasma pwr. source, filtration system, beveling head, (table not included), S/N PMR12-10-5386.



ONE DAY: MULTIPLE FABRICATION FACILITIES

**LARGE CAP. 1.38" X 118" PLATE ROLL; 1,000 T. X 16' PRESS BRAKE;
(10) MANIPULATORS; FIT-UP LINE; TANK TURNING ROLLS; UNUSED 50 KW
DIESEL GENERATOR; UNUSED HELIPORT/AIRPORT LIGHTING PACKAGE; MORE!**



AUCTION

**THURSDAY, JUNE 25
AT 10:00 A.M. CDT
LIVE ONLINE WEBCAST (NO ONSITE BIDDING)**



ONE DAY: MULTIPLE FABRICATION FACILITIES

**LARGE CAP. 1.38" X 118" PLATE ROLL; 1,000 T. X 16' PRESS BRAKE;
(10) MANIPULATORS; FIT-UP LINE; TANK TURNING ROLLS; UNUSED 50 KW
DIESEL GENERATOR; UNUSED HELIPORT/AIRPORT LIGHTING PACKAGE; MORE!**

LOCATION 2

Surplus to the Ongoing Operations of
**GREENS BAYOU PIPE MILL
STORAGE FACILITY**
5311 CLINTON DRIVE,
HOUSTON, TEXAS 77020

INSPECTION: Tuesday & Wednesday,
June 23 & 24, 9:00 A.M. to 4:00 P.M.

FIT-UP LINE

WELDWARE MDL. CASI150, consisting of: (2) idlers w/vertical pwr. adjustment, 900 mm–3,200 mm dia. range, 150 metric T. rotation cap., 75 metric T. loading cap., 100 mm–1,000 mm per minute rotation spd., (1) CASI-150 pwr. turning roll w/100 HP, 900–3,200 dia., (1) CASI-150 idler roll.

TRACK MOUNTED SUB ARC MANIPULATORS

AMET 13' X 13' CAP. MDL. CBMH-4X4-TCW, new 2013, Amet control, flux head, associated track, S/N P13024.

PRESTON EASTIN 12' X 12' CAP. MDL. MA122-HD, new 2012, Lincoln Max 10 control, Weld Engineering flux head, associated track, approx. 40', S/N 1212HD-275.

PRESTON EASTIN 12' X 12' CAP. MDL. MA1212-HD, new 2010, Lincoln Max 10 control, Weld Engineering flux head, associated track, approx. 40', S/N 1212HD-198.

SUB ARC MANIPULATORS

WELDWARE MDL. WWM-1414GDC, 14' x 14', new 2011, S/N 11513; **WELDWARE MDL. WWM-1414GDC**, 14' x 14', new 2012, S/N 12514; **WELDWARE MDL. WWM-1414GDC**, 14' x 14', new 2011, S/N 11512; **PRESTON EASTIN MDL. MA1212**, approx. 12' x 12', (no control); **PRESTON EASTIN MDL. MA1212**, approx. 12' x 12', upright only (no arm included), S/N MC1212HD29; **SUB ARC MANIPULATORS W/POWER TRAVEL**; (2) **WELDWARE**, approx. 12' x 12', w/Lincoln controls; (2) **PRESTON EASTIN MDL. MA1212**, approx. 12' x 12', w/Lincoln controls; **PROFAX**, approx. 6' x 6', w/(1) Lincoln NA-4 control and (1) Lincoln NA-3N control, sub-arc hopper, flux hopper.

TANK TURNING ROLL SETS

(3) **ROLLING CUSTOM TANK TURNING ROLL PLATFORMS W/BUILT IN TANK TURNING ROLLS**, approx. 12' x 12'.

WIDE SELECTION OF HEAVY DUTY TANK TURNING ROLL SETS

UP TO 400 T. KOIKE ARONSON, INC.; RANSOME – SEE CATALOG FOR DETAILS.



FOR BIDDING AT THIS AUCTION:

YOU MUST REGISTER TO BID IN ADVANCED FOR ONLINE BIDDING AT THIS AUCTION. Go to www.pmi-auction.com and click on **BidSpotter** or **proxibid** on our calendar page for this auction sale.



LOCATION 2 CONTINUED

WELDING POWER SOURCES

(6) LINCOLN IDEALARC AC1200; (4) LINCOLN AC/DC 1000SD POWER WAVES; APPROX. (17) LINCOLN IDEALARC DC 1000 AND DC 650 PRO; (2) LINCOLN S350 POWER WAVE; (7) MILLER DIMENSION 652; (2) RED-D-ARC DC 1000 POWER SOURCES.

FLUX RECOVERY SYSTEMS

(2) WELD ENGINEERING; (1) WELD ENGINEERING FLUX HEAD, w/control.

FORKLIFTS

YALE 8,000-LB. BASE CAP. MDL. GLC080VXN, new 2020, LPG, 94" 3-stage mast, 201" lift ht., side shift, cushion tires, 48" forks, S/N G818V04499U.

YALE 8,000-LB. BASE CAP. MDL. GLC080VXN, new 2018, LPG, 94" 3-stage mast, 201" lift ht., side shift, cushion tires, 48" forks, S/N G818V03406S.

YALE 6,000-LB. BASE CAP. MDL. GLC060VXN, new 2019, LPG, 90" 3-stage mast, 200" lift ht., side shift, cushion tires, 48" forks, S/N C910V10749T.



Surplus to the Ongoing Operations of
GREENS BAYOU PIPE MILL STORAGE FACILITY
5311 CLINTON DRIVE,
HOUSTON,
TEXAS 77020

INSPECTION: Tuesday & Wednesday, June 23 & 24, 9:00 A.M. to 4:00 P.M.

HELIPORT CONSTRUCTION PROJECT CANCELLED!

Items moved for convenience of sale to Clinton Drive location.

UNUSED 50 kW DIESEL STANDBY GENERATOR

GENERAC MDL. SD050 50 kW W/4.5 LITER IVECO DIESEL ENGINE, unused, w/Generac Mdl. TX611 Automatic Transfer Switch.

UNUSED HELIPORT/AIRPORT LIGHTING PACKAGE

INCLUDES ALL OF THE FOLLOWING:

(2) FAA L-806 SIZE 1 INTERNALLY LIGHTED 120 V. WIND CONES, uses an internal lamp assembly to light the inside of an 18" x 8" windsock, powered by a standard 120 v. AC utility line.

(6) FAA-CERTIFIED FLIGHT LIGHT INC. LOW-INTENSITY L-810 STEADY-BURNING RED OBSTRUCTION LIGHTS.

(16) OMNIDIRECTIONAL FLIGHT LIGHT INC. MDL. L852E YELLOW INSET LIGHTS, in-pavement airfield fixtures.

(16) 30/45 WATT 6.6A/6.6A 60HZ L-830 ISOLATION TRANSFORMERS, designated as an FAA Type L-830-1 power component.

(16) FAA L-823 CLASS B TYPE 1 STYLE 3 AND STYLE 10 PRIMARY CONNECTOR KITS, an airfield component used to field-terminate L-824 primary airfield lighting cable.

(16) FAA L-868 SIZE B (12" DIA.) 3/4" THICK FLANGE RINGS, heavy-duty load-bearing pavement component used to adjust the final elevation and alignment of an in-pavement airfield lighting fixture.

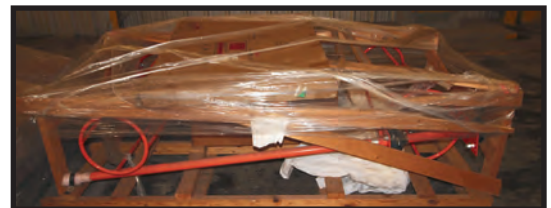
(1) MODEL L-854 FAA TYPE RADIO RECEIVER DECODER, Air-To-Ground, Type 1, Style A, ETL Certified to: FAA AC 150/5345-49D. The L-854 FM radio receiver/decoder is designed to provide pilots direct, unassisted air-to-ground control of airfield lighting systems.

(1) MODEL FAA L-829 FERRORESONANT 4 kW 6.6A 5-STEP 208 V./60HZ CONSTANT CURRENT REGULATOR (CCR), is a specialized airfield power supply engineered to regulate electrical current flowing to runway and taxiway lighting series loops. The L-829 specification differentiates this unit from standard L-828 models by adding integrated monitoring and diagnostics circuitry. This configuration tracks real-time loop parameters, detects isolated transformer open circuits, and monitors the number of failed lamps on the circuit.

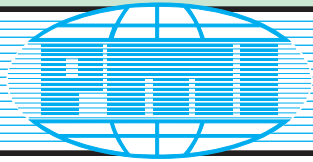
(2) FLOOR FLANGES, 2" NPT 6" OD cast iron.



UNUSED



PARTIAL VIEW OF UNUSED AIRPORT LIGHTING AND ILLUMINATED WIND CONES



PMI AUCTION

**THURSDAY, JUNE 25
AT 10:00 A.M. CDT
LIVE ONLINE WEBCAST (NO ONSITE BIDDING)**

FOR BIDDING AT THIS AUCTION: YOU MUST REGISTER TO BID IN ADVANCED FOR ONLINE BIDDING AT THIS AUCTION.
Go to www.pmi-auction.com and click on **BidSpotter** or **proxibid** on our calendar page for this auction sale.



LOCATION 3

Surplus to the Ongoing Operations of
FABCORP
6951 W. LITTLE YORK ROAD,
HOUSTON, TEXAS 77040
INSPECTION: By Appointment Only.
Contact Jeff Niemann (832) 309-4087.

WELDING POWER SOURCES

LINCOLN CV-305, S/N U1070114677, w/wire feeder LF72; LINCOLN PRECISION TIG 275, S/N U1020200896; LINCOLN PRECISION TIG 275, S/N U1070303404.

MILLER SYNCROWAVE 250DX, S/N MC250169L; MILLER SYNCROWAVE 250.

(2) FRONIUS MDL. TRANSPULS SYNERGIC 4000, S/N 27504091, S/N 27465679.

(4) OTC MDL. DP-400 DIGITAL PULSE WELDERS.
OTC MDL. TURBO PULSE 350 DIGITAL PULSE WELDER.



VERTICAL MACHINING CENTER

MAZAK MDL. VTC-250D VERTICAL MACHINING CENTER, new 2007, Mazatrol 840MM control, 50 taper, 82.7" x 25" tbl. size, 69.3" X, 25" Y, 25.6" Z-axis travels, S/N 192576.5E.

AUTOMATIC HORIZONTAL BANDSAW

HYDMECH MDL. S20A, 13" X 18" cap., horizontal pivot, S/N 8A0807222.

WIRE FEEDERS & TORCHES

(2) FRONIUS MDL. ROBACTA DRIVE CMT-PAP W, VR1550 4R/F++ wire feeder.



BLAST CABINET

ZERO MDL. BNP55-7.

HEATERS

(3) GLOBAL INDUSTRIAL, 15,000 watt, Salamander.

(27) FORCED AIR, 27,000 BTU kerosene heaters.

ROTARY SCREW AIR COMPRESSORS

INGERSOLL RAND NIRVANA MDL. R55N-A, 100 HP VFD 3-phase, 480 v., 5,397 H.O.M., S/N NK3282U17361.

INGERSOLL RAND MDL. SSR-EP75, 75 HP, direct drive, 3-phase, 480 v., 23,301 H.O.M., S/N F14173U95116.

INGERSOLL RAND MDL. UP6-50PE-125, 50 HP, belt drive, 3-phase, 480 v., 37,892 H.O.M., S/N PG3559U07207.

INGERSOLL RAND MDL. SSR-EPE50, direct drive, 3-phase, 480 v., 28,854 H.O.M., S/N F17476U97023.

GARDNER DENVER MDL. EBM99M, direct drive, 3-phase, 460 v., 41,263 H.O.M., S/N S376631.

INGERSOLL RAND MDL. SSR-EP50SE, 50 HP.

REFRIGERATED AIR DRYER.

GARDNER DENVER, 500 CFM, 3-phase, 220 v.

CABLE SET

YASKAWA MANIP.13.4M.

LOCATION 3 CONTINUED



QC EQUIPMENT

ANALOG HEIGHT GAUGES; DIGITAL HEIGHT GAUGES; 40" DIGIMATIC CALIPERS; MORE.

FORKLIFTS

HYSTER 12,000-LB. CAP. MDL. S120XLS FORKLIFT, 2-stage mast, 22,143 H.O.M., S/N D004D3B41U.

TOYOTA 8,000-LB. CAP. MDL. 02-5FG35 FORKLIFT, 6' forks, 18,849 H.O.M., S/N 5FG35-20472.

TOYOTA 8,000-LB. CAP. MDL. 7FGU35 FORKLIFT, 3-stage mast, 19,242 H.O.M., S/N 62879.

CATERPILLAR 5,000-LB. CAP. MDL. GC25K FORKLIFT, 3-stage mast, 15,040 H.O.M., S/N AT82C-04843.



THURSDAY, JUNE 25 AT 10:00 A.M. CDT LIVE ONLINE WEBCAST (NO ONSITE BIDDING)

ONLINE REGISTRATION

Register to bid at

BidSpotter or **proxibid**

1. Use the [link](#) to Bidspotter.com or Proxibid.com on PMI's website calendar. [www.pmi-auction.com](#) DO IT NOW!

2. This auction may require a Cash, or credit card, or debit card, 100% refundable deposit. If by credit or debit card, it can be added through the Bidspotter.com fully secure and PCI compliant registration process and will be assessed a 100% refundable \$3,000 (US Bidder) or a \$10,000 (Foreign Bidder) deposit in order to be approved to bid online with this auction. Cash deposits can be made by wire transfer. **DON'T WAIT.** If you are unsuccessful in the auction, the refund of your credit/debit card deposit will occur shortly after the auction ends. Cash deposits will be expedited as well.

If you need assistance, don't hesitate to call (713) 691-4401.

ALL BIDS ARE SUBJECT TO AN 18% BUYER'S PREMIUM.

PARTIAL TERMS & CONDITIONS:

An 18% Buyer's Premium Will Apply.

Everything will be sold to the highest bidder or bidders for cash in accordance with the auctioneer's Customary Terms of Sale, copies of which will be posted on our website.

ALL PAYMENTS MUST BE MADE BY CASHIER'S CHECK, WIRE TRANSFER OR COMPANY CHECK WITH BANK LETTER GUARANTEEING PAYMENT TO PLANT & MACHINERY INC.

Here is an example of what your letter should be: "Customer Name" is a customer of this bank. This bank will guarantee unqualified payment to PMI on the account listed herein up to the amount of \$ _____. This letter is good until July 27, 2026.

In default of payment of bills in full within the time therein specified, the Auctioneer in addition to all other remedies allowed by law, may retain all monies received as deposit or otherwise, as liquidated damages. All items must be removed by the time announced at the start of the sale.

Lots not paid for and/or removed within the time allowed may be resold at public or private sale without further notice, and any deficiency, together with all expenses and charge of resale, will be charged to the defaulting purchaser.

The buyer acknowledges that he or an agent has inspected all of the assets upon which he will be bidding and/or does purchase.

Buyer agrees to accept assets purchased "AS IS," WITH "ALL FAULTS" AND "WITH REMOVAL AT BUYER'S RISK AND EXPENSE." THE AUCTIONEER EXPRESSLY DISCLAIMS ON THE PART OF THE

AUCTIONEER AS AGENT AND THE SELLER, ANY WARRANTY AS TO FITNESS OR USABILITY OF ALL THE ASSETS, AND THE BUYER EXPRESSLY WAIVES ANY CLAIM IN RESPECT TO ANY POSSIBLE FUTURE USE OF ANY ASSET PURCHASED FOR ANY PURPOSE WHATSOEVER.

The buyer does hereby assume and does agree to indemnify and hold the auctioneer harmless from any future claim which shall pertain to the fitness or use of that asset as being purchased. Riggers, movers, electricians and buyers performing work at the Auction Site must provide PMI with evidence of insurance. The insurance coverage must be at a level acceptable to PMI and to the seller. PMI reserves the right to withdraw items, alter the order of the sale, accept bids from the seller, and group lots as it may deem appropriate. This auction may include consignment items.

Although all information has been obtained from sources deemed reliable, the auctioneer and seller make no warranty or guarantee, expressed or implied, as to the accuracy of the information herein contained, or contained in our catalog. It is for this reason that buyers should avail themselves of the opportunity to make inspection prior to the auction. Although it is not likely, auction sales are subject to cancellation or postponement. Kindly contact auctioneer prior to attendance.

These terms and conditions may be modified or supplemented by language in the catalog available at the sale site or by announcement at the start of the sale. Bidders should be attentive to those announcements and to the catalog language.